

Global constraints from RHIC and LHC on transport properties of QCD fluids in CUJET/CIBJET framework*

Shuzhe Shi(施舒哲)^{1,1)} Jinfeng Liao(廖劲峰)^{1,2)} Miklos Gyulassy^{2,3,4,3)}

¹ Physics Department and Center for Exploration of Energy and Matter, Indiana University, 2401 N Milo B. Sampson Lane, Bloomington, IN 47408, USA

² Nuclear Science Division, Lawrence Berkeley National Laboratory, Berkeley, CA 94720, USA

³ Pupin Lab MS-5202, Department of Physics, Columbia University, New York, NY 10027, USA

⁴ Institute of Particle Physics and Key Laboratory of Quark & Lepton Physics (MOE), Central China Normal University, Wuhan, 430079, China

Abstract: We report results of a comprehensive global χ^2 analysis of nuclear collision data from RHIC (0.2 ATeV), LHC1 (2.76 ATeV), and recent LHC2 (5.02 ATeV) energies using the updated CUJET framework. The framework consistently combines viscous hydrodynamic fields predicted by VISHNU2+1 (validated with soft $p_T < 2$ GeV bulk observables) and the DGLV theory of jet elastic and inelastic energy loss generalized to QGP fluids with an sQGP color structure, including effective semi-QGP color electric quark and gluon as well as emergent color magnetic monopole degrees of freedom constrained by lattice QCD data. We vary the two control parameters of the model (the maximum value of the running QCD coupling, α_c , and the ratio c_m of color magnetic to electric screening scales) and calculate the global $\chi^2(\alpha_c, c_m)$ compared with available jet fragment observables (R_{AA}, v_2). A global $\chi^2 < 2$ minimum is found with $\alpha_c \approx 0.9 \pm 0.1$ and $c_m \approx 0.25 \pm 0.03$. Using CIBJET, the event-by-event (ebe) generalization of the CUJET framework, we show that ebe fluctuations in the initial conditions do not significantly alter our conclusions (except for v_3). An important theoretical advantage of the CUJET and CIBJET frameworks is not only its global χ^2 consistency with jet fragment observables at RHIC and LHC and with non-perturbative lattice QCD data, but also its internal consistency of the constrained jet transport coefficient, $\hat{q}(E, T)/T^3$, with the near-perfect fluid viscosity to entropy ratio ($\eta/s \sim T^3/\hat{q} \sim 0.1 - 0.2$) property of QCD fluids near T_c needed to account for the low $p_T < 2$ GeV flow observables. Predictions for future tests at LHC with 5.44 ATeV Xe + Xe and 5.02 ATeV Pb + Pb are also presented.

Keywords: jet quenching, quark-gluon plasma, relativistic heavy-ion collisions, heavy flavor physics

PACS: 12.38.Aw, 12.38.Mh **DOI:** 10.1088/1674-1137/43/4/044101

1 Introduction

High energy quark and gluon jets, initially generated in rare perturbative QCD processes, lose energy and diffuse transversely along their paths due to interactions with microscopic constituents in the hot quark-gluon plasma created by heavy ion collisions at the Relativistic Heavy Ion Collider (RHIC) and the Large Hadron Collider (LHC). Such hard ($p_T > 10$ GeV) processes provide

an independent probe of the evolution history of the soft QCD matter ($p_T < 2$ GeV) produced in such collisions. Recent high-precision data from LHC Pb + Pb collisions on jet quenching and azimuthal asymmetry observables over wide kinematics and centrality ranges provide an opportunity to quantitatively constrain and differentiate competing models of jet-medium interactions, as well as varied assumptions of the chromo-electric and magnetic field structure of the bulk QCD “perfect fluids” produced in ultra-relativistic nuclear collisions.

Received 4 December 2018, Published online 1 March 2019

* Supported by the National Science Foundation (PHY-1352368), IOPP of CCNU Wuhan China, the computations in this study were performed on IU's Big Red II clusters, supported in part by the Lilly Endowment, Inc., through its support for the Indiana University Pervasive Technology Institute, and in part by the Indiana METACyt Initiative. The Indiana METACyt Initiative at IU was also supported in part by the Lilly Endowment, Inc.

1) E-mail: shishuz@indiana.edu

2) E-mail: liaojj@indiana.edu

3) E-mail: mg150@columbia.edu



Content from this work may be used under the terms of the Creative Commons Attribution 3.0 licence. Any further distribution of this work must maintain attribution to the author(s) and the title of the work, journal citation and DOI. Article funded by SCOAP3 and published under licence by Chinese Physical Society and the Institute of High Energy Physics of the Chinese Academy of Sciences and the Institute of Modern Physics of the Chinese Academy of Sciences and IOP Publishing Ltd

Given (i) a detailed microscopy theory of jet medium interactions (e.g. DGLV [1-9], HT [10-13], AMY [14-16], or AdS [17, 18]), (ii) a detailed model of bulk initial conditions (e.g. Glauber [19], TRENTO [20], or CGC [21]), and (iii) a long wavelength collective transport theory of the bulk QCD matter, such as relativistic viscous hydrodynamics (e.g. VISHNU [22], vUSPHydro [23-25], or MUSIC [26, 27]), the observed attenuation pattern of hard jet observables and their correlations with soft bulk collective flow observables can help differentiate competing dynamical models of high energy A + A collisions. In Refs. [28, 29] we developed the CUJET3.0 framework that combines the DGLV theory of jet energy loss coupled with nearly “perfect QCD fluids”, described by the viscous hydrodynamics theory (and simulated via VISHNU [30]) to constrain the color degrees of freedom.

The simplest class of hard observables in a specific centrality class, C , is the p_T and relative azimuthal angle dependence of the nuclear modification factor R_{AA}^f for final state hadrons (with flavor species denoted by f), which is decomposed into Fourier harmonics as:

$$R_{AA}^f(p_T, \phi; C; \sqrt{s}) = \frac{dN_{AA}^f(C)}{p_T dp_T d\phi} \frac{d\sigma_{pp}^f}{p_T dp_T d\phi} = R_{AA}^f(p_T; C; \sqrt{s}) \left[1 + 2 \sum_n \langle v_n^f(p_T; C; \sqrt{s}; \cos(n(\phi - \Psi_n))) \rangle_C \right] \quad (1)$$

where $T_{AA}(C)$ is the average number of binary nucleon-nucleon scattering per unit area in centrality class C . Typically, C is expressed as a percentage interval of the inelastic cross section, e.g. 10%–20% of the charged multiplicity per unit rapidity distribution. The p_T and ϕ depict the transverse momentum and the azimuthal angle of observed leading hadrons, respectively, relative to the bulk collective flow azimuthal harmonics. The experimental measurements of hard particle harmonics v_n^f are performed with respect to event-wise soft harmonics, and event-by-event fluctuations of the bulk initial condition may play an important role [31]. Within the CUJET3 framework, the influence of event-by-event fluctuations has been investigated with a generalized CIBJET (= ebeIC + VISHNU + DGLV) framework, with the results reported in Ref. [32]. The CIBJET results of R_{AA} , v_2 , and v_3 observables across a very wide range of p_T for 30%–40% centrality Pb + Pb collisions at 5.02 ATeV were shown in [32], and they are in excellent agreement with experimental data. In Fig. 1, we further present the CIBJET results of R_{AA} , v_2 , and v_3 for a different centrality of 20%–30%, which likewise show excellent agreement with experimental data and demonstrate the correct

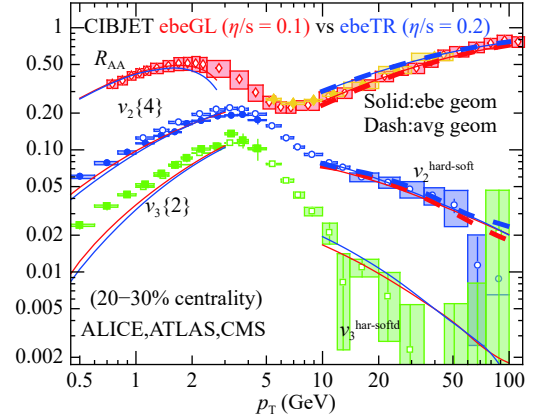


Fig. 1. (color online) Nuclear modification factor R_{AA} and second and third harmonic coefficients v_2 and v_3 of final hadron azimuthal distribution as functions of p_T for 20%–30% Pb + Pb collisions at 5.02 ATeV. Solid curves are obtained from event-by-event calculations, while dashed curves depict averaged smooth geometry. CIBJET results in both soft and hard regions, with either Monte-Carlo Glauber (red) or Trento (blue) initial conditions, are in excellent agreement with experimental data from ALICE, ATLAS, and CMS [33-37]. Similar CIBJET results for 30%–40% centrality, in excellent agreement with experimental data, were shown in [32].

centrality dependence of the CIBJET results. One conclusion found with CIBJET is that the p_T and centrality dependence of the elliptic $v_2^f(p_T, C)$ azimuthal harmonics shows quantitative consistency at a $\sim 10\%$ level between calculations with averaged smooth bulk geometry and those with fluctuating initial conditions. This conclusion is true for the varied centrality class and is in agreement with a similar consistency-check from the ebeIC + LBT + HT hard + soft framework in Refs. [13, 38], while being different from the ebeIC + vUSPHydro + BBMG framework in Ref. [31], which found a much larger sensitivity (factor ~ 2) of the hard elliptic harmonic to event-by-event fluctuations. The finding from CIBJET justifies the use of averaged smooth geometry in the CUJET3 framework, as we shall adopt in the present paper.

The prime motivation of this work is to conduct a comprehensive new global χ^2 analysis of nuclear collision data from RHIC (0.2 ATeV), LHC1 (2.76 ATeV), and recent LHC2 (5.02 ATeV) energies for high p_T light and heavy flavor hadrons. This analysis is performed with the updated CUJET3.1 framework to evaluate jet energy loss distributions in various models of the color structure of QCD fluids produced in heavy ion collisions. The CUJET3.1 is based on our previous CUJET3.0 framework [28, 29] and successfully addressed a few issues in CUJET3.0. A brief introduction to CUJET3.0 and a detailed discussion regarding the improvements in CUJET3.1 are included in the two appendices. We will

show that CUJET3.1 provides a non-perturbative solution to the long standing hard (R_{AA} and v_2) versus soft “perfect fluidity” puzzle. We further examine the crucial issue of consistency between soft and hard transport properties of the QCD fluid in this framework. Predictions for future tests at LHC with 5.44 ATeV Xe + Xe and 5.02 ATeV Pb + Pb will also be presented.

The organization of this paper is as follows. We perform the model parameter optimization in Section 2, based on the quantitative χ^2 analysis with a comprehensive set of experimental data for light hadrons. In Section 3, we show the successful CUJET3.1 description of available experimental data for light hadrons as well as the successful independent test with heavy flavor hadrons. The temperature dependence of the jet transport coefficient and the corresponding shear viscosity for the quark-gluon plasma, extracted from CUJET3.1, are presented in Section 5. CUJET3.1 predictions for ongoing experimental analysis are shown in Section 4. Finally, we summarize the paper in Section 6. A brief introduction of the CUJET3 framework, as well as the improvements made in CUJET3.1, are included in the two appendices.

2 Global χ^2 Analysis with CUJET3

As discussed in Appendix A, the CUJET3 framework is a quantification model solving jet energy loss in a hydrodynamics background, implementing DGLV jet energy loss from both inelastic and elastic scattering, and taking into account interactions with both chromo-electric and magnetic charges of the medium. There are two key parameters in the model. One is α_c (see also Eq. A4 in App. A):

$$\alpha_s(Q^2) = \frac{\alpha_c}{1 + \frac{9\alpha_c}{4\pi} \log(Q^2/T_c^2)},$$

which is the value of QCD running coupling at the non-perturbative scale $Q^2 = T_c^2$. It sensitively controls and positively influences the overall opaqueness of the hot medium. The other is c_m , defined via $\mu_M = c_m g(T)\mu$, (see also Eq. A4, A6, and A7 in App. A), which is the coefficient for magnetic screening mass in the medium and influences the contribution of the magnetic component to the jet energy loss. The increase of c_m leads to the enhancement of monopole mass, hence overall opaqueness. Magnetic mass scales with magnetic scale $g^2 T$, but its coefficient receives non-perturbative contributions and cannot be perturbatively calculated even at high temperature. Constrained by the lattice QCD calculation [39], the reasonable value of c_m varies in the range of $0.2 \lesssim c_m \lesssim 0.5$.

To systematically constrain these two key parameters, first we perform a quantitative χ^2 analysis and utilize central and semi-central high transverse momentum light hadron's R_{AA} and v_2 for all available data. We compare

the relative variance between theoretical expectation and experimental data, which is defined as the ratio of squared difference between experimental data points and corresponding CUJET3 expectation, to the quadratic sum of experimental statistic and systematic uncertainties for that data point:

$$\chi^2/\text{d.o.f.} = \sum_i \frac{(y_{\text{exp},i} - y_{\text{theo},i})^2}{\sum_s (\sigma_{s,i})^2} \bigg/ \sum_i 1, \quad (2)$$

where \sum_i runs over all experimental data point in the momentum range $8 \leq p_T \leq 50$ GeV/c, and \sum_s denotes summing over all sources of uncertainties, e.g. systematic and statistic uncertainties. We compute $\chi^2/\text{d.o.f.}$ for each of the following 12 data sets:

- 200 GeV Au-Au Collisions, 0%–10% Centrality Bin, $R_{AA}(\pi^0)$: PHENIX [40, 41];
- 200 GeV Au-Au Collisions, 0%–10% Centrality Bin, $v_2(\pi^0)$: PHENIX [41];
- 200 GeV Au-Au Collisions, 20%–30% Centrality Bin, $R_{AA}(\pi^0)$: PHENIX [40, 41];
- 200 GeV Au-Au Collisions, 20%–30% Centrality Bin, $v_2(\pi^0)$: PHENIX [41];
- 2.76 TeV Pb-Pb Collisions, 0%–10% Centrality Bin, $R_{AA}(h^\pm)$: ALICE [42];
- 2.76 TeV Pb-Pb Collisions, 0%–10% Centrality Bin, $v_2(h^\pm)$: ATLAS [43], CMS [44];
- 2.76 TeV Pb-Pb Collisions, 20%–30% Centrality Bin, $R_{AA}(h^\pm)$: ALICE [42];
- 2.76 TeV Pb-Pb Collisions, 20%–30% Centrality Bin, $v_2(h^\pm)$: ALICE [45], ATLAS [43], CMS [44];
- 5.02 TeV Pb-Pb Collisions, 0%–5% Centrality Bin, $R_{AA}(h^\pm)$: ATLAS-preliminary [34], CMS [35];
- 5.02 TeV Pb-Pb Collisions, 0%–5% Centrality Bin, $v_2(h^\pm)$: CMS [36];
- 5.02 TeV Pb-Pb Collisions, 10%–30% Centrality Bin, $R_{AA}(h^\pm)$: CMS [35];
- 5.02 TeV Pb-Pb Collisions, 20%–30% Centrality Bin, $v_2(h^\pm)$: CMS [36];

and finally obtain the overall $\chi^2/\text{d.o.f.}$ as the average over these data sets.

First of all, we perform the analysis in the “slow” quark-libration scheme (χ_T^L -scheme) for a wide range of parameter space: $0.5 \leq \alpha_c \leq 1.3$, $0.18 \leq c_m \leq 0.32$. As shown in Fig. 2, $\chi^2/\text{d.o.f.}$ with only R_{AA} data (left panel) or only v_2 data (middle panel) yields different tension values and favors different regions of parameter space. Taking all data together (right panel), we identify a data-selected optimal parameter set as ($\alpha_c = 0.9$, $c_m = 0.25$), with $\chi^2/\text{d.o.f.}$ close to unity, while the “uncertainty region” spanned by ($\alpha_c = 0.8$, $c_m = 0.22$) and ($\alpha_c = 1.0$, $c_m = 0.28$) with $a\chi^2/\text{d.o.f.}$ about two times the minimal value. Both the optimal parameter set and the “uncertainty region” re-

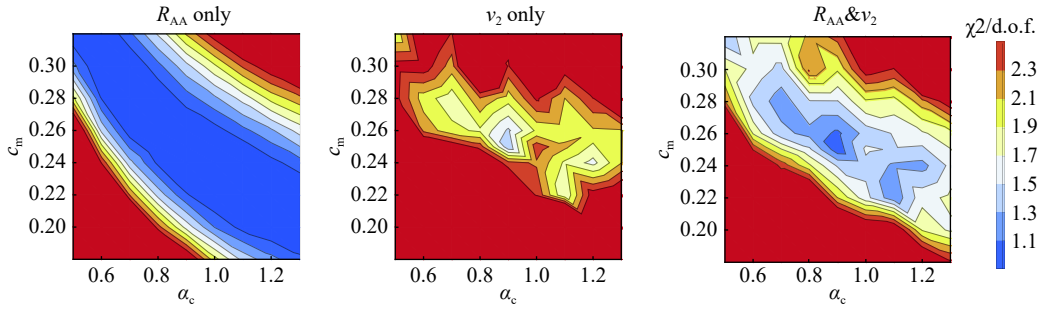


Fig. 2. (color online) $\chi^2/\text{d.o.f.}$ comparing χ_T^L -scheme CUJET3 results with RHIC and LHC data. Left: $\chi^2/\text{d.o.f.}$ for R_{AA} only. Middle: $\chi^2/\text{d.o.f.}$ for v_2 only. Right: $\chi^2/\text{d.o.f.}$ including both R_{AA} and v_2

main essentially unchanged if $\chi^2/\text{d.o.f.}$ is computed giving the same weight for each data point instead of each data set.

In order to test the need of the chromo-magnetic-monopole (cmm) degrees of freedom and to explore the potential influence of theoretical uncertainties of different quark liberation schemes, we perform the same χ^2 analysis with two other schemes: (a) the “fast” quark-liberation scheme (χ_T^u -scheme); (b) the weakly coupling QGP (wQGP) scheme equivalent to CUJET2.0 mode and as-

suming no cmm, i.e. taking $f_E = 1$, $f_M = 0$, and chromo-electric-components fraction $\chi_T = 1$, while the running coupling takes the Zakharov formula as in Eq. (A5).

By using these three schemes with their corresponding most optimal parameter set:

- (i) sQGMP χ_T^L -scheme: $\alpha_c = 0.9$, $c_m = 0.25$,
- (ii) sQGMP χ_T^u -scheme: $\alpha_c = 0.9$, $c_m = 0.34$,
- (iii) wQGP/CUJET2 scheme: $\alpha_{\text{max}} = 0.4$, (optimized by R_{AA})

we show in Fig. 3 their comparison with the above

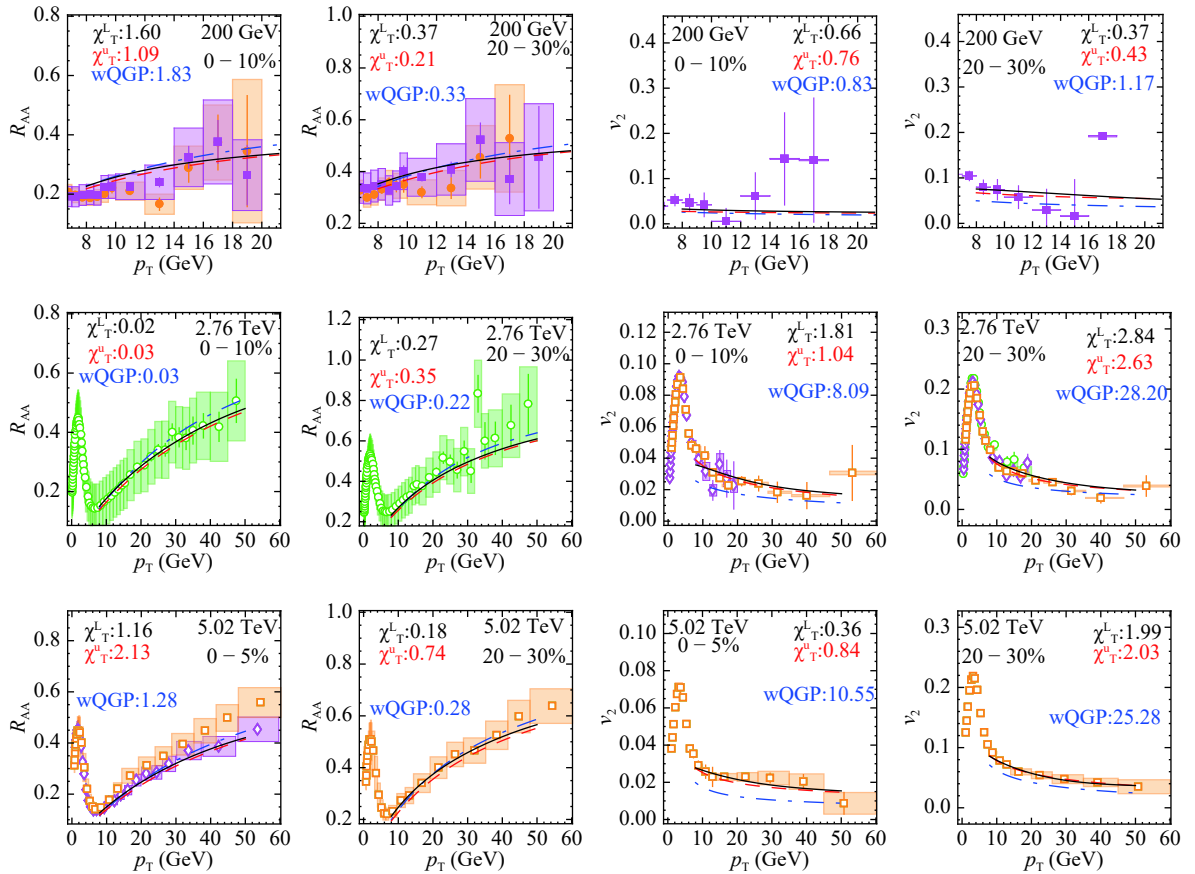


Fig. 3. (color online) CUJET theoretical expectation of light hadron R_{AA} and v_2 using three different schemes: sQGMP χ_T^L -scheme (black solid), sQGMP χ_T^u -scheme (red dashed), wQGP/CUJET2 scheme (blue dashed dotted). Corresponding $\chi^2/\text{d.o.f.}$ are shown, with respect to following experimental data: PHENIX 2008 (orange solid circle) [40], PHENIX 2012 (magenta solid square) [41]; ALICE (magenta open diamond) [42, 45], ATLAS (green open circle) [34, 43], CMS (orange open square) [35, 34, 44].

experimental data sets, including the quantitative value of $\chi^2/\text{d.o.f.}$ for each data set. While both sQGMP schemes (χ_T^L and χ_T^u) give similar jet quenching variables, the QGP scheme gives similar R_{AA} but less azimuthal anisotropy. In particular, one can see clearly from the quantitative value of their $\chi^2/\text{d.o.f.}$ that the theoretical expectations of both sQGMP schemes are in good consistency with the experimental data, and that of the QGP scheme, without cmm degree of freedom, differs significantly from the highly precise LHC v_2 measurements. The χ^2 analysis strongly supports the need of cmm degrees of freedom, but remains robust on the specific quark liberation scheme.

While we maintain the unification of the CUJET3 model by using the same (globally optimized) parameter set, it's worth mentioning that quantitative χ^2 analysis for a different data set, e.g. a different observable or different beam energy, flavors a different parameter regime, as shown in Table 1. When comparing to the R_{AA} results,

Table 1. Optimal parameter and corresponding $\chi^2/\text{d.o.f.}$ for different data sets in different schemes. Note that the sQGMP χ_T^u scheme is optimized by taking $\alpha_c \equiv 0.9$.

	sQGMP χ_T^L			sQGMP χ_T^u		wQGP	
	α_c	c_m	$\chi^2/\text{d.o.f.}$	c_m	$\chi^2/\text{d.o.f.}$	α_{\max}	$\chi^2/\text{d.o.f.}$
R_{AA}	0.9	0.24	0.57	0.31	0.60	0.4	0.67
v_2	0.9	0.25	1.34	0.34	1.28	1.0	2.34
200 GeV	1.2	0.28	0.40	0.40	0.42	0.6	0.61
2.76 TeV	0.9	0.24	1.15	0.34	1.01	1.0	2.07
5.02 TeV	0.7	0.28	0.76	0.34	1.43	1.0	8.61
All	0.9	0.25	0.97	0.34	1.02	0.7	3.47

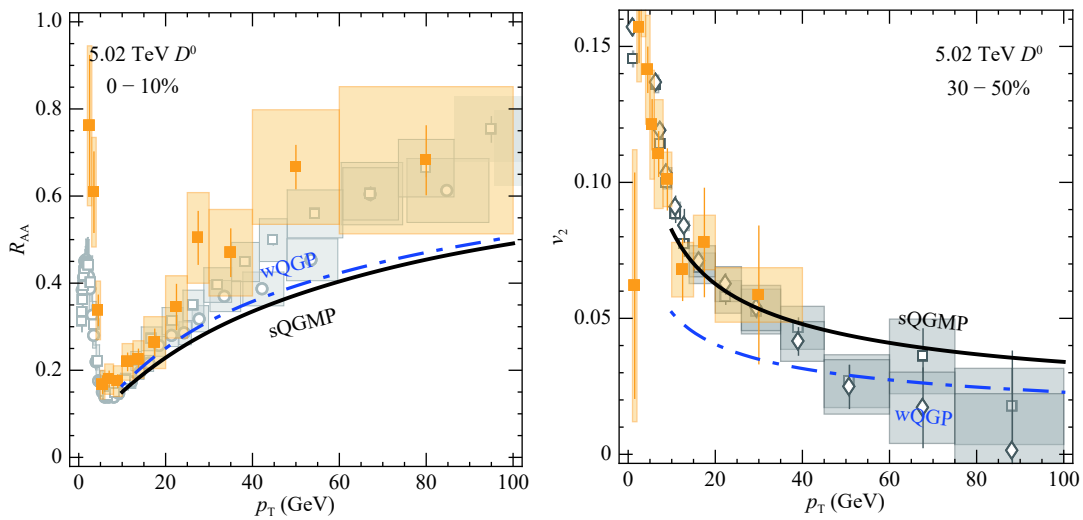


Fig. 4. (color online) CUJET theoretical expectation of D meson R_{AA} and v_2 using: sQGMP χ_T^L -scheme (black solid line), and wQGP/CUJET2 scheme (blue dashed-dotted line). Comparison with preliminary-CMS data (orange solid squares) [46, 47] is also shown. Corresponding R_{AA} and v_2 data for light hadrons [34-36] are depicted with gray symbols.

the azimuthal anisotropy measurement with more shrink uncertainties yields higher $\chi^2/\text{d.o.f.}$, whereas in CUJET3 models, the RHIC results flavor stronger coupling (larger α_c or c_m) than the LHC results. Meanwhile, the latter are more precise and provide better distinction of different models. Particularly in the case of 5.02 TeV data, the sQGMP schemes are explicitly more phenomenologically flavored than the wQGP scheme.

With the high statistics of 5.02 TeV Pb-Pb data, we further expect that highly precise jet quenching observables for heavy flavored hadrons, e.g. D meson, could serve as an independent probe to discriminate sQGMP versus wQGP models. As shown in Fig. 4, we find that sQGMP and wQGP models predict similar R_{AA} , while their significantly different predictions of v_2 require experimental data with higher accuracy and higher p_T to provide a decisive distinction.

3 Comparison with Experimental Data

With the systematic χ^2 analysis, we obtained the optimal region of CUJET3 parameters constrained by only light hadron R_{AA} and v_2 , for central and semi-central collisions. To provide a critical independent test of the model, we compute CUJET3 results for both light and heavy flavor hadrons, with all centrality ranges up to semi-peripheral collisions, and perform apple-to-apple comparisons with all available experimental data.

Starting from this section, in CUJET3 simulations we employed the χ_T^L -scheme assuming slow quark-libration, while keeping the theoretical uncertainties by taking the parameter region spanned by ($\alpha_c = 0.8$, $c_m = 0.22$) and ($\alpha_c = 1.0$, $c_m = 0.28$), which correspond to upper/lower bounds of R_{AA} and lower/upper bounds of v_2 , respectively.

3.1 Light Hadrons

First of all, in Figs. 5-10, we compare CUJET3.1 results for light hadron R_{AA} and v_2 , with all available data: PHENIX [40, 41] and STAR [48] measurements for 200 GeV Au-Au collisions; ALICE [42, 45], ATLAS [43, 49] and CMS [44, 50] results for 2.76 TeV Pb-Pb collisions; and ATLAS [34] and CMS [35, 36] data for 5.02 TeV Pb-Pb collisions. One can clearly see the excellent agreement for all centrality ranges at all mentioned collision energies. In particular, it is worth to emphasize that after the aforementioned correction, the current CUJET3.1 simulation framework is able to correctly reproduce the p_T and centrality dependence of both R_{AA} and v_2 .

We note that such a comprehensive data set covers a rich diversity of geometrical and thermal profiles of the

QCD Plasma. In different centrality bins at various colliding energies, the bulk backgrounds are significantly distinctive in lifetime, size, ellipticity, and temperature, and consequently, the path length of the jets, either direction averaging or depending, varies in a wide range. In Table 2, we show the quantitative comparison of the initial central temperature $T_{ini,center}$, initial ellipticity $e_{2,ini}$, and lifetime τ_{hydro} . The temperature, as well as the lifetime of such systems vary by a factor of ~ 2 , while the geometries change from nearly symmetric to those with an ellipticity ~ 0.4 . The success in explaining R_{AA} and v_2 from central to semi-peripheral data, at beam energies from 0.2 TeV to 5.02 TeV, indicates the success of the temperature and path dependence of the CUJET3 energy loss model.

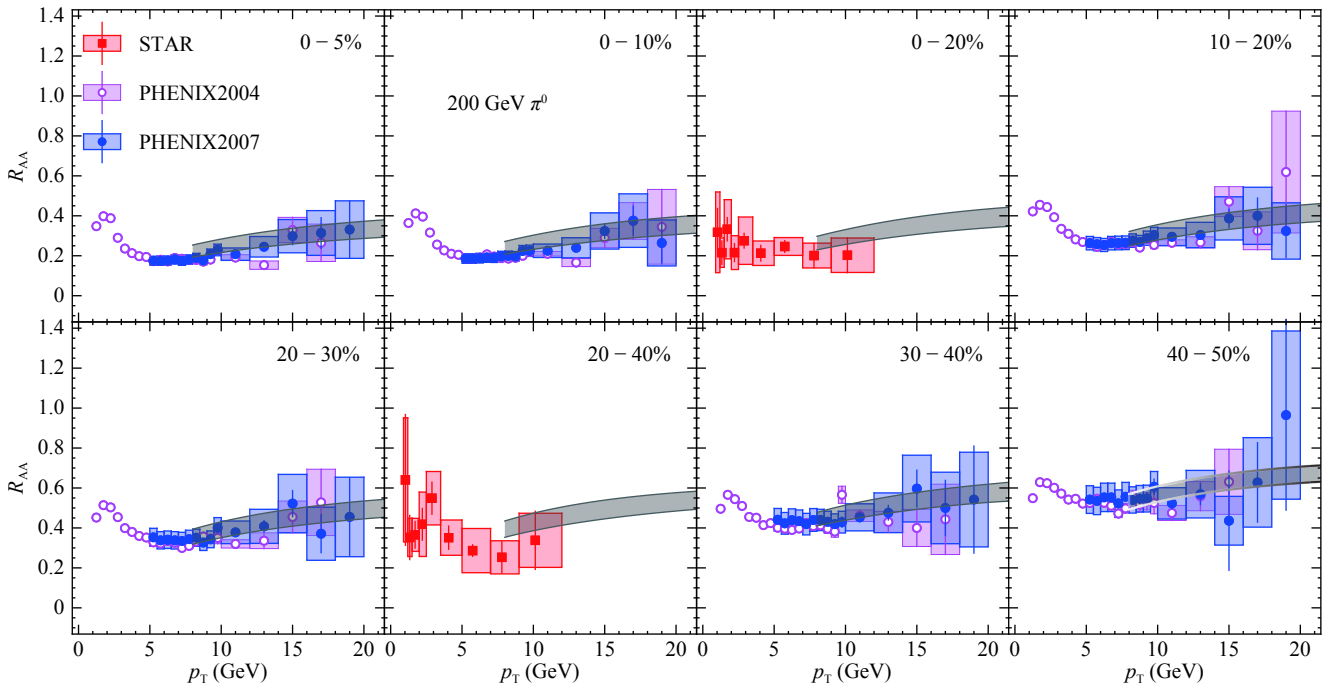


Fig. 5. (color online) Light hadron R_{AA} for 200 GeV Au-Au collisions in comparison with PHENIX [40, 41] and STAR [48] results. Magenta (blue) circles labeled PHENIX2004 (PHENIX2007) correspond to data published in Ref. [40] (Ref. [41]) analysis of the RHIC 2004 (2007) data set.

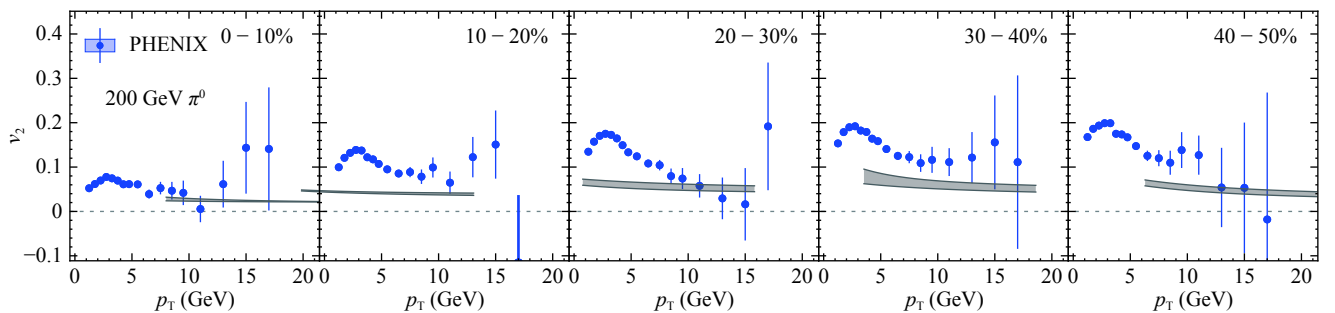


Fig. 6. (color online) Light hadron v_2 for 200 GeV Au-Au collisions in comparison with PHENIX data [41].

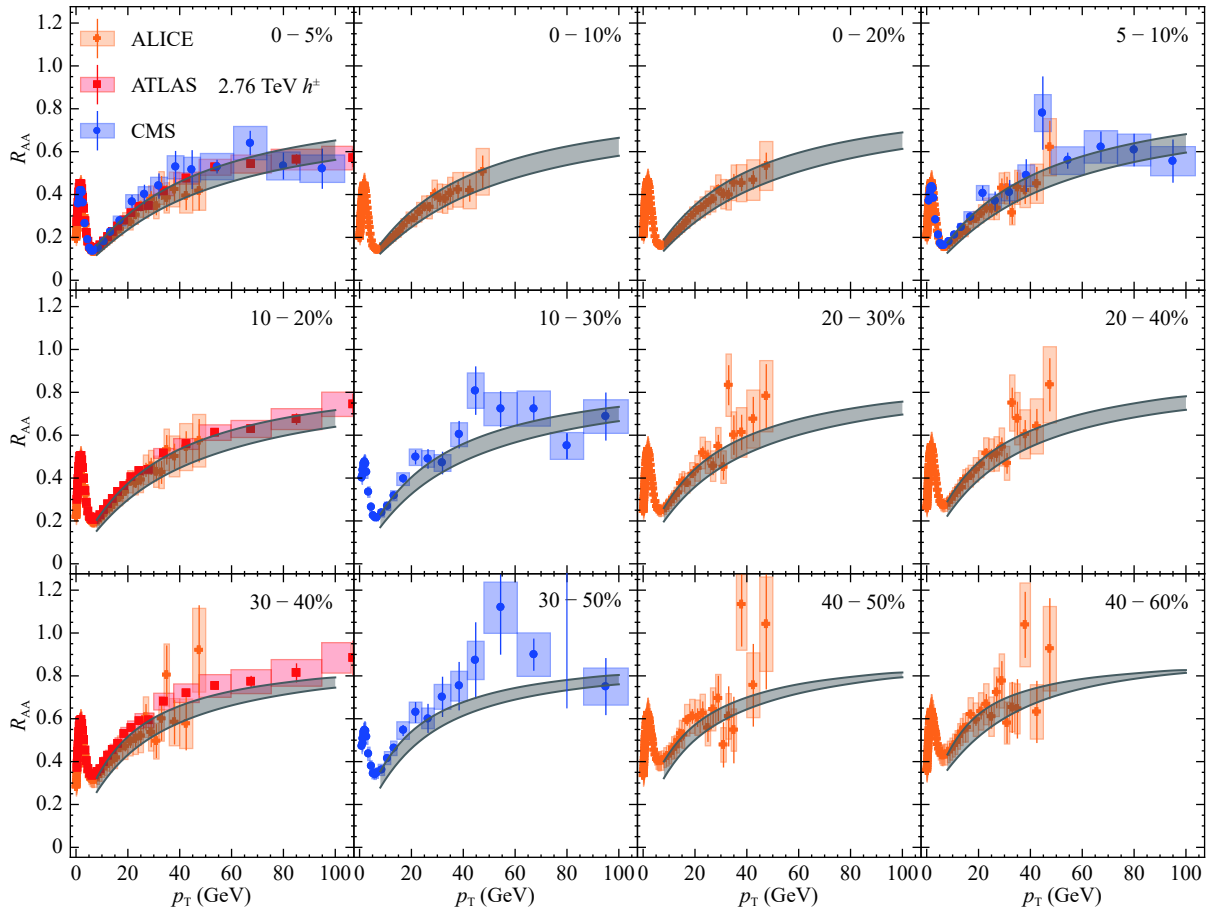


Fig. 7. (color online) Light hadron R_{AA} for 2.76 TeV Pb-Pb collisions in comparison with ALICE [42], ATLAS [49] and CMS [50] results.

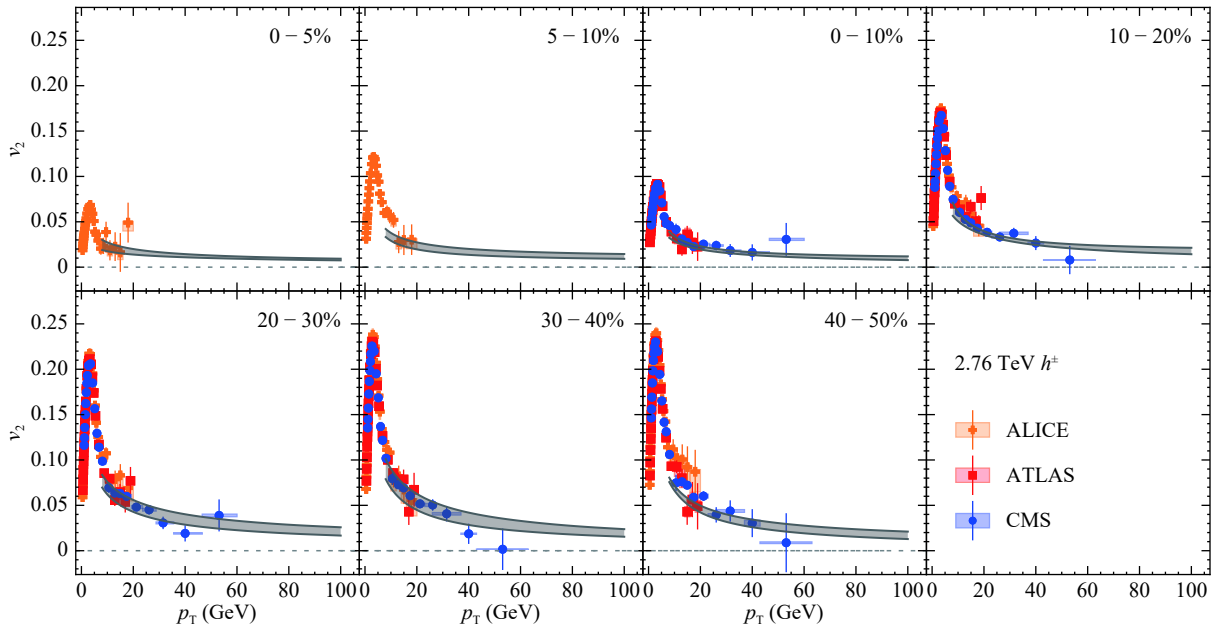


Fig. 8. (color online) Light hadron v_2 for 2.76 TeV Pb-Pb collisions in comparison with ALICE [45], ATLAS [43] and CMS [44] results.

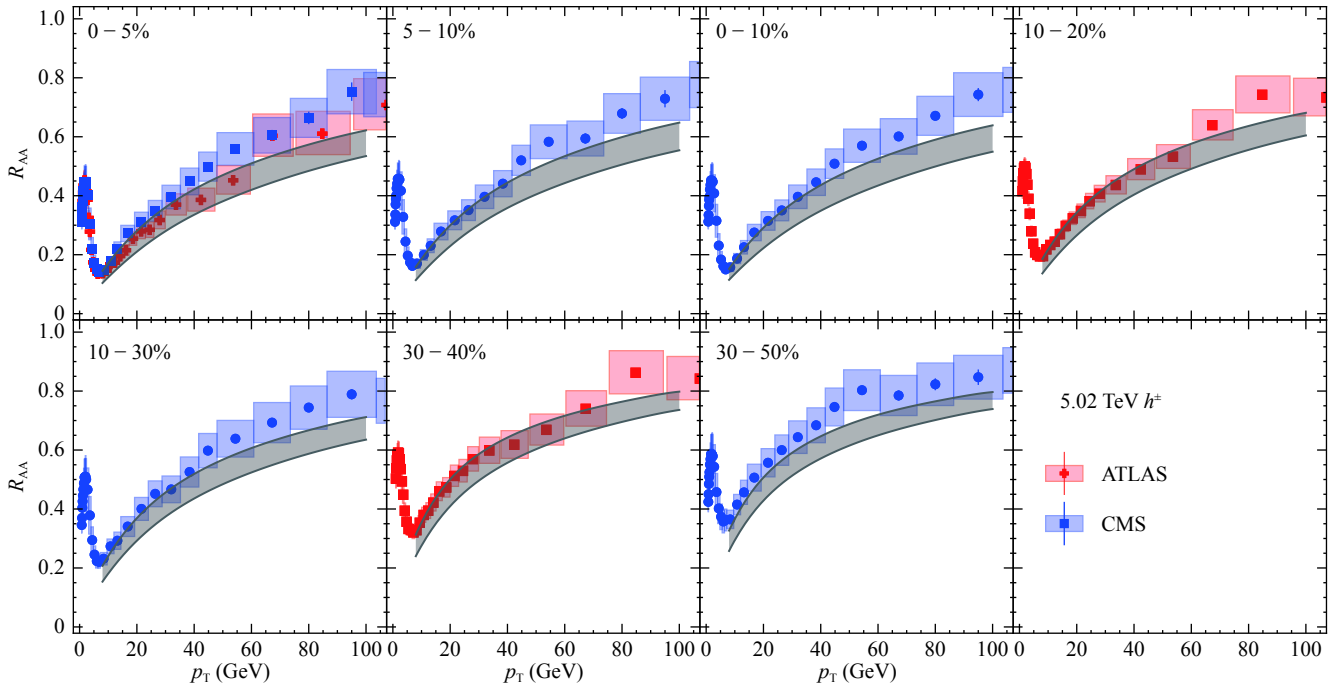


Fig. 9. (color online) Light hadron R_{AA} for 5.02 TeV Pb-Pb collisions in comparison with ATLAS [34] and CMS [35] results.

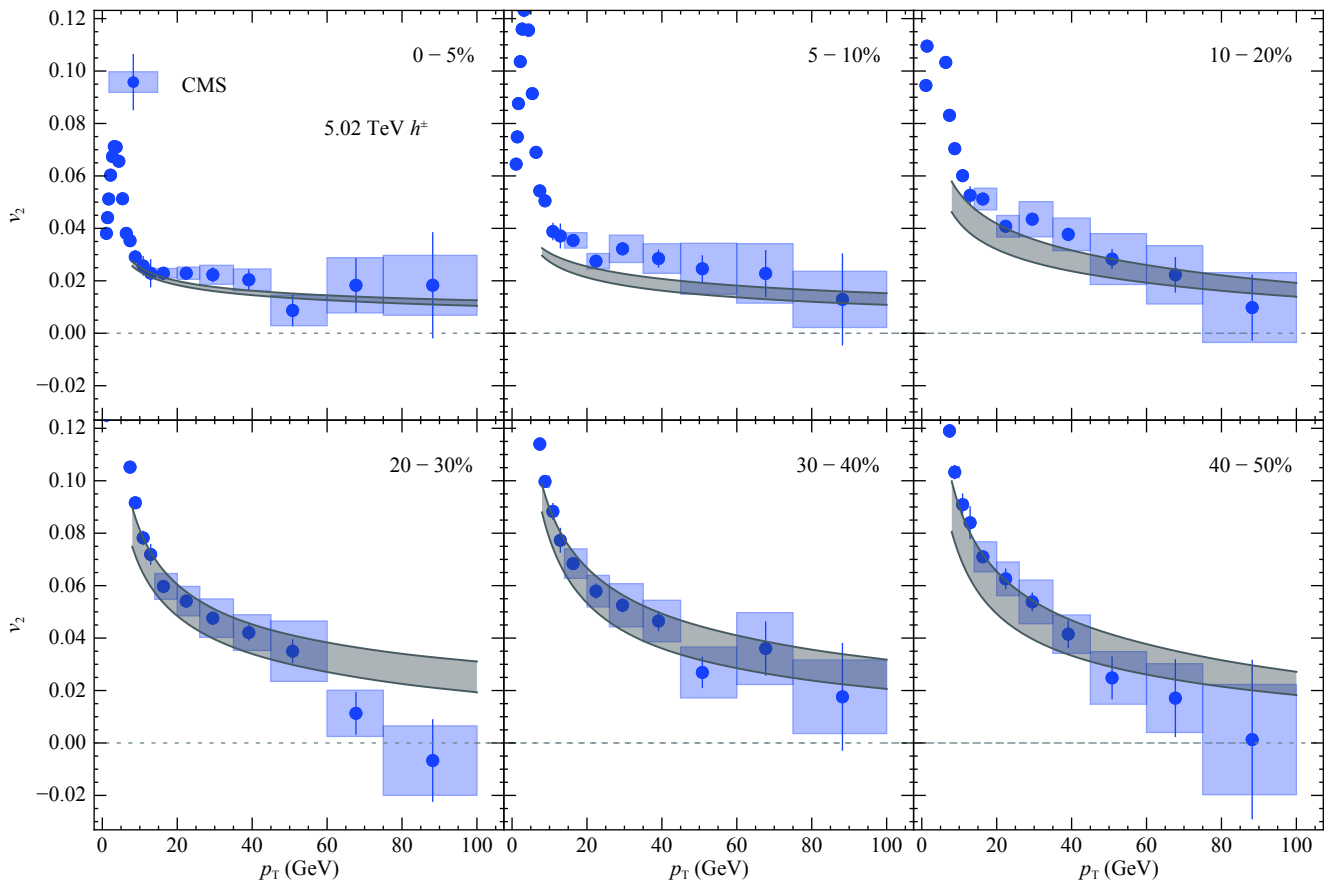


Fig. 10. (color online) Light hadron v_2 for 5.02 TeV Pb-Pb collisions in comparison with CMS data [36].

Table 2. Comparison of the initial central temperature $T_{\text{ini,center}}$, initial ellipticity $\epsilon_{2,\text{ini}}$, and lifetime τ_{hydro} in different collision conditions. The initial ellipticity is defined with respect to entropy density s at hydro starting time $\tau = 0.6$ fm, $\epsilon_{2,\text{ini}} \equiv -[\int s p^2 \cos(2\phi) dxdy] / [\int s p^2 dxdy]$.

	200 GeV		2.76 TeV		5.02 TeV	
	0%–5%	40%–50%	0%–5%	40%–50%	0%–5%	40%–50%
$T_{\text{ini,center}}(\text{MeV})$	358	294	465	366	506	397
$\epsilon_{2,\text{ini}}$	0.07	0.44	0.07	0.46	0.07	0.45
$\tau_{\text{hydro}}(\text{fm}/c)$	9.4	5.2	11.4	6.3	11.8	6.7

3.2 Heavy flavor measurements

Having successfully described high- p_T R_{AA} and v_2 data for light hadrons, we now perform further independent tests of the energy-loss mechanism using heavy flavor data [51]. In Figures 11-19, we compare CUJET3 results for the energy-loss observables of prompt D & B mesons as well as electrons or muons from heavy flavor decay, with all available data: PHENIX [52], STAR [53] measurements for 200 GeV Au-Au collisions; ALICE [54-58], CMS [59] data for 2.76 TeV Pb-Pb collisions;

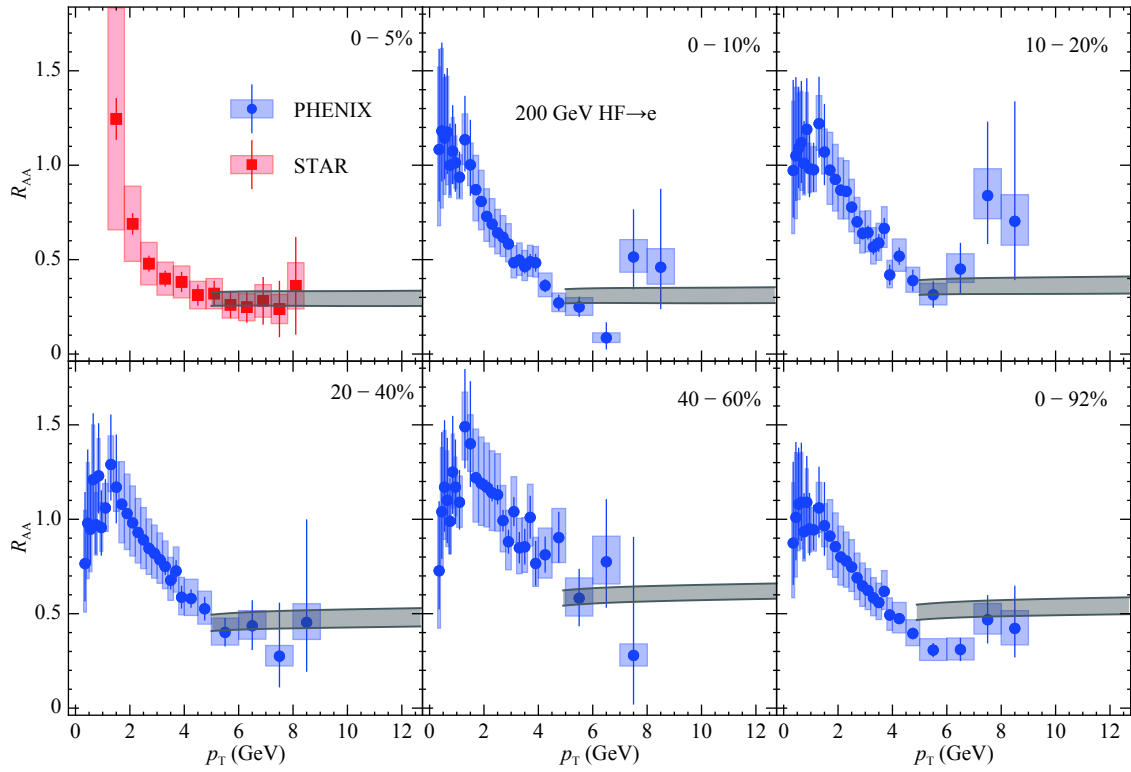


Fig. 11. (color online) Heavy flavor decayed electron R_{AA} for 200 GeV Au-Au collisions in comparison with PHENIX [52] and STAR [53] results.

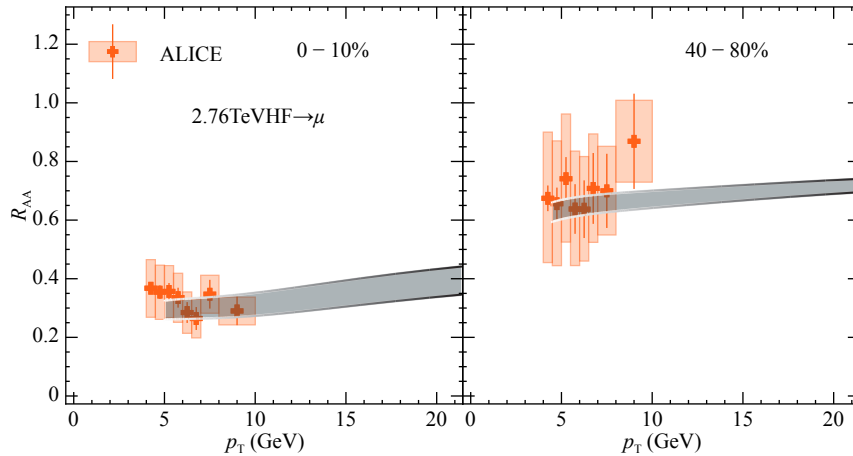


Fig. 12. (color online) Heavy flavor decayed muon R_{AA} for 2.76 TeV Pb-Pb collisions in comparison with ALICE data [58].

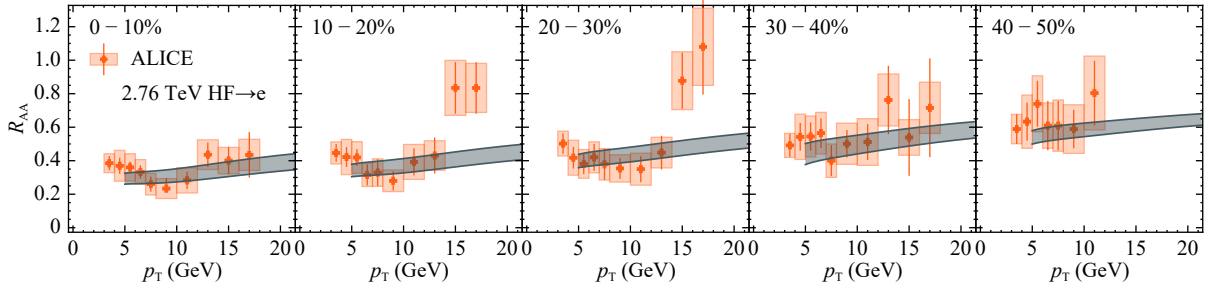


Fig. 13. (color online) Heavy flavor decayed electron R_{AA} for 2.76 TeV Pb-Pb collisions in comparison with ALICE data [56].

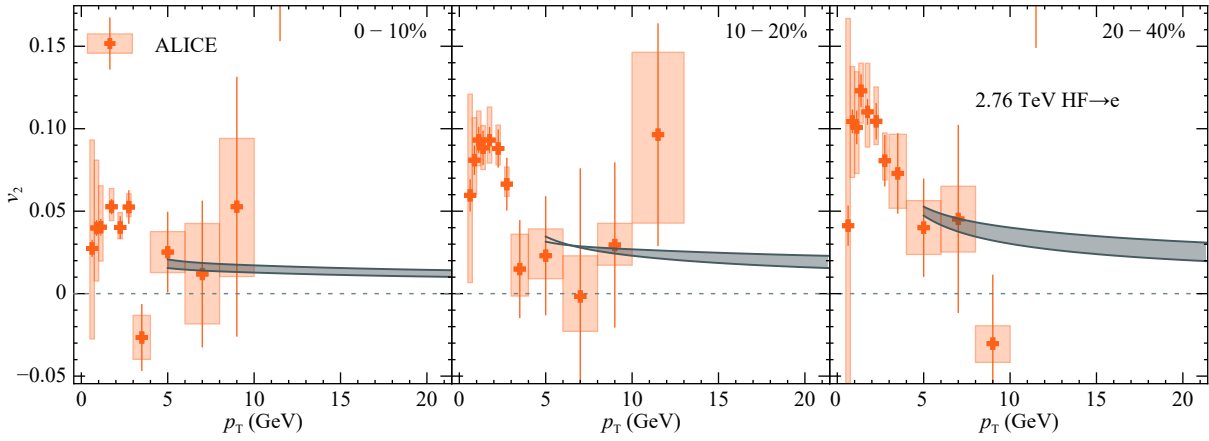


Fig. 14. (color online) Heavy flavor decayed electron v_2 for 2.76 TeV Pb-Pb collisions in comparison with ALICE data [57].

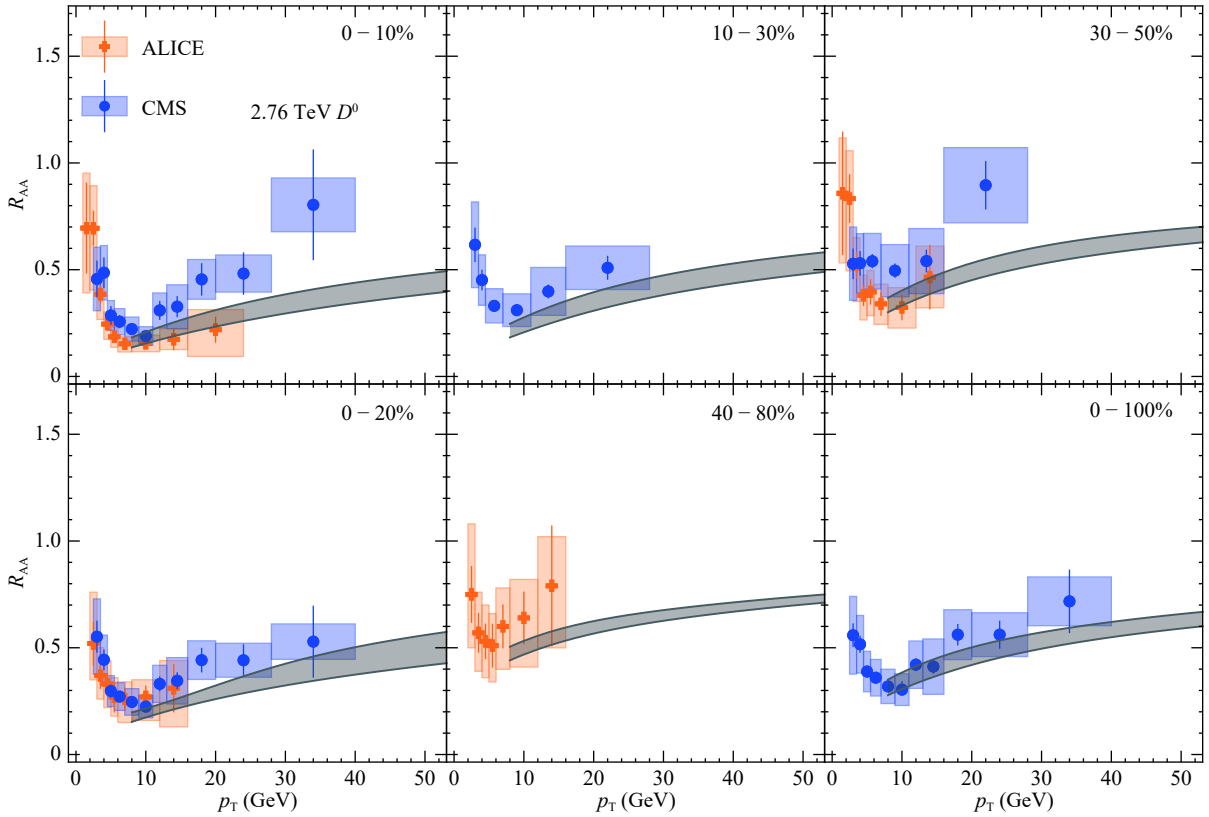


Fig. 15. (color online) Prompt D meson R_{AA} for 2.76 TeV Pb-Pb collisions in comparison with ALICE [54] and preliminary CMS [59] results.

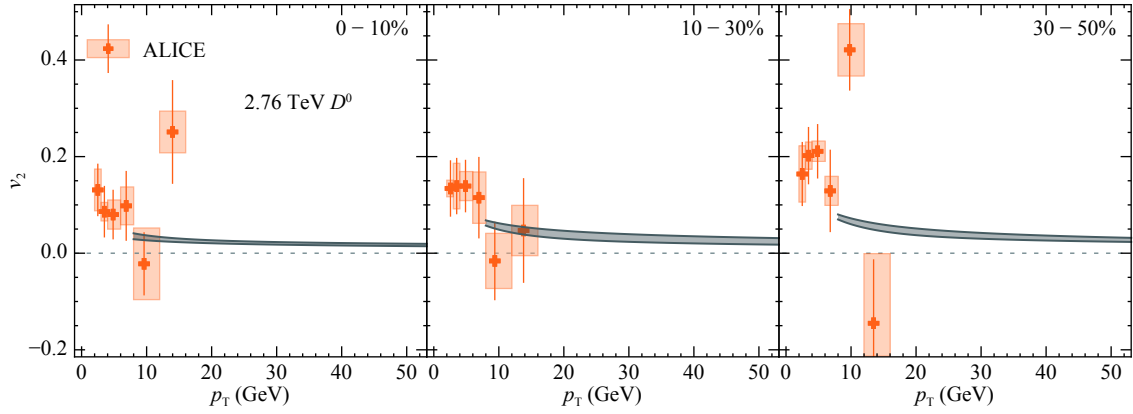


Fig. 16. (color online) D meson v_2 for 2.76 TeV Pb-Pb collisions in comparison with ALICE data [55].

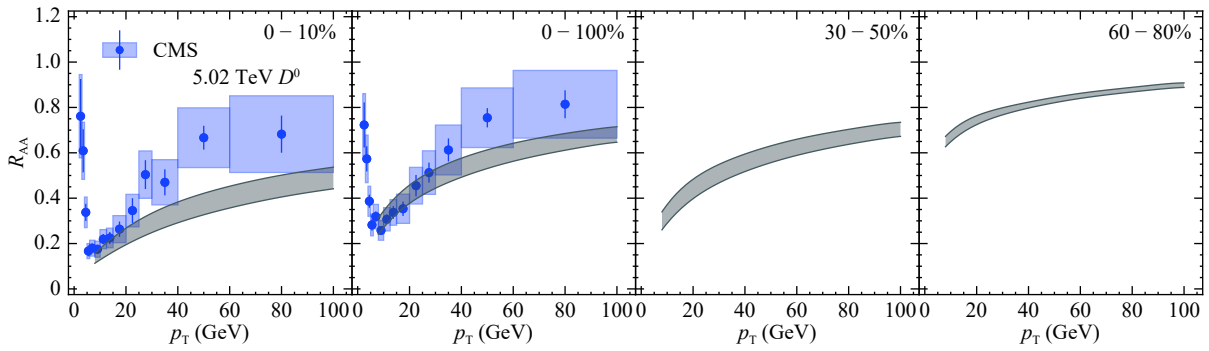


Fig. 17. (color online) Prompt D meson R_{AA} for 5.02 TeV Pb-Pb collisions in comparison with preliminary CMS data [47].

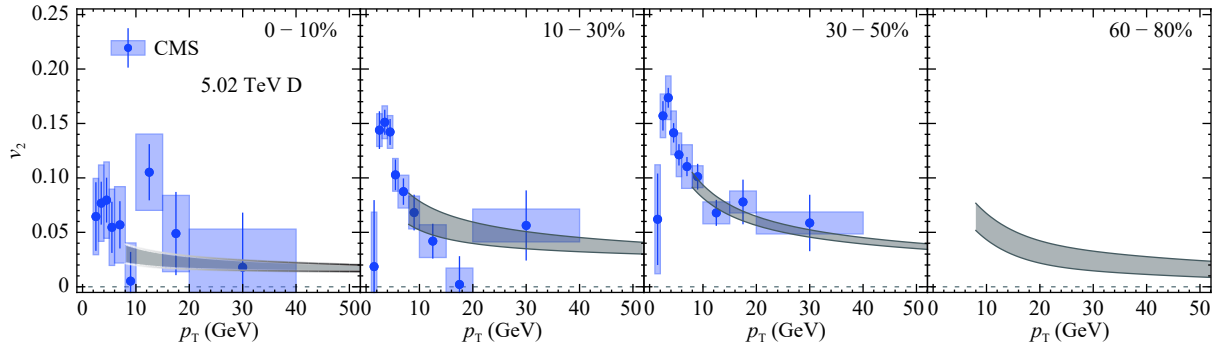


Fig. 18. (color online) Prompt D meson v_2 for 5.02 TeV Pb-Pb collisions in comparison with preliminary CMS data [46].

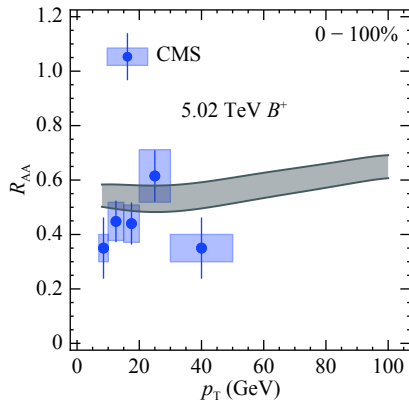


Fig. 19. (color online) Prompt B meson R_{AA} for 5.02 TeV Pb-Pb collisions in comparison with CMS data [60].

and finally CMS results [46, 47, 60] for 5.02 TeV Pb-Pb collisions. A very good agreement between model and data is found by validating a successfully unified description of CUJET3 for both light and heavy flavor jet energy loss observables.

4 CUJET3 predictions for other experimental observables

In the above section we perform a successful test of the CUJET3 framework, which provides a united description for comprehensive sets of experimental data, from average suppression to azimuthal anisotropy, from light flavor to heavy flavor observables, with beam energies

from 200 GeV to 5.02 TeV, and from central to semi-peripheral collisions. With the new colliding system or new experimental observables, we expect more stringent tests to help further constrain the CUJET3 energy loss model. In this section, we show the CUJET3 prediction for ongoing experimental analysis, including jet quenching observables in ^{129}Xe - ^{129}Xe collisions at 5.44 TeV and more heavy flavor signals in 5.02 TeV Pb-Pb collisions.

4.1 Light Hadron R_{AA} in 5.44 TeV ^{129}Xe - ^{129}Xe Collisions

Recently the LHC ran collisions with a new species of nuclei, colliding xenon with 129 nucleons (^{129}Xe) at a beam energy of $\sqrt{s_{NN}} = 5.44$ TeV. In Xe-Xe collisions, the hot medium created is expected to be a bit cooler and shorter lived when compared with the one created in 5.02 TeV Pb-Pb collisions. Given the similar beam energy, it's expected that the difference between observables from these two colliding system provide valuable information on the nature of the QGP, especially on how the hot medium interacts with high energy jets.

In Fig. 20, we show the light hadron R_{AA} and v_2 for both systems. Higher R_{AA} and lower v_2 in 5.44 TeV Xe-Xe collisions (blue bands) are produced, when compared with those in 5.02 TeV Pb-Pb collisions (red dashed curves). This indicates that the high- p_T light hadrons produced in the former system are less suppressed than those produced in latter, exhibiting the sensitivity of the jet-quenching observables to the system size and density: when comparing to those created in Pb-Pb collisions, jets created in Xe-Xe collisions travel a shorter path in the hot medium and interact with less dense matter, hence losing less energy. With this new colliding system, we are able to further test the path length dependence of the CUJET3 jet energy loss model. Such predictions were made before the experimental measurements reported at the Quark Matter 2018 conference. Our predictions are in good agreement with the recently released preliminary data for charged hadron R_{AA} from the ALICE [61], ATLAS [62], and CMS [63] collaborations (as shown in Fig. 20). See also Ref. [63] for a detailed data-model comparison.

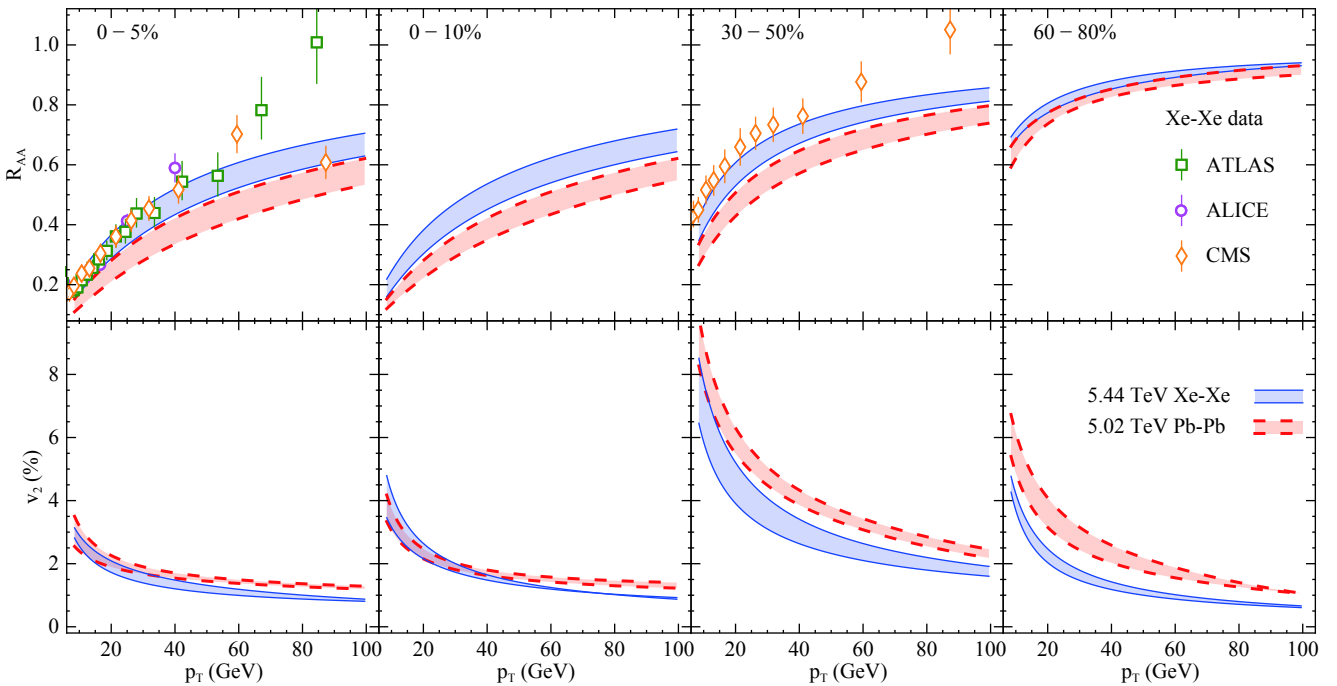


Fig. 20. (color online) Light hadron R_{AA} and v_2 for 5.44 TeV Xe-Xe collisions (blue bands) and 5.02 TeV Pb-Pb collisions (red dashed curves). Preliminary experimental data [61-63] are also shown.

4.2 B -decayed D Meson R_{AA} in 5.02 TeV Pb-Pb Collisions

Another new experimental measurement is the B -decayed D meson R_{AA} in 5.02 TeV Pb-Pb collisions. As

shown in Fig. 21, the R_{AA} of B -decay D meson (left panel) has similar p_T -dependence as that of B mesons (right panel), and both of them are less suppressed than the prompt D meson (middle panel), especially in the region with lower momentum ($p_T < 20$ GeV). We expect that the future precise measurement of B -decay D meson R_{AA} will

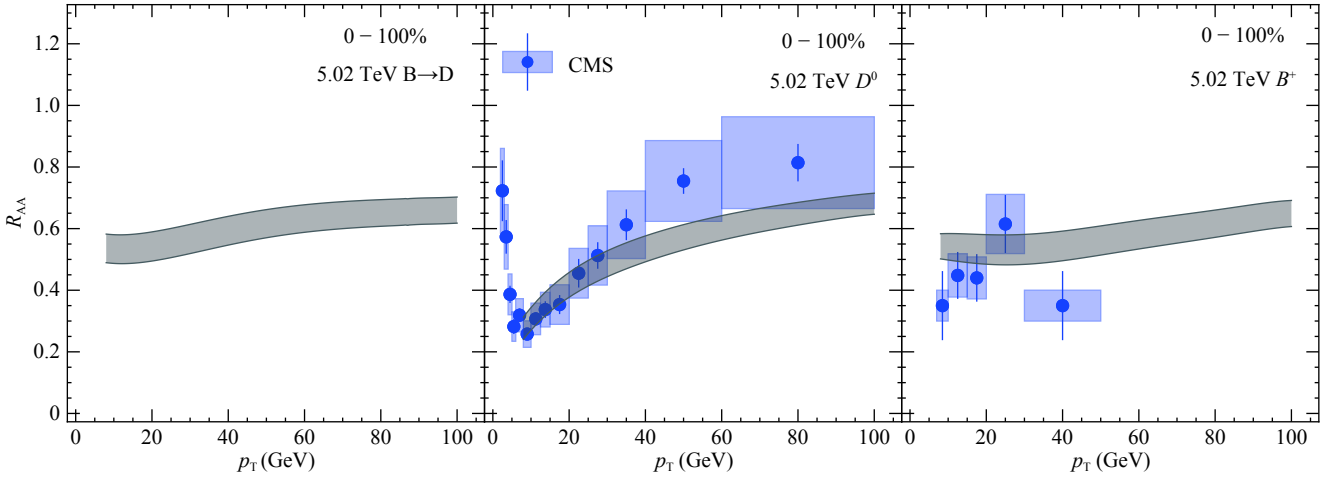


Fig. 21. (color online) R_{AA} for D meson from B -decay (left), prompt D meson (middle), and B meson (right) in minimal-bias 5.02 TeV Pb-Pb collisions.

provide observation of the “dead cone” effect, which suppresses the radiational energy loss of bottom jets.

4.3 High- p_T D mesons in 200 GeV Au-Au collisions

Recently, the STAR Collaboration at RHIC installed the Heavy Flavor Tracker, which allows high precision measurements of open heavy flavor hadrons. Early results of azimuthal anisotropy for lower p_T D mesons has shown interesting properties of the low energy charm quarks [64]. With the CUJET3 predictions for D meson's R_{AA} and v_2 shown in Fig. 22, precise measurements of high p_T D meson jet quenching observable could enable the direct comparison with heavy flavor data, and further test the consistency of the HF sector of CUJET3 energy loss for different beam energies.

4.4 Heavy flavor decayed leptons in 5.02 TeV Pb-Pb collisions

Finally, we show the CUJET3 predictions for heavy flavor decayed muons and electrons in Figs. 23 and 24. Being the decay product of both D and B mesons, the R_{AA} in the lower p_T regime is sensitive to relative ratios between D and B absolute cross sections. We expect more stringent future tests from the heavy flavor sector to help further constrain CUJET3.

5 Jet transport coefficient and shear viscosity

As discussed above, the jet quenching observables of light hadrons provide stringent constraints on values of the jet energy loss parameters. Furthermore, the comparison between three different schemes, (i) sQGMP- χ_T^L , (ii) sQGMP- χ_T^u , and (iii) wQGP, shows the need for chromomagnetic-monopole degrees of freedom, robustly with respect to current theoretical uncertainties on the temperat-

ure dependence of the quark liberation rate. It is of great interest to further compare how the jet and bulk transport properties differ in these schemes, as this paves the way for clarifying the temperature dependence of jet quenching and shear viscous transport properties based on available high p_T data in high-energy A+A collisions.

The jet transport coefficient \hat{q} characterizes the averaged transverse momentum transfer squared per mean free path [67]. For a quark jet (in the fundamental representation F) with initial energy E , we calculate its \hat{q} in the same way as the previous CUJET3.0 computation in [28, 29], via

$$\hat{q}_F(E, T) = \int_0^{6ET} dq_{\perp}^2 \frac{2\pi}{(q_{\perp}^2 + f_E^2 \mu^2(z))(q_{\perp}^2 + f_M^2 \mu^2(z))} \rho(T) \times \left\{ [C_{qq} f_q + C_{qg} f_g] \cdot [\alpha_s^2(q_{\perp}^2)] \cdot [f_E^2 q_{\perp}^2 + f_E^2 f_M^2 \mu^2(z)] + [C_{qm}(1 - f_q - f_g)] \cdot [1] \cdot [f_M^2 q_{\perp}^2 + f_E^2 f_M^2 \mu^2(z)] \right\}, \quad (3)$$

and similarly for a gluon/cmm jet:

$$\hat{q}_g(E, T) = \int_0^{6ET} dq_{\perp}^2 \frac{2\pi}{(q_{\perp}^2 + f_E^2 \mu^2(z))(q_{\perp}^2 + f_M^2 \mu^2(z))} \rho(T) \times \left\{ [C_{gq} f_q + C_{gg} f_g] \cdot [\alpha_s^2(q_{\perp}^2)] \cdot [f_E^2 q_{\perp}^2 + f_E^2 f_M^2 \mu^2(z)] + [C_{gm}(1 - f_q - f_g)] \cdot [1] \cdot [f_M^2 q_{\perp}^2 + f_E^2 f_M^2 \mu^2(z)] \right\}, \quad (4)$$

$$\hat{q}_m(E, T) = \int_0^{6ET} dq_{\perp}^2 \frac{2\pi}{(q_{\perp}^2 + f_E^2 \mu^2(z))(q_{\perp}^2 + f_M^2 \mu^2(z))} \rho(T) \times \left\{ [C_{mq} f_q + C_{mg} f_g] \cdot [1] \cdot [f_E^2 q_{\perp}^2 + f_E^2 f_M^2 \mu^2(z)] + [C_{mm}(1 - f_q - f_g)] \cdot [\alpha_s^{-2}(q_{\perp}^2)] \cdot [f_M^2 q_{\perp}^2 + f_E^2 f_M^2 \mu^2(z)] \right\}. \quad (5)$$

The quasi-parton density fractions of quark (q) or gluon

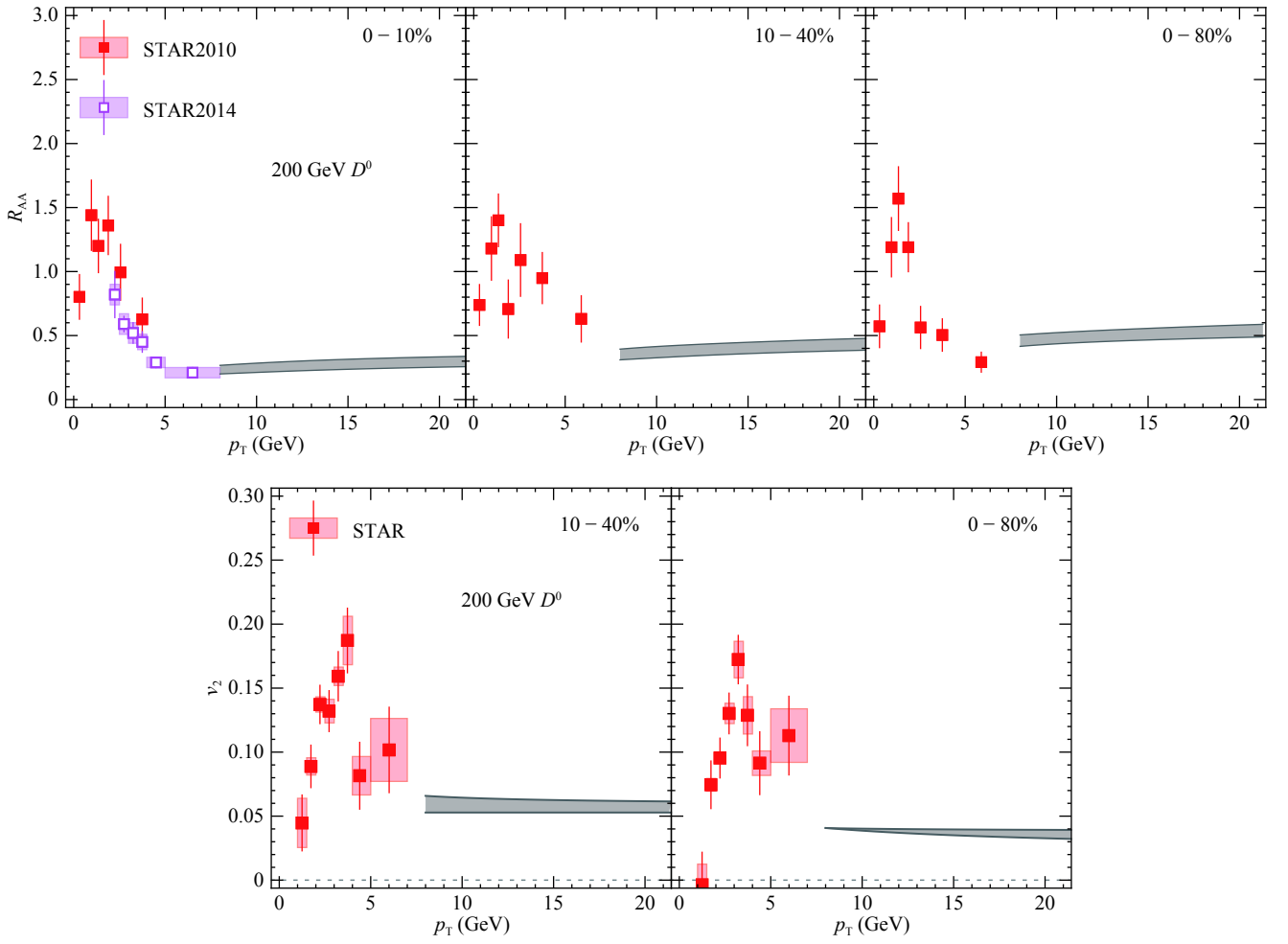


Fig. 22. D meson R_{AA} and v_2 in 200 GeV Au-Au collisions. STAR data [64-66] for lower p_T range are also shown. Red (magenta) symbols labeled STAR2010 (STAR2014) correspond to data published in Ref. [65] (Ref. [66]) analysis of the RHIC 2010/11 (2014) data set.

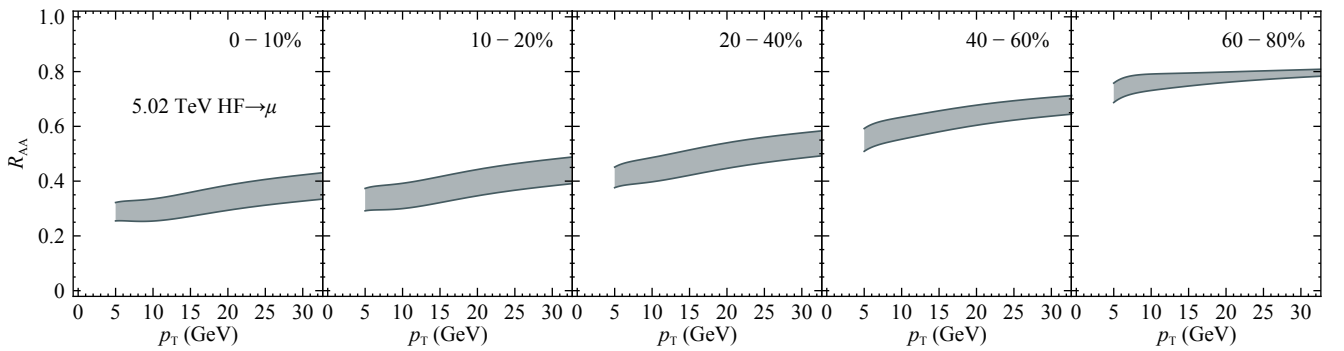


Fig. 23. R_{AA} for heavy flavor decayed muon in 5.02 TeV Pb-Pb collisions.

(g), denoted as $f_{q,g}$, are defined as

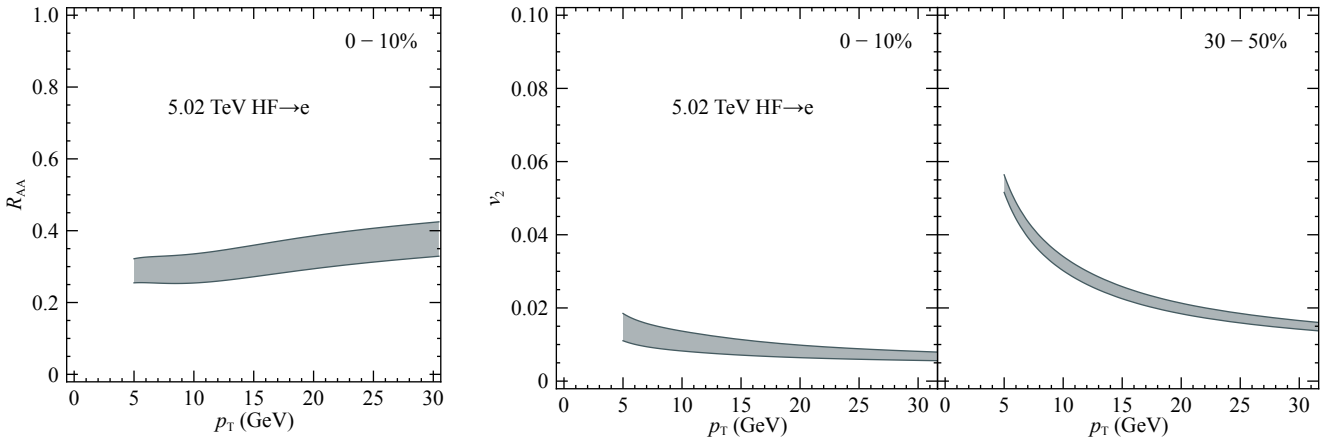
$$\begin{aligned} f_q &= c_q L(T), f_g = c_g L(T)^2, \quad (\text{if } \chi_T^L) \\ f_q &= c_q \tilde{\chi}_2^u(T), f_g = c_g L(T)^2, \quad (\text{if } \chi_T^u) \end{aligned} \quad (6)$$

respectively for sQGMP χ_T^L and χ_T^u scheme. The magnetically charged quasi-particle density fraction is hence

$f_m = 1 - \chi_T = 1 - f_q - f_g$. The color factors are given by

$$\begin{aligned} C_{qq} &= \frac{4}{9}, C_{gg} = C_{mm} = C_{gm} = C_{mg} = \frac{9}{4}, \\ C_{qg} &= C_{gq} = C_{qm} = C_{mq} = 1. \end{aligned} \quad (7)$$

While switching to the wQGP scheme, by taking


 Fig. 24. R_{AA} (left) and v_2 (right) for heavy flavor decayed muon in 5.02 TeV Pb-Pb collisions.

$f_q = c_q, f_g = c_g, f_E = 1, f_M = 0$, turning off the cmm channel, and employing the running coupling $\alpha_s(Q^2)$ defined in Eq. (A5), the jet transport coefficient \hat{q} for a quark/gluon jet defined in Eq.(3/4) returns to that of the CUJET2.0 framework [68].

Once the jet transport coefficient \hat{q} has been computed, $\hat{q}(T, E)$ can be extrapolated down to thermal energy scales $E \sim 3T/2$ and the shear viscosity to entropy density ratio η/s can be estimated based on kinetic theory in a weakly-coupled quasi-particle scenario [69-71]. An estimate of η/s can be derived as

$$\begin{aligned}
 \eta/s &= \frac{1}{s} \frac{4}{15} \sum_a \rho_a \langle p \rangle_a \lambda_a^\perp \\
 &= \frac{4T}{5s} \sum_a \rho_a \left(\sum_b \rho_b \int_0^{(S_{ab})/\epsilon} dq_\perp^2 \frac{4q_\perp^2}{\langle S_{ab} \rangle} \frac{d\sigma_{ab}}{dq_\perp^2} \right)^{-1} \\
 &= \frac{18T^3}{5s} \sum_a \rho_a / \hat{q}_a(T, E = 3T/2).
 \end{aligned} \quad (8)$$

Here, $\rho_a(T) \equiv f_a \rho(T)$ is the quasi-parton density of type $a = q, g, m$. The mean thermal Mandelstam variable is $\langle S_{ab} \rangle \sim 18T^2$. Clearly, the η/s of the system is dominated by the ingredient that has the largest ρ_a / \hat{q}_a .

In the left panel of Fig. 25, we show the temperature

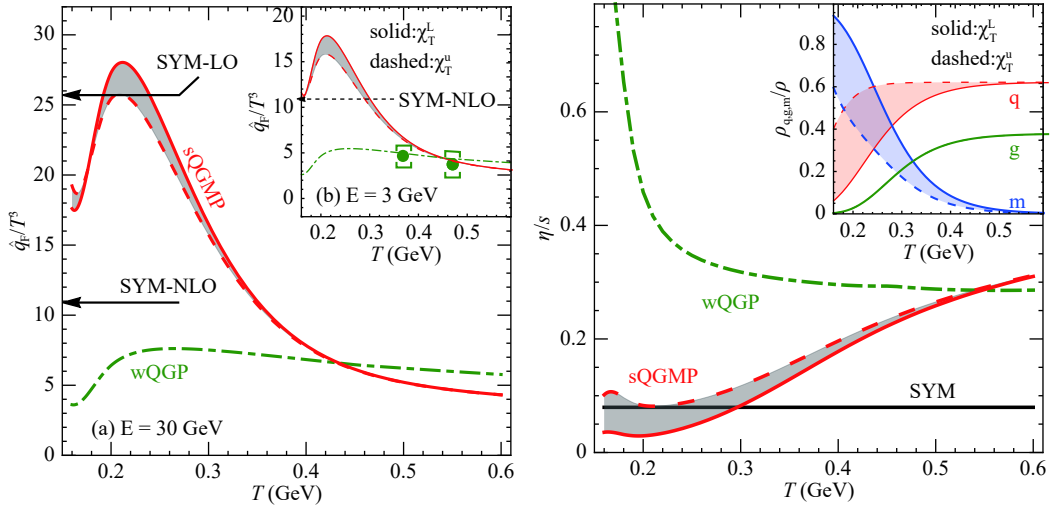


Fig. 25. (color online) (left) Temperature dependence of the dimensionless jet transport coefficient \hat{q}_F/T^3 for a light quark jet with initial energy $E =$ (a) 30 GeV, (b) 3 GeV in CUJET framework with three schemes: (i) sQGMP- χ_T^L scheme (red solid curve), (ii) sQGMP- χ_T^u scheme (red dashed curve), and (iii) wQGP/CUJET2.0 scheme (green dotted-dashed curve). $\mathcal{N} = 4$ leading order/next to leading order Super Yang-Mills $\hat{q}_{SYM-LO}/T^3 = \frac{\pi^{3/2}\Gamma(\frac{3}{4})}{\Gamma(\frac{5}{4})} \sqrt{\lambda}$ and $\hat{q}_{SYM-NLO}/T^3 = \frac{\pi^{3/2}\Gamma(\frac{3}{4})}{\Gamma(\frac{5}{4})} \sqrt{\lambda}(1 - \frac{1.957}{\sqrt{\lambda}})$, respectively [17] with coupling $\lambda = 4\pi \cdot 3 \cdot 0.31$, are plotted for comparison. Green blobs in inset (b) show the JET collaboration [67] model average of \hat{q}_F/T^3 , while boxes represent uncertainties. (right) Shear viscosity to entropy density ratio η/s estimated with scheme (i) (red solid curve), (ii) (red dashed curve), and (iii) (green dotted-dashed curve). Inset shows quasi-particle number density fraction of q, g, m in liberation scheme χ_T^L (solid curve) and χ_T^u (dashed curve).

dependence of the dimensionless jet transport coefficient \hat{q}_F/T^3 for a light quark jet with initial energy $E = 30$ GeV or $E = 3$ GeV with all three schemes. Corresponding results from the JET collaboration [67] model average and AdS/CFT limit [17] are also plotted for comparison. As discussed in previous CUJET3.0 studies [28, 29], the near- T_c enhancement of the dimensionless jet transport coefficient can be observed with robust dependence on quark liberation schemes.

In the right panel of Fig. 25, we show the shear viscosity to entropy density ratio η/s estimated in by kinetic theory using the \hat{q} extrapolation Eq. (8) with schemes (i) (red solid curve), (ii) (red dashed curve), and (iii) (green dotted-dashed curve). The inset shows the quasi-particle number density fraction of q, g, and m in the liberation scheme χ_T^L (solid curve) and χ_T^U (dashed curve). In the near T_c regime, in the χ_T^L scheme, the total η/s is dominated by q, while in the χ_T^U “slow” quark liberation scheme the total η/s is dominated by m. For each sQGMP scheme, there is a clear η/s minimum at $T \sim 210$ MeV, which is comparable with the SYM limit $(\eta/s)_{\min} = 1/4\pi$.

6 Summary

In this study, we presented the CUJET3.1 framework and performed a global quantitative χ^2 analysis by comparison with a large set of light hadron jet quenching observables for central and semi-central heavy-ion collisions for beam energies $\sqrt{s_{\text{NN}}} = 200$ GeV(Au-Au), 2.76 TeV(Pb-Pb), and 5.02 TeV(Pb-Pb). This analysis allows the optimization of the two key parameters in the CUJET3.1 framework, and the global χ^2 is found to be minimized to near unity for $\alpha_c \approx 0.9 \pm 0.1$, and $c_m \approx 0.25 \pm 0.03$. With such parameters, the CUJET3 framework gives a unified, systematic and successful de-

scription of a comprehensive set of available data, from average suppression to azimuthal anisotropy, from light to heavy flavors, and from central to semi-peripheral collisions for all three colliding systems. Thus, CUJET3.1 provides a non-perturbative solution to the long standing hard (R_{AA} and v_2) versus soft “perfect fluidity” puzzle. Such a quantitative analysis strongly supports the necessity of including the interaction between jet and chromomagnetic-monopoles to provide a consistent description of both R_{AA} and v_2 across centrality and beam energy.

In this work, we also present CUJET3 predictions for a number of observables for additional tests. We expect that the comparison between the light hadron R_{AA} in 5.44 TeV Xe-Xe collisions and those observed in 5.02 TeV Pb-Pb collisions will further test the path length dependence of the CUJET3 jet energy loss model. The mass dependence of the jet energy loss in CUJET3 can also be further tested by its predictions for B -decayed D meson R_{AA} in 5.02 TeV Pb-Pb collisions, to be compared with future precise measurements of this observable.

Finally, we emphasize the importance of the theoretical advantage of the CUJET3.1 framework. It is not only χ^2 consistent with soft and hard observables data at RHIC and LHC, but also with non-perturbative lattice QCD data. Remarkably, estimates from this framework lead to a shear viscosity to entropy density ratio $\frac{\eta}{s} \sim 0.1$, which are not only consistent with the extracted values from experimental soft + hard A + A phenomenology, but also theoretically internally consistent with the sQGMP kinetic theory link, $\frac{\eta}{s} \sim \frac{T^3}{\hat{q}_F(E \rightarrow 3T, T)}$, between long distance collective fluid properties and short distance jet quenching physics, especially near T_c .

The authors are particularly grateful to Jiechen Xu for major contributions in establishing the CUJET3 framework.

Appendix A: CUJET3 framework

The CUJET3 model is a jet energy loss simulation framework built on a non-perturbative microscopic model for hot medium as semi-quark-gluon-monopole plasma (sQGMP), which integrates two essential elements of confinement, i.e. the suppression of quarks/gluons and emergent magnetic monopoles. A detailed description of its framework can be found in previously published CUJET studies [9, 28, 29, 67, 68]. The CUJET3 model employs the TG elastic energy loss formula [72-74] for collisional processes, with the energy loss given by

$$\frac{dE(z)}{d\tau} = -C_R \pi [\alpha_s(\mu(z)) \alpha_s(6E(z)\Gamma(z)T(z))] T(z)^2 \left(1 + \frac{N_f}{6}\right) \times \log \left[\frac{6T(z) \sqrt{E(z)^2 \Gamma(z)^2 - M^2}}{(E(z)\Gamma(z) - \sqrt{E(z)^2 \Gamma(z)^2 - M^2} + 6T(z)) \mu(z)} \right], \quad (\text{A1})$$

and the average number of collisions

$$\bar{N}_c = \int_0^{\tau_{\max}} d\tau \left[\frac{\alpha(\mu(z)) \alpha(6E(z)\Gamma(z)T(z))}{\mu(z)^2} \right] \left[\frac{\Gamma(z)}{\gamma_f} \frac{18\zeta(3)}{\pi} (4 + N_f) T(z)^3 \right], \quad (\text{A2})$$

where the $E(z)$ integral equation is solved recursively. For radi-

ational processes, the CUJET3 model employs the dynamical DGLV opacity expansion theory [1, 3, 6, 75] with the Liao-Shuryak chromo-magnetic-monopole scenario [76-80]. The inclusive single gluon emission spectrum at $n = 1$ opacity series reads:

$$x_E \frac{dN_g^{n=1}}{dx_E} = \frac{18C_R}{\pi^2} \frac{4+N_f}{16+9N_f} \int d\tau \rho(z) \Gamma(z) \int d^2 k_\perp \alpha_s \left(\frac{k_\perp^2}{x_+(1-x_+)} \right) \times \int d^2 q \frac{\alpha_s^2(q_\perp^2) \left(f_E^2 + \frac{f_E^2 f_M^2 \mu^2(z)}{q_\perp^2} \right) \chi_T + \left(f_M^2 + \frac{f_E^2 f_M^2 \mu^2(z)}{q_\perp^2} \right) (1-\chi_T)}{(q_\perp^2 + f_E^2 \mu^2(z))(q_\perp^2 + f_M^2 \mu^2(z))} \times \frac{-2(\mathbf{k}_\perp - \mathbf{q}_\perp)}{(\mathbf{k}_\perp - \mathbf{q}_\perp)^2 + \chi^2(z)} \left[\frac{\mathbf{k}_\perp}{\mathbf{k}_\perp^2 + \chi^2(z)} - \frac{(\mathbf{k}_\perp - \mathbf{q}_\perp)}{(\mathbf{k}_\perp - \mathbf{q}_\perp)^2 + \chi^2(z)} \right] \times \left[1 - \cos \left(\frac{(\mathbf{k}_\perp - \mathbf{q}_\perp)^2 + \chi^2(z)}{2x_+ E} \tau \right) \right] \left(\frac{x_E}{x_+} \right) \left| \frac{dx_+}{dx_E} \right|. \quad (\text{A3})$$

$C_R = 4/3$ or 3 is the quadratic Casimir of the quark or gluon; the transverse coordinate of the hard parton is denoted by $\mathbf{z} = (x_0 + \tau \cos \phi, y_0 + \tau \sin \phi, \tau)$; E is the energy of the hard parton in the lab frame; \mathbf{k}_\perp ($|\mathbf{k}_\perp| \leq x_E E \cdot \Gamma(z)$) and \mathbf{q}_\perp ($|\mathbf{q}_\perp| \leq 6T(z)E \cdot \Gamma(z)$) are the local transverse momentum of the radiated gluon and the local transverse momentum transfer, respectively. The gluon fractional energy x_E and fractional plus-momentum x_+ are connected by $x_+(x_E) = x_E [1 + \sqrt{1 - (k_\perp/x_E E)^2}] / 2$. We note that in the temperature range $T \sim T_c$, the coupling α_s becomes non-perturbative [76, 78, 81, 82]. Analysis of lattice data [78] suggests the following thermal running coupling form:

$$\alpha_s(Q^2) = \frac{\alpha_c}{1 + \frac{9\alpha_c}{4\pi} \log \left(\frac{Q^2}{T_c^2} \right)}, \quad (\text{A4})$$

with $T_c = 160$ MeV. Note that at large Q^2 , Eq. (A4) converges to vacuum running $\alpha_s(Q^2) = \frac{4\pi}{9 \log(Q^2/\Lambda^2)}$, while at $Q = T_c$, $\alpha_s(T_c^2) = \alpha_c$.

The particle number density $\rho(z)$ is determined by the medium temperature $T(z)$ via $\rho(T) = \xi_s s(T)$, where $\xi_s = 0.253$ for $N_c = 3$, $N_f = 2.5$ Stefan-Boltzmann gas, and $s(T)$ is the bulk entropy density. In the presence of hydrodynamical four-velocity fields u_f^μ , boosting back to the lab frame, a relativistic correction $\Gamma(z) = u_f^\mu n_\mu$ should be taken into account [18, 83], where the flow four-velocity $u_f^\mu = \gamma_f(1, \vec{\beta}_f)$ and the null hard parton four-velocity $n^\mu = (1, \vec{\beta}_j)$. The bulk evolution profiles $(T(z), \rho(z), u_f^\mu(z))$ are generated from the VISH2+1 code [22, 84, 85] with event-averaged Monte-Carlo Glauber initial condition, $\tau_0 = 0.6$ fm/c, s95p-PCE Equation of State (EOS), $\eta/s = 0.08$, and Cooper-Frye freeze-out temperature 120 MeV [30, 86-90]. Event-averaged smooth profiles are embedded, and the path integrations $\int d\tau$ for jets initially produced at transverse coordinates (\mathbf{x}_0, ϕ) are cut off at dynamical $T(z(\mathbf{x}_0, \phi, \tau))|_{\tau_{\max}} \equiv T_{\text{cut}} = 160$ MeV hyper-surfaces [68].

In the CUJET2 framework, assuming weakly-coupling QGP, the running coupling takes the form (with $\Lambda_{\text{QCD}} = 200$ MeV)

$$\alpha_s(Q^2) = \begin{cases} \alpha_{\max} & \text{if } Q \leq Q_{\min}, \\ \frac{4\pi}{9 \log(Q^2/\Lambda_{\text{QCD}}^2)} & \text{if } Q > Q_{\min}. \end{cases} \quad (\text{A5})$$

The Debye screening mass $\mu(z)$ is determined from solving the self-consistent equation

$$\mu(z) = \sqrt{4\pi\alpha_s(\mu^2(z))T(z)} \sqrt{1+N_f/6} \quad (\text{A6})$$

as in [91]; $\chi^2(z) = M^2 x_+^2 + m_g^2(z)(1-x_+)$ regulates the soft collinear divergences in the color antennae and controls the Landau-Pomeranchuk-Migdal (LPM) phase, the gluon plasmon mass $m_g(z) = f_E \mu(z) / \sqrt{2}$.

Because the sQGMP contains both chromo-electrically charged quasi-particles (cec) and chromo magnetically charged quasi-particles (cmc), when jets propagate through the medium near T_c , the total quasi-particle number density ρ is divided into EQPs with fraction $\chi_T = \rho_E / \rho$ and MQPs with fraction $1 - \chi_T = \rho_M / \rho$. The parameter f_E and f_M is defined via $f_E \equiv \mu_E / \mu$ and $f_M \equiv \mu_M / \mu$, with μ_E and μ_M being the electric and magnetic screening mass, respectively, following

$$f_E(T(z)) = \sqrt{\chi_T(T(z))}, \quad f_M(T(z)) = c_{mg}(T(z)), \quad (\text{A7})$$

with the local electric ‘‘coupling’’ $g(T(z)) = \sqrt{4\pi\alpha_s(\mu^2(T(z)))}$.

In current sQGMP modeling, the cec component fraction χ_T remains a theoretical uncertainty related to the question of how fast the color degrees of freedom get liberated. To estimate χ_T , one notices that: (1) when temperature is high, χ_T should reach unity, i.e. $\chi_T(T \gg T_c) \rightarrow 1$; (2) in the vicinity of the regime $T \sim (1-3)T_c$, the renormalized expectation value of the Polyakov loop L (let us redefine $L \equiv \ell = \langle \text{tr} \mathcal{P} \exp[ig \int_0^{1/T} d\tau A_0] \rangle / N_c$) deviates significantly from unity, implying the suppression $\sim L$ for quarks and $\sim L^2$ for gluons in the semi-QGP model [92–95]. Consequently, in the liberation scheme (χ_T^L -scheme), we define the cec component fraction as

$$\chi_T(T) \equiv \chi_T^L(T) = c_q L(T) + c_g L^2(T) \quad (\text{A8})$$

for the respective fraction of quarks and gluons, where we take the Stefan-Boltzmann (SB) fraction coefficients, $c_q = (10.5N_f) / (10.5N_f + 16)$ and $c_g = 16 / (10.5N_f + 16)$, and the temperature dependent Polyakov loop $L(T)$ parameterized as (T in GeV)

$$L(T) = \left[\frac{1}{2} + \frac{1}{2} \text{Tanh}[7.69(T - 0.0726)] \right]^{10}, \quad (\text{A9})$$

adequately fitting both the HotQCD [96] and Wuppertal-Budapest [97] lattice results.

On the other hand, another useful measure of the non-perturbative suppression of the color electric DOF is provided by the quark number susceptibilities [98-101]. The diagonal susceptibility is proposed as part of the order parameter for chiral symmetry breaking/restoration in [98], and plays a similar role as properly renormalized L for quark DOFs. In this scheme, we parametrize the lattice diagonal susceptibility of u quark number density, renormalizing the susceptibility by its value at $T \rightarrow \infty$, as (T in GeV)

$$\tilde{\chi}_2^u(T) \equiv \frac{\chi_2^u(T)}{0.91} = \left[\frac{1}{2} \{1 + \text{Tanh}[15.65(T - 0.0607)]\} \right]^{10}, \quad (\text{A10})$$

and define the cec component fraction in the deconfinement scheme (χ_T^u -scheme) as:

$$\chi_T(T) \equiv \chi_T^u(T) = c_q \tilde{\chi}_2^u(T) + c_g L^2(T). \quad (\text{A11})$$

These two different schemes, for the rate of ‘‘quark liberation’’, with χ_T^L the ‘‘slow’’ and χ_T^u the ‘‘fast’’, provide useful estimates of

theoretical systematic uncertainties associated with the quark component of the sQGMP model.

Finally, in the CUJET3 framework, the $p+p$ spectra of light quarks and gluons are generated by LO pQCD [102] calculations with CTEQ5 Parton Distribution Functions (PDF); while those of charm and bottom quarks are generated from the FONLL calculation [103] with CTEQ6M Parton Distribution Functions. In the meantime, the spectra of light hadrons are computed with KKP Fragmentation Functions [104]; and those of open heavy flavor mesons are computed with Peterson Fragmentation Functions [105] (taking $\epsilon = 0.06$ for D meson, and $\epsilon = 0.006$ for B meson). The decay of heavy flavor mesons into leptons, including $D \rightarrow \ell$, $B \rightarrow \ell$, and $B \rightarrow D \rightarrow \ell$ channels, follows the same parameterization as in [103]. Comparison between theory predictions and experimental measurements on the initial unquenched invariant $p+p \rightarrow h^\pm + X$ distribution is shown in the right panel of Fig. 26, for 5.02 TeV collisions, and in a previous CUJET3.0 study [29].

Appendix B: Improvements in CUJET3.1

In this Appendix, we discuss the improvements of the CUJET3.1 framework with respect to the earlier CUJET3.0 framework version. One important motivation for the CUJET3.1 upgrade reported in the present paper was to uncover causes and correct the discrepancy of CUJET3.0 predictions for LHC 5.02 ATeV Pb + Pb collisions, reported by CMS in Ref. [35] with the nuclear modification factor R_{AA} (see Fig. 27), as well as in Ref. [36] with their observed p_T and especially the centrality dependence of the hard elliptic asymmetry v_2 (see Fig. 28).

After a systematic examination, we found and corrected two issues in previous CUJET3.0 simulations for 5.02 ATeV Pb + Pb collisions. (i) First, the initial parton spectra were not consistently read in: the flavor factor of 3 was missed for light quark spectra. Resultantly, a higher fraction of the final hadrons were fragmented from gluon jets, which are more quenched relative to quark jets and caused the over-quenched R_{AA} . (ii) Second, the probability distribution of initial jet production was incorrectly oriented (with x - and y -axis switched), and consequently a wrong centrality dependence of v_2 was predicted. By correcting these two issues, the CUJET3.1 simulation correctly reproduces the p_T and centrality dependence of both R_{AA} and v_2 . Details of the comparison are shown in Figs. 9 and 10 in Sec. 3.1.

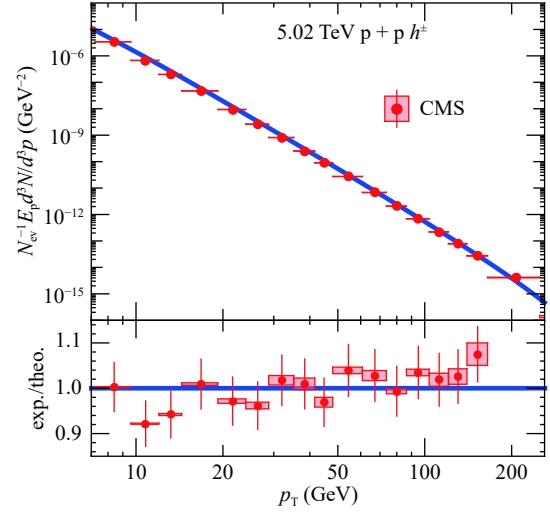


Fig. 26. (color online) Comparison between initial unquenched invariant momentum distribution of charged hadron, predicted using CTEQ5 [102] PDF and KKP fragmentation [104], and 5.02 TeV CMS data within $|\eta| < 1$ [35]. Experiment-to-theory ratio is also shown in the lower panel.

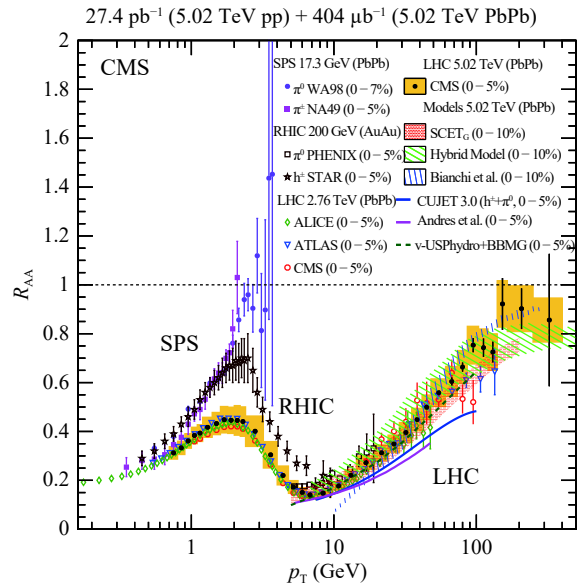


Fig. 27. (color online) Reproduced from Fig. 5 of CMS Ref. [35] (with permission): R_{AA} results as a function of p_T in (0–5)% centrality class. Vertical bars (shaded boxes) represent statistical (systematic) uncertainties. Blue curve represents calculation made with CUJET3.0 [29]

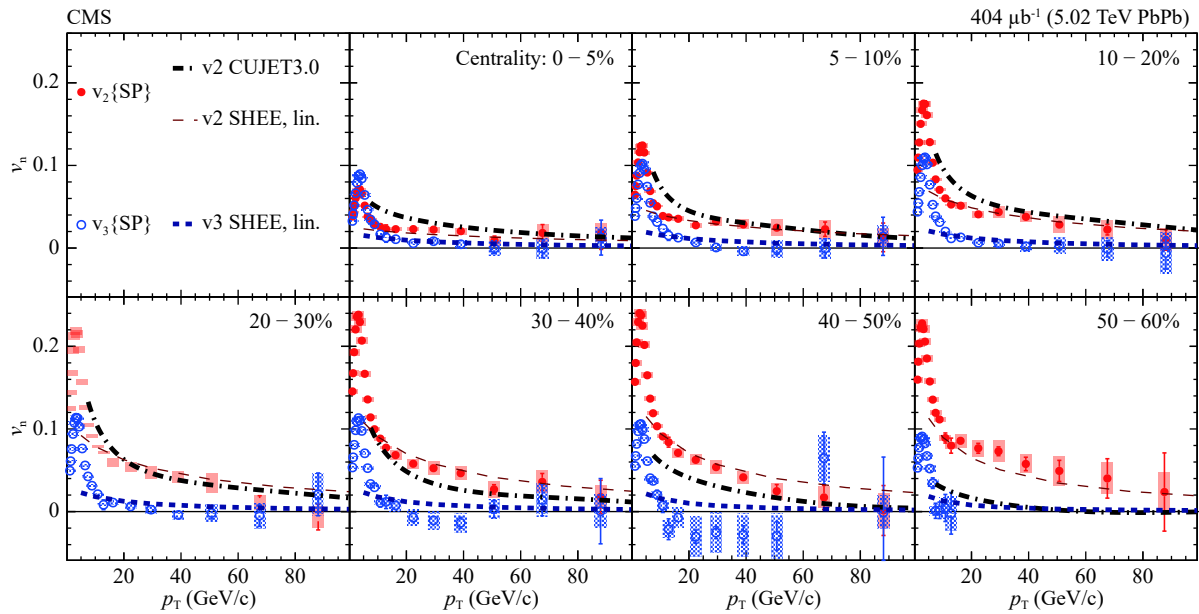


Fig. 28. (color online) Reproduced from Fig. 1 of CMS Ref. [36] (with permission): v_2 and v_3 results from SP method as a function of p_T , in seven collision centrality ranges from (0–5)% to (50–60)%. Vertical bars (shaded boxes) represent statistical (systematic) uncertainties. Curves represent calculations made with CUJET 3.0 [29] and SHEE [31] models.

References

- 1 M. Gyulassy and X.-n. Wang, Nucl. Phys. B, **420**: 583 (1994), arXiv:[nucl-th/9306003](#)
- 2 M. Gyulassy, P. Levai, and I. Vitev, Nucl. Phys. B, **571**: 197 (2000), arXiv:[hep-ph/9907461](#)
- 3 M. Gyulassy, P. Levai, and I. Vitev, Nucl. Phys. B, **594**: 371 (2001), arXiv:[nucl-th/0006010](#)
- 4 M. Gyulassy, P. Levai, and I. Vitev, Phys. Rev. D, **66**: 014005 (2002), arXiv:[nucl-th/0201078](#)
- 5 I. Vitev and M. Gyulassy, Phys. Rev. Lett., **89**: 252301 (2002), arXiv:[hep-ph/0209161](#)
- 6 M. Djordjevic and M. Gyulassy, Nucl. Phys. A, **733**: 265 (2004), arXiv:[nucl-th/0310076](#)
- 7 M. Gyulassy, I. Vitev, X.-N. Wang, and B.-W. Zhang, in Quark-gluon plasma 4, edited by R. C. Hwa and X.-N. Wang (2003), pp. 123–191, nucl-th/0302077.
- 8 S. Wicks, W. Horowitz, M. Djordjevic, and M. Gyulassy, Nucl. Phys. A, **784**: 426 (2007), arXiv:[nucl-th/0512076](#)
- 9 A. Buzzatti and M. Gyulassy, Phys. Rev. Lett., **108**: 022301 (2012), arXiv:[1106.3061](#)
- 10 X.-f. Guo and X.-N. Wang, Phys. Rev. Lett., **85**: 3591 (2000), arXiv:[hep-ph/0005044](#)
- 11 X.-N. Wang and X.-f. Guo, Nucl. Phys. A, **696**: 788 (2001), arXiv:[hep-ph/0102230](#)
- 12 A. Majumder, C. Nonaka, and S. A. Bass, Phys. Rev. C, **76**: 041902 (2007), arXiv:[nucl-th/0703019](#)
- 13 S. Cao, T. Luo, G.-Y. Qin, and X.-N. Wang, Phys. Lett. B, **777**: 255 (2018), arXiv:[1703.00822](#)
- 14 P. B. Arnold, G. D. Moore, and L. G. Yaffe, JHEP, **06**: 030 (2002), arXiv:[hep-ph/0204343](#)
- 15 P. B. Arnold, G. D. Moore, and L. G. Yaffe, JHEP, **01**: 030 (2003), arXiv:[hep-ph/0209353](#)
- 16 P. B. Arnold, G. D. Moore, and L. G. Yaffe, JHEP, **05**: 051 (2003), arXiv:[hep-ph/0302165](#)
- 17 H. Liu, K. Rajagopal, and U. A. Wiedemann, Phys. Rev. Lett., **97**: 182301 (2006), arXiv:[hep-ph/0605178](#)
- 18 H. Liu, K. Rajagopal, and U. A. Wiedemann, JHEP, **03**: 066 (2007), arXiv:[hep-ph/0612168](#)
- 19 M. L. Miller, K. Reyers, S. J. Sanders, and P. Steinberg, Ann. Rev. Nucl. Part. Sci., **57**: 205 (2007), arXiv:[nucl-ex/0701025](#)
- 20 J. S. Moreland, J. E. Bernhard, and S. A. Bass, Phys. Rev. C, **92**: 011901 (2015), arXiv:[1412.4708](#)
- 21 E. Iancu and R. Venugopalan, in Quark-gluon plasma 4, edited by R. C. Hwa and X.-N. Wang (2003), pp. 249–3363, hep-ph/0303204.
- 22 C. Shen, U. Heinz, P. Huovinen, and H. Song, Phys. Rev. C, **82**: 054904 (2010), arXiv:[1010.1856](#)
- 23 J. Noronha-Hostler, G. S. Denicol, J. Noronha, R. P. G. Andrade, and F. Grassi, Phys. Rev. C, **88**: 044916 (2013), arXiv:[1305.1981](#)
- 24 J. Noronha-Hostler, J. Noronha, and F. Grassi, Phys. Rev. C, **90**: 034907 (2014), arXiv:[1406.3333](#)
- 25 J. Noronha-Hostler, J. Noronha, and M. Gyulassy, Phys. Rev. C, **93**: 024909 (2016), arXiv:[1508.02455](#)
- 26 B. Schenke, S. Jeon, and C. Gale, Phys. Rev. C, **82**: 014903 (2010), arXiv:[1004.1408](#)
- 27 B. Schenke, S. Jeon, and C. Gale, Phys. Rev. Lett., **106**: 042301 (2011), arXiv:[1009.3244](#)
- 28 J. Xu, J. Liao, and M. Gyulassy, Chin. Phys. Lett., **32**: 092501 (2015), arXiv:[1411.3673](#)
- 29 J. Xu, J. Liao, and M. Gyulassy, JHEP, **02**: 169 (2016), arXiv:[1508.00552](#)
- 30 C. Shen, Z. Qiu, H. Song, J. Bernhard, S. Bass, and U. Heinz, Comput. Phys. Commun., **199**: 61 (2016), arXiv:[1409.8164](#)
- 31 J. Noronha-Hostler, B. Betz, J. Noronha, and M. Gyulassy, Phys. Rev. Lett., **116**: 252301 (2016), arXiv:[1602.03788](#)
- 32 S. Shi, J. Liao, and M. Gyulassy, Chin. Phys. C, **42**: 104104 (2018), arXiv:[1804.01915](#)
- 33 S. Acharya, et al (ALICE), JHEP, **11**: 013 (2018), arXiv:[1802.09145](#)
- 34 ATLAS collaboration (ATLAS), ATLAS-CONF-2017-012 (2017).
- 35 V. Khachatryan, et al (CMS), JHEP, **04**: 039 (2017), arXiv:[1611.01664](#)
- 36 A. M. Sirunyan, et al (CMS), Phys. Lett. B, **776**: 195 (2018), arXiv:[1702.00630](#)
- 37 J. Adam, et al (ALICE), Phys. Rev. Lett., **116**: 132302 (2016),

- arXiv:1602.01119
- 38 S. Cao, L.-G. Pang, T. Luo, Y. He, G.-Y. Qin, and X.-N. Wang, *Nucl. Part. Phys. Proc.*, **289-290**: 217 (2017)
- 39 A. Nakamura, T. Saito, and S. Sakai, *Phys. Rev. D*, **69**: 014506 (2004), arXiv:hep-lat/0311024
- 40 A. Adare, et al (PHENIX), *Phys. Rev. Lett.*, **101**: 232301 (2008), arXiv:0801.4020
- 41 A. Adare, et al (PHENIX), *Phys. Rev. C*, **87**: 034911 (2013), arXiv:1208.2254
- 42 B. Abelev, et al (ALICE), *Phys. Lett. B*, **720**: 52 (2013), arXiv:1208.2711
- 43 G. Aad, et al (ATLAS), *Phys. Lett. B*, **707**: 330 (2012), arXiv:1108.6018
- 44 S. Chatrchyan, et al (CMS), *Phys. Rev. Lett.*, **109**: 022301 (2012), arXiv:1204.1850
- 45 B. Abelev, et al (ALICE), *Phys. Lett. B*, **719**: 18 (2013), arXiv:1205.5761
- 46 A. M. Sirunyan, et al (CMS), *Phys. Rev. Lett.*, **120**: 202301 (2018), arXiv:1708.03497
- 47 A. M. Sirunyan, et al (CMS), *Phys. Lett. B*, **782**: 474 (2018), arXiv:1708.04962
- 48 B. I. Abelev, et al (STAR), *Phys. Rev. C*, **80**: 044905 (2009), arXiv:0907.2721
- 49 G. Aad, et al (ATLAS), *JHEP*, **09**: 050 (2015), arXiv:1504.04337
- 50 S. Chatrchyan, et al (CMS), *Eur. Phys. J. C*, **72**: 1945 (2012), arXiv:1202.2554
- 51 A. Beraudo, et al, *Nucl. Phys. A*, **979**: 21 (2018), arXiv:1803.03824
- 52 A. Adare, et al (PHENIX), *Phys. Rev. C*, **84**: 044905 (2011), arXiv:1005.1627
- 53 B. I. Abelev et al. (STAR), *Phys. Rev. Lett.* 98, 192301 (2007), [Erratum: *Phys. Rev. Lett.* 106, 159902(2011)], nucl-ex/0607012.
- 54 B. Abelev, et al (ALICE), *JHEP*, **09**: 112 (2012), arXiv:1203.2160
- 55 B. B. Abelev, et al (ALICE), *Phys. Rev. C*, **90**: 034904 (2014), arXiv:1405.2001
- 56 J. Adam, et al (ALICE), *Phys. Lett. B*, **771**: 467 (2017), arXiv:1609.07104
- 57 J. Adam, et al (ALICE), *JHEP*, **09**: 028 (2016), arXiv:1606.00321
- 58 B. Abelev, et al (ALICE), *Phys. Rev. Lett.*, **109**: 112301 (2012), arXiv:1205.6443
- 59 CMS Collaboration (CMS), CMS-PAS-HIN-15-005 (2015).
- 60 A. M. Sirunyan, et al (CMS), *Phys. Rev. Lett.*, **119**: 152301 (2017), arXiv:1705.04727
- 61 S. Acharya, et al (ALICE), *Phys. Lett. B*, **788**: 166 (2019), arXiv:1805.04399
- 62 ATLAS Collaboration (ATLAS), ATLAS-CONF-2018-007 (2018).
- 63 A. M. Sirunyan, et al (CMS), *JHEP*, **10**: 138 (2018), arXiv:1809.00201
- 64 L. Adamczyk, et al (STAR), *Phys. Rev. Lett.*, **118**: 212301 (2017), arXiv:1701.06060
- 65 L. Adamczyk, et al (STAR), *Phys. Rev. Lett.*, **113**: 142301 (2014), arXiv:1404.6185
- 66 M. R. Lomnitz (STAR), *EPJ Web Conf.*, **164**: 07037 (2017)
- 67 K. M. Burke, et al (JET), *Phys. Rev. C*, **90**: 014909 (2014), arXiv:1312.5003
- 68 J. Xu, A. Buzzatti, and M. Gyulassy, *JHEP*, **08**: 063 (2014), arXiv:1402.2956
- 69 P. Danielewicz and M. Gyulassy, *Phys. Rev. D*, **31**: 53 (1985)
- 70 T. Hirano and M. Gyulassy, *Nucl. Phys. A*, **769**: 71 (2006), arXiv:nucl-th/0506049
- 71 A. Majumder, B. Muller, and X.-N. Wang, *Phys. Rev. Lett.*, **99**: 192301 (2007), arXiv:hep-ph/0703082
- 72 M. H. Thoma and M. Gyulassy, *Nucl. Phys. B*, **351**: 491 (1991)
- 73 J. D. Bjorken, FERMILAB-PUB-82-059-THY (1982).
- 74 S. Peigne and A. Peshier, *Phys. Rev. D*, **77**: 114017 (2008), arXiv:0802.4364
- 75 M. Djordjevic and U. W. Heinz, *Phys. Rev. Lett.*, **101**: 022302 (2008), arXiv:0802.1230
- 76 J. Liao and E. Shuryak, *Phys. Rev. C*, **75**: 054907 (2007), arXiv:hep-ph/0611131
- 77 J. Liao and E. Shuryak, *Phys. Rev. C*, **77**: 064905 (2008), arXiv:0706.4465
- 78 J. Liao and E. Shuryak, *Phys. Rev. Lett.*, **101**: 162302 (2008), arXiv:0804.0255
- 79 J. Liao and E. Shuryak, *Phys. Rev. Lett.*, **102**: 202302 (2009), arXiv:0810.4116
- 80 J. Liao and E. Shuryak, *Phys. Rev. Lett.*, **109**: 152001 (2012), arXiv:1206.3989
- 81 B. G. Zakharov, *JETP Lett.*, **88**: 781 (2008), arXiv:0811.0445
- 82 L. Randall, R. Rattazzi, and E. V. Shuryak, *Phys. Rev. D*, **59**: 035005 (1999), arXiv:hep-ph/9803258
- 83 R. Baier, A. H. Mueller, and D. Schiff, *Phys. Lett. B*, **649**: 147 (2007), arXiv:nucl-th/0612068
- 84 H. Song and U. W. Heinz, *Phys. Rev. C*, **78**: 024902 (2008), arXiv:0805.1756
- 85 T. Renk, H. Holopainen, U. Heinz, and C. Shen, *Phys. Rev. C*, **83**: 014910 (2011), arXiv:1010.1635
- 86 H. Song, S. A. Bass, U. Heinz, T. Hirano, and C. Shen, *Phys. Rev. Lett.* 106, 192301 (2011), [Erratum: *Phys. Rev. Lett.* 109, 139904(2012)], 1011.2783.
- 87 A. Majumder and C. Shen, *Phys. Rev. Lett.*, **109**: 202301 (2012), arXiv:1103.0809
- 88 Z. Qiu, C. Shen, and U. Heinz, *Phys. Lett. B*, **707**: 151 (2012), arXiv:1110.3033
- 89 C. Shen, U. Heinz, P. Huovinen, and H. Song, *Phys. Rev. C*, **84**: 044903 (2011), arXiv:1105.3226
- 90 C. Shen and U. Heinz, *Phys. Rev. C* 85, 054902 (2012), [Erratum: *Phys. Rev. C* 86, 049903(2012)], 1202.6620.
- 91 A. Peshier, arXiv: hep-ph/0601119 (2006), hep-ph/0601119.
- 92 Y. Hidaka and R. D. Pisarski, *Phys. Rev. D*, **78**: 071501 (2008), arXiv:0803.0453
- 93 Y. Hidaka and R. D. Pisarski, *Phys. Rev. D*, **81**: 076002 (2010), arXiv:0912.0940
- 94 A. Dumitru, Y. Guo, Y. Hidaka, C. P. K. Altes, and R. D. Pisarski, *Phys. Rev. D*, **83**: 034022 (2011), arXiv:1011.3820
- 95 S. Lin, R. D. Pisarski, and V. V. Skokov, *Phys. Lett. B*, **730**: 236 (2014), arXiv:1312.3340
- 96 A. Bazavov, et al, *Phys. Rev. D*, **80**: 014504 (2009), arXiv:0903.4379
- 97 S. Borsanyi, Z. Fodor, C. Hoelbling, S. D. Katz, S. Krieg, C. Ratti, and K. K. Szabo (Wuppertal-Budapest), *JHEP*, **09**: 073 (2010), arXiv:1005.3508
- 98 L. D. McLerran, *Phys. Rev. D*, **36**: 3291 (1987)
- 99 S. A. Gottlieb, W. Liu, D. Toussaint, R. L. Renken, and R. L. Sugar, *Phys. Rev. D*, **38**: 2888 (1988)
- 100 R. V. Gavai, J. Potvin, and S. Sanielevici, *Phys. Rev. D*, **40**: 2743 (1989)
- 101 S. A. Gottlieb, W. Liu, D. Toussaint, R. L. Renken, and R. L. Sugar, *Phys. Rev. Lett.*, **59**: 2247 (1987)
- 102 X.-N. Wang, private communication.
- 103 M. Cacciari, P. Nason, and R. Vogt, *Phys. Rev. Lett.*, **95**: 122001 (2005), arXiv:hep-ph/0502203
- 104 B. A. Kniehl, G. Kramer, and B. Potter, *Nucl. Phys. B*, **582**: 514 (2000), arXiv:hep-ph/0010289
- 105 C. Peterson, D. Schlatter, I. Schmitt, and P. M. Zerwas, *Phys. Rev. D*, **27**: 105 (1983)