

Scalar-fermion analytic bootstrap in 4D

Emtinan Elkhidir^{a,b} and Denis Karateev^{a,c}

^aSISSA,

Via Bonomea 265, I-34136 Trieste, Italy

^bDepartment of Physics and Astronomy, Uppsala University,

SE-751 08 Uppsala, Sweden

^cInstitute of Physics, EPFL,

CH-1015 Lausanne, Switzerland

E-mail: emtinan.osman@physics.uu.se, d.s.karateev@gmail.com

ABSTRACT: In this work we discuss an analytic bootstrap approach [1, 2] in the context of spinning 4D conformal blocks [3, 4]. As an example we study the simplest spinning case, the scalar-fermion correlator $\langle \phi \psi \phi \bar{\psi} \rangle$. We find that to every pair of primary scalar ϕ and fermion ψ correspond two infinite towers of fermionic large spin primary operators. We compute their twists and products of OPE coefficients using both s-t and u-t bootstrap equations to the leading and sub-leading orders. We find that the leading order is represented by the scalar-fermion generalized free theory and the sub-leading order is governed by the minimal twist bosonic (light scalars, currents and the energy-momentum tensor) and fermionic (light fermions and the supersymmetric current) operators present in the spectrum.

KEYWORDS: Conformal Field Theory, Nonperturbative Effects

ARXIV EPRINT: [1712.01554](https://arxiv.org/abs/1712.01554)

Contents

1	Introduction	1
2	Analytic bootstrap	3
2.1	Bootstrap equations	3
2.2	The analytic bootstrap recipe	6
3	Scalar-fermion correlator	9
3.1	Structure of the correlator	9
3.2	Analytic results	12
3.2.1	Equations: u-t-channel	12
3.2.2	Equations: s-t-channel	14
3.2.3	Summary	15
3.3	Generalized free theory	16
4	Conclusions	18
A	Ward identities	19

1 Introduction

The conformal bootstrap program [5–9]¹ has developed immensely in recent years since its revival [13]. Many theoretical results maximally exploiting conformal symmetry unveiled rigid kinematic (model independent) structure of correlators in conformal field theories (CFTs) [3, 4, 14–33] in $d \geq 3$ dimensions. Impressive numerical methods [34–62] further allowed to put constraints on dynamical (model dependent) quantities.

In parallel to numerical developments, an analytic conformal bootstrap method has been proposed [1, 2]. It allows to gain access to large-spin sector of the CFT spectrum. More precisely it was shown that for every pair of scalars ϕ_1 and ϕ_2 in the CFT spectrum with twists² τ_1 and τ_2 , there exist an infinite tower of traceless symmetric operators \mathcal{O} spanned by a non-negative integer n , whose twist has the form

$$\tau = (\tau_1 + \tau_2 + 2n) + \mathcal{O}(1/\ell). \tag{1.1}$$

These operators are often called the double-twist operators. Their OPE coefficients at the leading order reproduce the ones of generalized free theories (GFTs).³ The result (1.1) was

¹See [10–12] for modern introduction.

²See (2.1) for precise definition of twist in 4D.

³Generalized free theory, also known as mean field theory, is a very special type of CFT. It can be defined by a set of primaries called fundamental operators. All the other primaries, called composite (multi-twist)

obtained by studying the s-t bootstrap equations for the scalar 4-point function

$$\langle \phi_1 \phi_1 \phi_2 \phi_2 \rangle. \tag{1.2}$$

The analytic techniques of [1, 2] were further developed in [63–73]. The most recent progress has been made in [74, 75]. Other closely related works are [76–78] and [79–81].

The obtained CFT result can be interpreted in AdS as a system of scalar particles with large relative angular momentum ℓ . One can compute shifts of their binding energies due to gravity [82–85] and other interaction [86]. This matches nicely the sub-leading correction in (1.1) governed by the energy-momentum tensor on the CFT side.

Extending the analytic techniques to correlators with spin is crucial for studying generic CFT data. The works [87, 88] addressed correlators with two scalars and two traceless symmetric operators⁴ such as conserved currents J_μ and the energy-momentum tensor $T_{\mu\nu}$. This has allowed to prove [88] the conjectured conformal collider bounds [89]. The work [87] deals solely with 3D CFTs, whereas in [88] the authors work in $d \geq 3$ dimensions. Analytic studies of fermions also got some attention recently [90, 91].

Goal of the paper. In this work we will discuss the analytic method of [1, 2] in the context of generic spinning correlators in 4D [3, 4, 31, 32].⁵ We will follow the notation of [32]. For performing computations in practice we will develop and attach to the paper a little Mathematica [93] code “analyticBootstrap4D.m”, which should be used together with the “CFTs4D” package [32]. We mention the names of relevant functions throughout the text as [functionName].

As a demonstration in this paper we will study in detail the simplest spinning correlator in 4D, namely the scalar-fermion correlator⁶

$$\langle \phi \psi \phi \bar{\psi} \rangle. \tag{1.3}$$

We will address both s-t and u-t channels and discuss how they complement each other.⁷ To facilitate the discussion we will also study the spectrum and the OPE coefficients of the scalar-fermion GFT. We will discuss how the GFT results are related to the large-spin analytic results. We will provide details of all the computations in the attached Mathematica notebook “Example.nb”.

Outline of the paper. In section 2 we discuss in details generic spinning 4-point functions. We provide a recipe for studying them analytically and develop practical tools for performing computations in Mathematica. In section 3 we consider a demonstration of the strategy given in section 2 on the scalar-fermion 4-point function. A compact summary of

operators, are constructed out of the fundamental ones and their derivatives. We refer to the composites made out two primaries as double-twist operators. Correlation functions in GFTs are computed using Wick contractions, which is equivalent to factorizing a given n -point function into 2-point functions in all possible ways. Contrary to free theories, GFT operators do not satisfy equations of motion.

⁴In [87] the correlator $\langle J_\mu J_\nu J_\rho J_\sigma \rangle$ was also studied.

⁵Other approaches to spinning correlators applicable to 4D were used in [25, 28, 92].

⁶This correlator is not unitary (or reflection-positive in the Euclidean signature).

⁷In a similar way one could study the u-t bootstrap equation of (1.2), see [71].

the final result is given in section 3.2.3. In section 3.3 we address a scalar-fermion GFT and show how it is related to our analytic bootstrap results. We conclude in section 4. Details on the Ward identities for the scalar-fermion correlator are provided in appendix A.

2 Analytic bootstrap

We start by discussing the main ingredients of general bootstrap equations in section 2.1 preparing the ground for section 2.2, where we provide an analytic bootstrap recipe in a schematic form.

2.1 Bootstrap equations

We work in 4D Minkowski space where the conformal group is $SO(2, 4) \simeq SU(2, 2)$. The local primary operators transform in a finite-dimensional representation of the $U(1) \times SU(2) \times SU(2)$ sub-group and thus are labeled by the $U(1)$ charge (the scaling dimension) Δ and the pair of integers $(\ell, \bar{\ell})$ which describes spin.⁸ In what follows it will be more convenient to use instead of the scaling dimension another quantity called the twist defined as

$$\tau \equiv \Delta - \frac{\ell + \bar{\ell}}{2}, \quad \text{in unitary CFTs} \quad \begin{cases} \tau \geq 1, & \ell \bar{\ell} = 0, \\ \tau \geq 2, & \ell \bar{\ell} \neq 0. \end{cases} \quad (2.1)$$

The inequalities in (2.1) are the unitary bounds, they are saturated by conserved operators [94, 95]. In the $\ell \bar{\ell} = 0$ case the conserved operators are free [96]. A generic local operator is denoted by

$$\mathcal{O}_{k,\tau}^{(\ell,\bar{\ell})}(\mathbf{p}_i), \quad \mathbf{p}_i \equiv (x_i, s_i, \bar{s}_i), \quad (2.2)$$

where x is the position and s and \bar{s} are auxiliary spinors (polarizations). The additional index k is used to label degenerate operators, which arise for example in the case of global symmetries or Dirac fermions. In the remainder of this paper we drop this label for simplicity. We use a convention for naming operators (2.2) such that

$$\ell \geq \bar{\ell}. \quad (2.3)$$

Every operator (2.2) has its hermitian conjugate

$$\overline{\mathcal{O}}_{\tau}^{(\bar{\ell},\ell)}(\mathbf{p}_i) \equiv \left(\mathcal{O}_{\tau}^{(\ell,\bar{\ell})}(\mathbf{p}_i) \right)^{\dagger}. \quad (2.4)$$

A generic 4-point function of local operators has the following form when expanded in the s-channel

$$\langle \overbrace{\mathcal{O}_1(\mathbf{p}_1) \mathcal{O}_2(\mathbf{p}_2)} \overbrace{\mathcal{O}_3(\mathbf{p}_3) \mathcal{O}_4(\mathbf{p}_4)} \rangle = \sum_{\mathcal{O}} \sum_{a,b} \lambda_{\langle \mathcal{O}_1 \mathcal{O}_2 \mathcal{O} \rangle}^a \lambda_{\langle \overline{\mathcal{O}} \mathcal{O}_3 \mathcal{O}_4 \rangle}^b W_{\langle \mathcal{O}_1 \mathcal{O}_2 \mathcal{O} \rangle \langle \overline{\mathcal{O}} \mathcal{O}_3 \mathcal{O}_4 \rangle}^{ab}, \quad (2.5)$$

where λ^a are the OPE coefficients (3-point coupling constants) and W^{ab} are the conformal partial waves (CPWs) which can be written as

$$W^{ab} = \sum_I H_I^{ab}(z, \bar{z}) \mathbb{T}^I, \quad (2.6)$$

⁸Traceless symmetric operators in 4D are those with $\ell = \bar{\ell}$.

where H are conformal blocks and \mathbb{T}^I are the tensor structures of the correlator (2.5). We will refer to the operators \mathcal{O}_i in correlators as external operators and to the operator \mathcal{O} as internal (exchanged). The sum over all possible operators should be seen as a sum over all possible values of twist and spin

$$\sum_{\mathcal{O}} = \sum_{\tau} \sum_{\ell, \bar{\ell}}. \tag{2.7}$$

Any conformal block $H_I^{ab}(z, \bar{z})$ can be expressed [3] in terms of the derivatives of simpler blocks called the seed blocks and dual seed blocks. Both seed and dual seed blocks have the following form [4]

$$H_{\text{seed}}^{(p)}(z, \bar{z}) = \left(\frac{z\bar{z}}{z - \bar{z}} \right)^{2p+1} \sum_{m,n} c_{m,n} \mathcal{F}_{\rho_1 \rho_2}^{(a,b;c)}(z, \bar{z}), \quad p \equiv |\ell - \bar{\ell}|. \tag{2.8}$$

The coefficients $c_{m,n}$ are some constants [4, 32] which have the following schematic form

$$c_{m,n}^e = (-1)^\ell i^p \times \text{rationalFunction}_{m,n}(a, b; \ell, \tau). \tag{2.9}$$

An example of how the *rationalFunction* looks like can be found in appendix B in [4] for the $p = 1$ case. The functions \mathcal{F} are defined as

$$\mathcal{F}_{\rho_1 \rho_2}^{(a,b;c)}(z, \bar{z}) \equiv k_{\rho_1}^{(a,b;c)}(z) k_{\rho_2}^{(a,b;c)}(\bar{z}) - (z \leftrightarrow \bar{z}). \tag{2.10}$$

Here the parameters a and b depend on the twists of external operators, parameter c on the spin difference p defined in (2.8). The parameters ρ_1 and ρ_2 depend on twist and spin of the internal (exchanged) operator as

$$\rho_1 \equiv \frac{\tau}{2} + l + r, \quad \rho_2 \equiv \frac{\tau}{2} + s, \tag{2.11}$$

where r and s are some integer or half-integer constants. See [4] for details. The k -functions are defined as

$$k_{\rho}^{(a,b;c)}(x) \equiv x^{\rho} {}_2F_1(a + \rho, b + \rho; c + 2\rho; x). \tag{2.12}$$

For $b = c - a$ the k -functions admit the following representation as a double-infinite sum

$$k_{\rho}^{(a, c-a; c)}(1-x) = \frac{\Gamma(2\rho + c)}{\Gamma(\rho + a)\Gamma(\rho - a + c)} \sum_{m=0}^{\infty} \sum_{n=0}^{\infty} \frac{(-\rho)_m (\rho + a)_n (\rho + c - a)_n}{m! n! n!} x^{m+n} \\ \times \left(2\psi(n+1) - \psi(\rho + a + n) - \psi(\rho + c - a + n) - \ln(x) \right), \quad x \in [0, 1], \tag{2.13}$$

which simply follows from Taylor expansion around $x = 0$. The Pochhammer symbol and the digamma functions are denoted by

$$(a)_n \equiv \frac{\Gamma(a+n)}{\Gamma(a)}, \quad \psi(b) \equiv \frac{\Gamma'(b)}{\Gamma(b)} \tag{2.14}$$

respectively. Another important representation of (2.12) can be obtained in the large $\ell \gg 1$ limit and small $x \ll 1$, which reads as

$$\lim_{\ell \rightarrow \infty} \lim_{x \rightarrow 0} k_{\rho_1}^{(a,b;c)}(1-x) = \sqrt{\frac{\ell}{\pi}} 2^{2\rho_1+c} x^{-\frac{a+b-c}{2}} K_{a+b-c}(2\ell\sqrt{x}), \quad \ell^2 x \sim 1, \tag{2.15}$$

where K_α is the modified Bessel function and the parameter ρ_1 is defined in (2.11).⁹ This relation is a straightforward generalization of the results of appendix A.1.4 in [1].

For a given correlator one can write essentially 2 bootstrap equations: the s-t equation

$$\langle \overbrace{\mathcal{O}_1(\mathbf{p}_1) \mathcal{O}_2(\mathbf{p}_2)} \overbrace{\mathcal{O}_3(\mathbf{p}_3) \mathcal{O}_4(\mathbf{p}_4)} \rangle = \langle \overbrace{\mathcal{O}_1(\mathbf{p}_1) \mathcal{O}_2(\mathbf{p}_2) \mathcal{O}_3(\mathbf{p}_3)} \overbrace{\mathcal{O}_4(\mathbf{p}_4)} \rangle \quad (2.16)$$

and the u-t equation

$$\langle \overbrace{\mathcal{O}_1(\mathbf{p}_1) \mathcal{O}_2(\mathbf{p}_2) \mathcal{O}_3(\mathbf{p}_3)} \overbrace{\mathcal{O}_4(\mathbf{p}_4)} \rangle = \langle \overbrace{\mathcal{O}_1(\mathbf{p}_1) \mathcal{O}_2(\mathbf{p}_2) \mathcal{O}_4(\mathbf{p}_4)} \overbrace{\mathcal{O}_3(\mathbf{p}_3)} \rangle. \quad (2.17)$$

s-t bootstrap equation. We consider now the bootstrap equation (2.16). After decomposing it into a set of independent equations by stripping of independent tensor structures \mathbb{T}^I , all the equations get the following schematic form

$$(z\bar{z})^A \sum_{\mathcal{O}} P_{\mathcal{O}} H_{\mathcal{O}}^I(z, \bar{z}) = \left((1-z)(1-\bar{z}) \right)^A \sum_{\mathcal{O}} P'_{\mathcal{O}} H'_{\mathcal{O}}{}^I(1-z, 1-\bar{z}). \quad (2.18)$$

It can be studied in the $z, \bar{z} \in [0, 1]$ region. Here $P_{\mathcal{O}}$ and $P'_{\mathcal{O}}$ represent products of the OPE coefficients

$$P_{\mathcal{O}} \equiv \lambda_{\langle \mathcal{O}_1 \mathcal{O}_2 \mathcal{O} \rangle}^a \lambda_{\langle \bar{\mathcal{O}} \mathcal{O}_3 \mathcal{O}_4 \rangle}^b, \quad P'_{\mathcal{O}} \equiv \lambda_{\langle \mathcal{O}_3 \mathcal{O}_2 \mathcal{O} \rangle}^a \lambda_{\langle \bar{\mathcal{O}} \mathcal{O}_1 \mathcal{O}_4 \rangle}^b \quad (2.19)$$

and $H_{\mathcal{O}}^I, H'_{\mathcal{O}}{}^I$ represent the conformal blocks which can be constructed from the (dual) seed blocks (2.8) and their derivatives. The multipliers $(z\bar{z})^A$ and $\left((1-z)(1-\bar{z}) \right)^A$ come from the ratio of kinematic factors in the s- and t-channel with the exponent A which depends on twist of external operators.

u-t bootstrap equation. Equation (2.17) leads to the following set of bootstrap equations

$$\left(\frac{1}{z\bar{z}} \right)^A \sum_{\mathcal{O}} P''_{\mathcal{O}} H''_{\mathcal{O}}{}^I \left(\frac{1}{z}, \frac{1}{\bar{z}} \right) = \left((1-z)(1-\bar{z}) \right)^A \sum_{\mathcal{O}} P'_{\mathcal{O}} H'_{\mathcal{O}}{}^I(1-z, 1-\bar{z}). \quad (2.20)$$

We will study this equation in the $z, \bar{z} \in [1, +\infty]$ region. We make a change of variables from (z, \bar{z}) to $(\omega, \bar{\omega})$ defined as

$$\omega \equiv \frac{1}{z}, \quad \bar{\omega} \equiv \frac{1}{\bar{z}}, \quad \omega, \bar{\omega} \in [0, 1]. \quad (2.21)$$

Even though the hypergeometric series defining the $k(\omega)$ functions (2.12) is convergent in the $\omega \in [0, 1]$ region, the $k(\omega)$ functions is analytic in the whole complex plane modulo branch cuts [97], see figure 1. The following formula holds [98]

$$k_{\rho}^{(a,b;c)} \left(1 - \frac{1}{\omega} \right) = (-1)^{\pm\rho} (\omega)^a k_{\rho}^{(a,c-b;c)}(1-\omega). \quad (2.22)$$

The factor $(-1)^{\pm\rho}$ appears due to the choice of analytic continuation $\pm i\pi\epsilon$, namely one can choose to be right above or right below the left brunch cut, as indicated in figure 1 by arrows.

⁹Notice that (2.15) contains a factor 4^ℓ entering through the parameter ρ_1 .

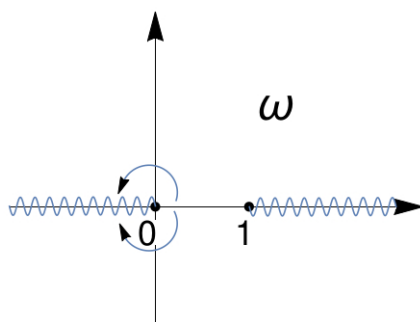


Figure 1. Complex plain w . There are two branch cuts for the k function: one is due to the hypergeometric series and another one due to the power-law behavior. By circular arrows we show 2 different ways to perform an analytic continuation from the $\omega \in [0, 1]$ to the $[-\infty, 0]$ line.

We perform an analytic continuation of the functions $k(\omega)$ and $k(\bar{\omega})$ separately choosing opposite directions. It is required when moving to Euclidean space where $\bar{\omega} = \omega^*$. As a consequence we get

$$\mathcal{F}_{\rho_1, \rho_2}^{(a, b; c)} \left(1 - \frac{1}{\omega}, 1 - \frac{1}{\bar{\omega}} \right) = (-1)^{\rho_1 - \rho_2} (\omega \bar{\omega})^a \mathcal{F}_{\rho_1, \rho_2}^{(a, c-b; c)}(1 - \omega, 1 - \bar{\omega}), \quad (2.23)$$

where according to (2.11) $\rho_1 - \rho_2$ is an integer and one has

$$(-1)^{\rho_1 - \rho_2} = \pm (-1)^\ell. \quad (2.24)$$

After these manipulations instead of equation (2.20) we can write

$$(\omega \bar{\omega})^{2A-a} \sum_{\mathcal{O}} P''_{\mathcal{O}} H''_{\mathcal{O}}{}^I(\omega, \bar{\omega}) = \left((1-\omega)(1-\bar{\omega}) \right)^A \sum_{\mathcal{O}} P'_{\mathcal{O}} (-1)^\ell H'''_{\mathcal{O}}{}^I(1-\omega, 1-\bar{\omega}). \quad (2.25)$$

Structurally it has exactly the same form as (2.18) but with an extra $(-1)^\ell$.

There is an equivalent and somewhat simpler way of dealing with the u-t bootstrap equations. One can consider a different correlation function (with positions of operators re-ordered) and to study an s-t channel

$$\langle \overbrace{\mathcal{O}_1(\mathbf{p}_1) \mathcal{O}_3(\mathbf{p}_2)} \overbrace{\mathcal{O}_2(\mathbf{p}_3) \mathcal{O}_4(\mathbf{p}_4)} \rangle = \langle \overbrace{\mathcal{O}_1(\mathbf{p}_1) \mathcal{O}_3(\mathbf{p}_2)} \overbrace{\mathcal{O}_2(\mathbf{p}_3) \mathcal{O}_4(\mathbf{p}_4)} \rangle. \quad (2.26)$$

In this case the standard s-t techniques straightforwardly apply and no analytic continuation is needed.

2.2 The analytic bootstrap recipe

In Minkowski space the variables z and \bar{z} are independent quantities. The light-cone limit is defined as¹⁰

$$z \ll 1 - \bar{z} \ll 1. \quad (2.27)$$

¹⁰In the ω -variable we will use the light-cone limit $\omega \ll 1 - \bar{\omega} \ll 1$.

We summarize here the recipe of [1] for studying analytically the bootstrap equations of the form (2.18) in the light-cone limit (2.27).

We keep the discussion at the schematic level and pretend that the conformal blocks H are simply represented by a single \mathcal{F} function (2.10) together with the $(-1)^\ell i^p$ factor coming from (2.9)¹¹

$$H(z, \bar{z}) = (-1)^\ell i^p \times \mathcal{F}_{\rho_1 \rho_2}^{(a,b;c)}(z, \bar{z}). \quad (2.28)$$

The left-hand side of (2.18) in the light-cone limit reads as¹² [KeepLeadingTerm]

$$(z\bar{z})^A \left(1 + i^p \sum_{\ell_{\min}} (-1)^{\ell_{\min}} \sum_{\tau_{\min} > 1}^2 z^{\rho_1} k_{\rho_2}^{(a,b;c)}(\bar{z}) \right), \quad A < 0. \quad (2.29)$$

The first term comes from the identity operator that may or may not be present. This depends on the correlator under consideration. The second term describes the contribution of all the rest of operators in the theory. In the $z \rightarrow 0$ limit only the lowest (minimal) twist operators contribute (light scalars or fermions with $1 < \tau \leq 2$ and conserved bosonic or fermionic operators with $\tau = 2$). We then recast the expression (2.29) into the final form by performing a series expansion around small $1 - \bar{z}$ [kFunctionExpand].¹³

The right-hand side of (2.18) will be dominated (in the light-cone limit) by the large spin operators as was argued in [1, 2].¹⁴ Using the definition (2.11) it is clear that the second term in (2.10) is negligible since it behaves as $(1 - \bar{z})^\ell$ and should be dropped using [plugSeedBlocks[0], plugDualSeedBlocks[0]]. We approximate the sum over ℓ by an integral

$$\sum_{\ell} = \int_0^\infty d\ell \mathcal{R}_\tau(\ell), \quad P_{\mathcal{O}} = P_\tau(\ell), \quad (2.30)$$

where the distribution density $\mathcal{R}_\tau(\ell)$ indicates how operators with a given twist τ contribute to the sum. The right-hand side of (2.18) is then written as¹⁵ [largeSpinExpand]

$$2^{2t+c} z^{-\frac{a+b-c}{2}} \times \sum_{\tau} (1 - \bar{z})^A 2^\tau k_{\rho_2}^{(a,b;c)}(1 - \bar{z}) \times \int_0^\infty d\ell \rho_\tau(\ell) P_\tau(\ell) (-1)^\ell i^p 4^\ell \sqrt{\frac{\ell}{\pi}} K_{a+b-c}(2\ell\sqrt{\bar{z}}). \quad (2.31)$$

In the large ℓ limit all the coefficients (2.9) simplify significantly but remain non-zero for generic parameters. They do not give any ℓ contribution apart from the $(-1)^\ell$ factor. This is the reason we can safely leave them out of the discussion in (2.28).

¹¹We thus ignore the necessity of taking a linear combination in F with different coefficients $c_{m,n}$ and taking derivatives in z and \bar{z} in general situation. We also drop the factor $\left(\frac{z\bar{z}}{z-\bar{z}}\right)^{2p+1}$ which in the limit (2.27) simply leads to $(-z)^{2p+1}$.

¹²In writing (2.29) we assume $\rho_1 < \rho_2$. Depending on parameters r and s defined in (2.11) there might be a situation when $\rho_1 > \rho_2$. The second term in (2.29) should change accordingly.

¹³The action of [kFunctionExpand] on $k(\bar{z})$ is equivalent to (2.13) for $x = 1 - \bar{z}$ and $b = c - a$.

¹⁴The poles in (2.29) for $z \rightarrow 0$ can only be reproduced by an infinite sum over large spin.

¹⁵Notice that the equation (2.31) would have not contained the factor $(-1)^\ell$ if we had started from the bootstrap equation (2.25).

In the large spin limit we expect the following behavior of the squared OPE coefficients multiplied by the density

$$\mathcal{R}_\tau(\ell) P_\tau(\ell) = 4^{-\ell} \ell^B \left(P^0 + \frac{P^1}{\ell^C} + \dots \right), \quad (2.32)$$

where the coefficients P^0 and P^1 contain the dependence on ℓ only via the factor $(-1)^\ell$ which may or may not be present. In what follows we assume $\mathcal{R}_\tau(\ell) = 1$.¹⁶ Presence of the $4^{-\ell}$ factor in (2.32) guaranties sufficiently fast decay of the OPE coefficients required by the OPE convergence [99, 100] and should cancel out the 4^ℓ factor in (2.31). The same type of ansatz was also used in [87, 88].

Using (2.32) one can then evaluate the integral in (2.31) analytically term by term [largeSpinSum] by means of

$$\int_0^\infty dl \ell^\alpha K_\beta(2\ell\sqrt{z}) = \frac{1}{4} z^{-\frac{\alpha+1}{2}} \Gamma\left(\frac{1+\alpha+\beta}{2}\right) \Gamma\left(\frac{1+\alpha-\beta}{2}\right). \quad (2.33)$$

It is clear that, if the factor $(-1)^\ell$ is present in the final expression, the integral would return zero, since contributions from even and odd spins are approximately the same and cancel each other out.

The twist has the following behavior

$$\tau = \tau^0 + \frac{\gamma}{\ell^D} + \dots, \quad (2.34)$$

where τ^0 is the leading twits and γ is the coefficient of the sub-leading correction often called the anomalous dimension. Plugging (2.34) to (2.31) one should make an expansion around τ^0 for small $\frac{\gamma}{\ell^D}$ of the expression

$$2^\tau k_{\rho_2}^{(a,b;c)}(1-\bar{z}) \approx 2^{\tau^0} k_{\frac{\tau^0}{2}+s}^{(a,b;c)}(1-\bar{z}) + \frac{\partial}{\partial \tau} \left(2^\tau k_{\frac{\tau}{2}+s}^{(a,b;c)}(1-\bar{z}) \right) \Big|_{\tau=\tau^0} \times \frac{\gamma}{\ell^D}. \quad (2.35)$$

We then recast the expression (2.31) into the final form by performing a series expansion around small $1-\bar{z}$ [kFunctionExpand]. For example at the leading order in $1-\bar{z}$ one has

$$2^{\tau^0} k_{\rho_2}^{(a,b;c)}(1-\bar{z}) \approx 2^{\tau^0} (1-\bar{z})^{s+\frac{\tau^0}{2}} \times \left(1 + \frac{\gamma}{2\ell^D} \log(4(1-\bar{z})) \right). \quad (2.36)$$

Matching the left- and right-hand side. After performing all prescribed manipulations one can equating (2.29) and (2.31) and determine the unknown coefficients in (2.32) and (2.34) by matching independently terms with equal powers

$$z^{\#_1} \times (1-\bar{z})^{\#_2} \times \log^{\#_3}(1-\bar{z}), \quad (2.37)$$

where $\#_3$ can only be 0 or 1. More precisely we start analyzing terms with $\#_3 = 0$. Matching the power $\#_1$ allows to determine the exponent B and matching the power $\#_2$ allows to determine the leading twist τ^0 . We have a series expansion in $1-\bar{z}$, to satisfy the equations order by order in $1-\bar{z}$ it is required to have an infinite tower of operators with

¹⁶This hypothesis seems to be confirmed for the 3D Ising model in [72].

the twists τ^0 which differ by $2n$, where n is a non-negative integer. We can then determine the coefficient P^0 . By studying the terms with $\#_3 = 1$ one gets access to the anomalous dimension. After extracting the coefficient γ and the exponent D , one can also compute P^1 .

In the case of bootstrap equations with no identity operator we do not get access to all the parameters, we will see an instance of this in section 3.2.2.

3 Scalar-fermion correlator

As the simplest example of spinning correlator we consider the following 4-point function

$$\langle \phi(\mathbf{p}_1) \psi(\mathbf{p}_2) \phi(\mathbf{p}_3) \bar{\psi}(\mathbf{p}_4) \rangle, \tag{3.1}$$

where ϕ is some real scalar,¹⁷ ψ and $\bar{\psi}$ are a fermion and its hermitian conjugate in the representations $(1, 0)$ and $(0, 1)$ respectively. We first study the structure of this correlator (tensor structures, decomposition into OPE coefficients and conformal blocks) providing all the necessary technical ingredients. We then apply the machinery of section 2 and study the u-t and s-t bootstrap equations. We combine the results for both channels and show how they complement each other providing a compact summary in section 3.2.3.

3.1 Structure of the correlator

The correlator (3.1) has the following structure

$$\langle \phi(\mathbf{p}_1) \psi(\mathbf{p}_2) \phi(\mathbf{p}_3) \bar{\psi}(\mathbf{p}_4) \rangle = \sum_{I=1}^2 g^I(z, \bar{z}) \mathbb{T}^I, \tag{3.2}$$

where $g^I(z, \bar{z})$ is an arbitrary function of conformally invariant variables and \mathbb{T}^I are the tensor structures defined as

$$\mathbb{T}^1 \equiv \mathcal{K}_4 \hat{\mathbb{I}}^{42}, \quad \mathbb{T}^2 \equiv \mathcal{K}_4 \hat{\mathbb{I}}_{31}^{42}, \quad \mathcal{K}_4 \equiv (x_{12}^2 x_{34}^2)^{-\frac{\tau_\phi + \tau_\psi + 1}{2}} \left(\frac{x_{13}^2}{x_{24}^2} \right)^{\frac{1 + \tau_\psi - \tau_\phi}{2}}. \tag{3.3}$$

The objects $\hat{\mathbb{I}}^{42}$ and $\hat{\mathbb{I}}_{31}^{42}$ represent the spin structure of the correlator, their explicit form is irrelevant for current discussion (see [32] for precise definitions).

We address now the s-, t- and u-channel OPE decompositions of the correlator (3.2). For brevity we will use the following names for bosonic (traceless symmetric) and fermionic operators consistent with (2.3)

$$\mathcal{O} \equiv \mathcal{O}_\tau^{(\ell, \ell)} \quad \text{and} \quad \Psi \equiv \mathcal{O}_\tau^{(\ell+1, \ell)}. \tag{3.4}$$

¹⁷The case of complex scalar is almost identical to the case of real scalar. The only difference hides in the properties of the OPE coefficients.

It is convenient to write explicitly the contribution of operators and their hermitian conjugates to the sum (2.7). The decomposition (2.5) reads then

$$\begin{aligned} \langle \overbrace{\phi(\mathbf{p}_1) \psi(\mathbf{p}_2)} \overbrace{\phi(\mathbf{p}_3) \bar{\psi}(\mathbf{p}_4)} \rangle &= \\ &= \sum_{\Psi} \left(\underbrace{\lambda_{\langle \phi \psi \Psi \rangle} \lambda_{\langle \bar{\Psi} \phi \bar{\psi} \rangle}}_{\equiv P_{\Psi \bar{\Psi}}} W_{\langle \phi \psi \Psi \rangle \langle \bar{\Psi} \phi \bar{\psi} \rangle}^{dual\ seed} + \underbrace{\lambda_{\langle \phi \psi \bar{\Psi} \rangle} \lambda_{\langle \Psi \phi \bar{\psi} \rangle}}_{\equiv P_{\bar{\Psi} \Psi}} W_{\langle \phi \psi \bar{\Psi} \rangle \langle \Psi \phi \bar{\psi} \rangle}^{seed} \right), \end{aligned} \quad (3.5)$$

$$\begin{aligned} \langle \overbrace{\phi(\mathbf{p}_1) \psi(\mathbf{p}_2)} \overbrace{\phi(\mathbf{p}_3) \bar{\psi}(\mathbf{p}_4)} \rangle &= \\ &= \sum_{\Psi} \left(\underbrace{\lambda_{\langle \phi \psi \Psi \rangle} \lambda_{\langle \bar{\Psi} \phi \bar{\psi} \rangle}}_{\equiv P_{\Psi \bar{\Psi}}} W_{\langle \phi \psi \Psi \rangle \langle \bar{\Psi} \phi \bar{\psi} \rangle}^{dual\ seed} + \underbrace{\lambda_{\langle \phi \psi \bar{\Psi} \rangle} \lambda_{\langle \Psi \phi \bar{\psi} \rangle}}_{\equiv P_{\bar{\Psi} \Psi}} W_{\langle \phi \psi \bar{\Psi} \rangle \langle \Psi \phi \bar{\psi} \rangle}^{seed} \right) \Bigg|_{\mathbf{p}_1 \leftrightarrow \mathbf{p}_3}, \end{aligned} \quad (3.6)$$

$$\begin{aligned} \langle \overbrace{\phi(\mathbf{p}_1) \psi(\mathbf{p}_2)} \overbrace{\phi(\mathbf{p}_3) \bar{\psi}(\mathbf{p}_4)} \rangle &= \\ &= \langle \phi(\mathbf{p}_1) \phi(\mathbf{p}_3) \rangle \langle \psi(\mathbf{p}_2) \bar{\psi}(\mathbf{p}_4) \rangle + \sum_{\mathcal{O}} \underbrace{\lambda_{\langle \phi \phi \mathcal{O} \rangle} \lambda_{\langle \mathcal{O} \psi \bar{\psi} \rangle}^a}_{\equiv P_{\mathcal{O}}^a} W_{\langle \phi \phi \mathcal{O} \rangle \langle \mathcal{O} \psi \bar{\psi} \rangle}^a \Bigg|_{\mathbf{p}_2 \leftrightarrow \mathbf{p}_3}. \end{aligned} \quad (3.7)$$

The labels *seed* and *dual seed* indicate that the CPWs have the simplest possible structure among the spinning blocks in 4D, see (2.8). Here we work with $p = 1$ (dual) seeds. In the last equation the CPWs W^a can be computed from the seed CPW with $p = 0$. We provide below all the relevant information on how to do it.

The products of OPE coefficients λ are generically denoted by P . The OPE coefficients λ are defined via the basis of tensor structures in a given 3-point function. We choose the following basis of structures for correlators involving Ψ and $\bar{\Psi}$

$$\langle \phi(\mathbf{p}_1) \psi(\mathbf{p}_2) \bar{\Psi}(\mathbf{p}_3) \rangle = \lambda_{\langle \phi \psi \bar{\Psi} \rangle} \mathcal{K}_3 \hat{\mathbb{I}}^{32} [\hat{\mathbb{J}}_{12}^3]^{\ell-1}, \quad (3.8)$$

$$\langle \phi(\mathbf{p}_1) \psi(\mathbf{p}_2) \Psi(\mathbf{p}_3) \rangle = \lambda_{\langle \phi \psi \Psi \rangle} \mathcal{K}_3 \hat{\mathbb{K}}_1^{23} [\hat{\mathbb{J}}_{12}^3]^{\ell-1}, \quad (3.9)$$

$$\langle \bar{\Psi}(\mathbf{p}_1) \phi(\mathbf{p}_2) \bar{\psi}(\mathbf{p}_3) \rangle = \lambda_{\langle \bar{\Psi} \phi \bar{\psi} \rangle} \mathcal{K}_3 \hat{\mathbb{K}}_2^{13} [\hat{\mathbb{J}}_{23}^1]^{\ell-1}, \quad (3.10)$$

$$\langle \Psi(\mathbf{p}_1) \phi(\mathbf{p}_2) \bar{\psi}(\mathbf{p}_3) \rangle = \lambda_{\langle \Psi \phi \bar{\psi} \rangle} \mathcal{K}_3 \hat{\mathbb{I}}^{31} [\hat{\mathbb{J}}_{23}^1]^{\ell-1} \quad (3.11)$$

and for correlators involving \mathcal{O}

$$\langle \phi(\mathbf{p}_1) \phi(\mathbf{p}_2) \mathcal{O}(\mathbf{p}_3) \rangle = \lambda_{\langle \phi \phi \mathcal{O} \rangle} \mathcal{K}_3 [\hat{\mathbb{J}}_{12}^3]^{\ell-1}, \quad (3.12)$$

$$\langle \mathcal{O}(\mathbf{p}_1) \psi(\mathbf{p}_2) \bar{\psi}(\mathbf{p}_3) \rangle = \mathcal{K}_3 [\hat{\mathbb{J}}_{23}^1]^{\ell-1} \left(\lambda_{\langle \mathcal{O} \psi \bar{\psi} \rangle}^1 \hat{\mathbb{I}}^{32} \hat{\mathbb{J}}_{23}^1 + \lambda_{\langle \mathcal{O} \psi \bar{\psi} \rangle}^2 \hat{\mathbb{I}}^{12} \hat{\mathbb{I}}^{31} \right). \quad (3.13)$$

The object \mathcal{K}_3 , $\hat{\mathbb{I}}^{ij}$, $\hat{\mathbb{J}}_{jk}^i$, $\hat{\mathbb{K}}_i^{jk}$ and $\hat{\mathbb{K}}_i^{jk}$ encode spin and scaling structure of correlators. Their explicit form is irrelevant for current discussion (see [32] for precise definitions).

The four OPE coefficients defined via (3.8)–(3.11) are not independent of each other. Using complex conjugation of the defining correlators and permuting operators one gets

the following relations¹⁸

$$\begin{cases} \lambda_{\langle\phi\psi\Psi\rangle}^* = \lambda_{\langle\bar{\Psi}\phi\bar{\psi}\rangle} \\ \lambda_{\langle\phi\psi\bar{\Psi}\rangle}^* = -\lambda_{\langle\Psi\phi\bar{\psi}\rangle} \end{cases} \implies \begin{cases} P_{\bar{\Psi}\bar{\Psi}} = |\lambda_{\langle\phi\psi\Psi\rangle}|^2 \\ P_{\bar{\Psi}\Psi} = -|\lambda_{\langle\phi\psi\bar{\Psi}\rangle}|^2. \end{cases} \quad (3.14)$$

Further constraints on the scaling dimensions and the OPE coefficients of external operators in (3.8)–(3.13) appear if operators Ψ and \mathcal{O} are conserved.

In case \mathcal{O} is conserved, the correlators (3.12), (3.13) automatically satisfy the differential conservation equations. The only further constraint comes from the Ward identities discussed in appendix A which allow to relate the OPE coefficients to normalization constant of 2-point functions. We use the normalization convention of [32]. In the case of the energy-momentum tensor T we have

$$\lambda_{\langle\phi\phi T\rangle} = -\frac{2\tau_\phi}{3\pi^2}, \quad \lambda_{\langle T\psi\bar{\psi}\rangle}^1 = \frac{2i(\tau_\psi - 1)}{3\pi^2}, \quad \lambda_{\langle T\psi\bar{\psi}\rangle}^2 = -\frac{2i}{\pi^2}. \quad (3.15)$$

In case Ψ is conserved, we deal with supersymmetric current. Conservation condition implies that in the correlators (3.8), (3.11) and in (3.9), (3.10) the twists of external operators should be related as

$$\tau_\phi = \tau_\psi \quad \mathbf{and} \quad \tau_\phi = \tau_\psi + 1 \quad (3.16)$$

respectively. This is expected in SUSY theories where scalars and fermions belong to the same multiplets. In principle we could have also used Ward identities to compute the OPE coefficients in (3.8)–(3.11) in the presence of SUSY current, but this is beyond the scope of our work.

Finally we can construct tensor structures in (3.13) from the single scalar (seed) tensor structure by means of differential operators [26]

$$\langle\mathcal{O}(\mathbf{p}_1)\psi(\mathbf{p}_2)\bar{\psi}(\mathbf{p}_3)\rangle = \left(\lambda_{\langle\mathcal{O}\psi\bar{\psi}\rangle}^1, \lambda_{\langle\mathcal{O}\psi\bar{\psi}\rangle}^2\right) \times \mathbf{M} \times \mathbf{D} \langle\mathcal{O}(\mathbf{p}_1)\phi(\mathbf{p}_2)\phi(\mathbf{p}_3)\rangle^{(\bullet)}, \quad (3.17)$$

where (\bullet) stresses that we do not deal with the full correlator but only with its kinematic part (tensor structure), the differential basis of operators \mathbf{D} and the matrix of coefficients \mathbf{M} can be chosen as follows

$$\begin{aligned} \mathbf{D} &= \left(\mathcal{D}_{-0+}^3 \cdot \bar{\mathcal{D}}_2^{-+0} \Big|_{\tau_\phi \rightarrow \tau_\psi + 1}, \quad \mathcal{D}_{++0}^2 \cdot \bar{\mathcal{D}}_3^{+0+} \Big|_{\tau_\phi \rightarrow \tau_\psi} \right), \\ \mathbf{M} &= \begin{pmatrix} 1 & 0 \\ \frac{(\tau_\mathcal{O} - 2\tau_\psi)(\tau_\mathcal{O} + 2\tau_\psi - 4)}{4\ell(\tau_\mathcal{O} + \ell - 1)} & \frac{(\tau_\psi - 1)^{-2}}{4\ell(\tau_\mathcal{O} + \ell - 1)} \end{pmatrix}. \end{aligned} \quad (3.18)$$

Using (3.18) we can compute [21] W^a in (3.7) as

$$W^a = \sum_{b=1}^2 \mathbf{M}^{ab} \mathbf{D}^b W_{\text{seed}}^{(p=0)}. \quad (3.19)$$

¹⁸Since the products of OPE coefficients form positive (negative) definite quantities one can try to study the s-t bootstrap equations numerically using standard techniques. However since s- and t- channels are not unitary (or reflection positive) one does not expect to have any bounds. This is because (as we will see later) for such configuration the correlation function has an alternating factor $(-1)^\ell$ which prevents one from constructing a positive definite functional.

3.2 Analytic results

We study the u-t and s-t bootstrap equation for the correlator (3.1). We perform their analytic analysis to the leading and sub-leading orders. The sub-leading corrections will depend on the OPE coefficients of the minimal (lowest) twist operators. Let us discuss in more details what minimal twist operator do we expect.

In the u-channel (3.7) we can exchange only traceless symmetric bosons, thus according to (2.1) the minimal twist operators can be light scalars, conserved $\ell = 1$ currents and the energy-momentum tensor. We will denote twist and spin of these operator by $\tau_{\mathcal{O}_m}$ and $\ell_{\mathcal{O}_m}$. In the s-channel (3.5) we can exchange only fermionic operators, according to (2.1) they could be light (1,0) fermions or the super-symmetric current (2,1). We will denote twist and spin of these operators by τ_{Ψ_m} and ℓ_{Ψ_m} .

We use the ansatz (2.34) and (2.32) for twists and products of OPE coefficients respectively. We report these expressions here again for convenience

$$\tau = \tau^0 + \frac{\gamma}{\ell^D} + \dots, \quad P = 4^{-\ell} \ell^B \left(P^0 + \frac{P^1}{\ell^C} + \dots \right). \quad (3.20)$$

3.2.1 Equations: u-t-channel

We equate (3.7) with (3.6) and perform a change of variables according to the prescription below (2.21). Schematically the bootstrap equation has the form (2.25) and can be studied in the light-cone limit

$$\omega \ll 1 - \bar{\omega} \ll 1. \quad (3.21)$$

Applying the procedure of section 2.2 we have found that there are two towers of large spin fermionic operators

$$\Psi : \quad X^{(\ell+1,\ell)}, \quad Y^{(\ell+1,\ell)} \quad (3.22)$$

together with their hermitian conjugates \bar{X} and \bar{Y} . We determine their twists together with the products of OPE coefficients

$$P_{X\bar{X}}, P_{\bar{X}X}, P_{Y\bar{Y}}, P_{Y\bar{Y}}. \quad (3.23)$$

To the leading order twists read as

$$\tau_{\bar{X}}^0 = \tau_\phi + \tau_\psi + 2n, \quad \tau_Y^0 = \tau_\phi + \tau_\psi + 2n + 1, \quad (3.24)$$

where n is a non-negative integer spanning the tower of operators. Both anomalous dimensions are suppressed by the spin ℓ with the exponent

$$D_{\bar{X}} = D_Y = \tau_{\mathcal{O}_m} \quad (3.25)$$

and have the following coefficients¹⁹

$$\gamma_{\bar{X}}^b = -(iP_{\mathcal{O}_m}^{a=1}) \frac{(-1)^{\ell_{\mathcal{O}_m}} f(\tau_\phi, \tau_\psi)}{(\tau_\psi + 1)_{-\frac{\tau_{\mathcal{O}_m}}{2}}}, \quad (3.26)$$

$$\gamma_Y^b = - \left(\frac{\tau_\psi - \frac{\tau_{\mathcal{O}_m}}{2} - 1}{\tau_\psi - 1} (iP_{\mathcal{O}_m}^{a=1}) - \frac{\tau_\psi - \frac{\tau_{\mathcal{O}_m}}{2}}{\tau_\psi - 1} (iP_{\mathcal{O}_m}^{a=2}) \right) \frac{(-1)^{\ell_{\mathcal{O}_m}} f(\tau_\phi, \tau_\psi + 1)}{(\tau_\psi + 1)_{-\frac{\tau_{\mathcal{O}_m}}{2}}}, \quad (3.27)$$

where we have defined

$$f(\tau_\phi, \tau_\psi) \equiv \frac{2^{\tau_{\mathcal{O}_m} + 2\ell_{\mathcal{O}_m}} \left(\frac{\tau_{\mathcal{O}_m}}{2} + \ell_{\mathcal{O}_m}\right)_{\frac{1}{2}}}{\sqrt{\pi} (\tau_\phi)_{-\frac{\tau_{\mathcal{O}_m}}{2}}} \sum_{j=0}^n \frac{(n)_j (\tau_\phi + \tau_\psi + n - 3)_j \left(\frac{\tau_{\mathcal{O}_m}}{2} + \ell_{\mathcal{O}_m} - j\right)_{2j}}{j! (\tau_\phi - 1)_j (\tau_\psi - 1)_j}. \quad (3.28)$$

We keep $a = 1$ and $a = 2$ to indicate explicitly that we deal with two OPE coefficients (not to be confused with orders in our large spin perturbation theory). The subscript b in the anomalous dimensions stays to indicate that it reproduces bosonic minimal-twist operators. The products of OPE coefficients have the following B exponents

$$B_{\bar{X}X} = \tau_\phi + \tau_\psi - \frac{1}{2}, \quad B_{Y\bar{Y}} = \tau_\phi + \tau_\psi - \frac{3}{2}. \quad (3.29)$$

The exponents $B_{\bar{X}X}$ and $B_{Y\bar{Y}}$ are sub-leading to (3.29) and thus the products of OPE coefficients governed by this exponents are zero to the order we work in. In the leading order

$$P_{\bar{X}X}^0 = -\frac{2^{-\tau_{\bar{X}}^0} g(\tau_\phi, \tau_\psi)}{(\tau_\phi + \tau_\psi + n - 3)_n}, \quad P_{Y\bar{Y}}^0 = \frac{2^{-\tau_Y^0} g(\tau_\phi, \tau_\psi) (\tau_\psi - 1 + n)}{(\tau_\phi + \tau_\psi + n - 2)_n}, \quad (3.30)$$

where we have defined

$$g(\tau_\phi, \tau_\psi) \equiv \frac{2\sqrt{\pi} (\tau_\phi - 1)_n (\tau_\psi - 1)_n}{n! \Gamma(\tau_\phi) \Gamma(\tau_\psi + 1)}. \quad (3.31)$$

Finally the sub-leading order OPE coefficients are suppressed by large spin ℓ with the exponents

$$C_{\bar{X}X} = C_{Y\bar{Y}} = \tau_{\mathcal{O}_m} \quad (3.32)$$

and the coefficients for $n = 0$ read as²⁰

$$n = 0 : \quad P_{\bar{X}X}^1{}^b = \gamma_{\bar{X}}^b h, \quad P_{Y\bar{Y}}^1{}^b = \gamma_Y^b h, \quad h \equiv \psi\left(\frac{\tau_{\mathcal{O}_m}}{2} + \ell_{\mathcal{O}_m}\right) - \psi(1) - \ln 2. \quad (3.33)$$

We would like to note, that since our blocks are normalized with the factor $(-1)^\ell$ according to (2.9), it was crucial to compensate this factor by another $(-1)^\ell$ coming from the

¹⁹In the equations below one should make a replacement $P_T^a \rightarrow c_T^{-1} P_T^a$ for the energy-momentum tensor, where $c_T > 0$ is a real number which appears in the $\langle TT \rangle$ normalization. This happens because of the following. The normalization of 2-point functions is fixed only up to a positive real constant. In general we use this freedom to set the constant to 1. In the case of conserved operators we do not have such a freedom since the normalization of 2-point functions is completely fixed by the algebra they obey. To correct for this the above replacement is required.

²⁰We have also found expression for $n \neq 0$, however their form is not presentable in the paper. We refer the reader to the accompanying code for details.

analytic continuation (2.24) to reproduce the identity operator in our bootstrap equations. Alternatively we could have worked with the s-t equations of another correlator

$$\langle \phi(\mathbf{p}_1) \phi(\mathbf{p}_2) \psi(\mathbf{p}_3) \bar{\psi}(\mathbf{p}_4) \rangle \tag{3.34}$$

as discussed around (2.26). In this case no analytic continuation is needed, however the products of OPE coefficients P will neatly organize themselves into positive (negative) definite quantities like in (3.14) times a factor $(-1)^\ell$. Which means that the final equations will never have a $(-1)^\ell$ factor. This will allow to reproduce the identity operator correctly.

3.2.2 Equations: s-t-channel

The s-t bootstrap equation is formed by equating the expression (3.5) with (3.6). Schematically it has the form (2.18) and can be studied in the light-cone limit (2.27).

Applying the procedure of section 2.2, we have found that there are again two towers of large spin fermionic operators

$$\Psi : X'^{(\ell+1, \ell)}, Y'^{(\ell+1, \ell)} \tag{3.35}$$

together with their hermitian conjugates \bar{X}' and \bar{Y}' . The operators (3.35) are in principle different from (3.22), we put a prime to indicate that. As before we determine their twists together with products of OPE coefficients

$$P_{X'\bar{X}'}, P_{\bar{X}'X'}, P_{Y'\bar{Y}'}, P_{\bar{Y}'Y'}. \tag{3.36}$$

In the leading order the twists read as

$$\tau_{\bar{X}'}^0 = \tau_\phi + \tau_\psi + 2n, \quad \tau_{Y'}^0 = \tau_\phi + \tau_\psi + 2n + 1, \tag{3.37}$$

where n is a non-negative integer spanning the tower of operators.

The coefficients $P_{\bar{X}'X'}^0$ and $P_{Y'\bar{Y}'}^0$ cannot contain a $(-1)^\ell$ factor in order to reproduce correctly the absence of identity operator. We cannot however put further constraints on them, they are left undetermined. As a consequence the exponents $B_{\bar{X}'X'}$ and $B_{Y'\bar{Y}'}$ are also left undetermined.

The anomalous dimensions are suppressed by large ℓ with exponents D . Since the exponents B are unknown we can only compute the differences

$$B_{\bar{X}'X'} - D_{\bar{X}'} = \left(\tau_\phi + \tau_\psi - \frac{1}{2} \right) - \tau_{\Psi_m}, \quad B_{Y'\bar{Y}'} - D_{Y'} = \left(\tau_\phi + \tau_\psi - \frac{3}{2} \right) - \tau_{\Psi_m}. \tag{3.38}$$

The coefficients of anomalous dimensions are given in terms of unknown P^0 as²¹

$$n = 0 : \quad \gamma_{\bar{X}'}^f = (-1)^{\ell+1} \times \frac{P_{\bar{\Psi}_m \Psi_m}}{P_{\bar{X}'X'}^0} \times \frac{\tilde{f}(\tau_\phi, \tau_\psi)}{\Gamma\left(\frac{1}{2}(\tau_\phi + \tau_\psi - \tau_{\Psi_m} + 1)\right)^2}, \tag{3.39}$$

$$n = 0 : \quad \gamma_{Y'}^f = (-1)^{\ell+1} \times \frac{P_{\Psi_m \bar{\Psi}_m}}{P_{Y'\bar{Y}'}^0} \times \frac{\tilde{f}(\tau_\phi, \tau_\psi + 1)}{\Gamma\left(\frac{1}{2}(\tau_\phi + \tau_\psi - \tau_{\Psi_m})\right)^2}, \tag{3.40}$$

²¹We have computed also the values for $n \neq 0$, but we decided not to present them in the paper.

where we have defined

$$\tilde{f}(\tau_\phi, \tau_\psi) \equiv \frac{2^{2-\tau_\phi-\tau_\psi} \sqrt{\pi} (-1)^{\ell_{\Psi_m}} \Gamma(1 + 2\ell_{\Psi_m} + \tau_{\Psi_m})}{\Gamma(\frac{1}{2}(\tau_\phi - \tau_\psi + \tau_{\Psi_m} + 2\ell_{\Psi_m} + 1)) \Gamma(\frac{1}{2}(-\tau_\phi + \tau_\psi + \tau_{\Psi_m} + 2\ell_{\Psi_m} + 1))}. \quad (3.41)$$

The sub-leading corrections to products of OPE coefficients are suppressed by the large spin ℓ with exponents C . Again, we can only determine the differences

$$B_{\bar{X}'X'} - C_{\bar{X}'X'} = \left(\tau_\phi + \tau_\psi - \frac{1}{2}\right) - \tau_{\Psi_m}, \quad B_{Y'\bar{Y}'} - C_{Y'\bar{Y}'} = \left(\tau_\phi + \tau_\psi - \frac{3}{2}\right) - \tau_{\Psi_m}. \quad (3.42)$$

The coefficients P^1 are then given by

$$n = 0: \quad P_{\bar{X}'X'}^{1f} = \frac{1}{2} \gamma_{\bar{X}'}^f P_{\bar{X}'X'}^0 \tilde{h}(\tau_\phi, \tau_\psi), \quad P_{Y'\bar{Y}'}^{1f} = \frac{1}{2} \gamma_{Y'\bar{Y}'}^f P_{Y'\bar{Y}'}^0 \tilde{h}(\tau_\phi, \tau_\psi + 1), \quad (3.43)$$

where we have defined

$$\tilde{h}(\tau_\phi, \tau_\psi) \equiv -2\psi(1) - \ln 4 + \psi\left(\frac{\tau_\phi - \tau_\psi + \tau_{\Psi_m} + 1}{2} + \ell_{\Psi_m}\right) + \psi\left(\frac{-\tau_\phi + \tau_\psi + \tau_{\Psi_m} + 1}{2} + \ell_{\Psi_m}\right). \quad (3.44)$$

3.2.3 Summary

In previous sections we found that to satisfy the bootstrap equations in the u-t channel and in the s-t channel we are required to have operators (X, Y) and (X', Y') respectively. They look very similar: their leading twists (3.24) and (3.37) are identical and the structure of exponents (3.25), (3.29), (3.32) and (3.38), (3.42) is strikingly similar. It is thus tempting to identify the pair (X, Y) with (X', Y') .

Under the assumption that the identity operator in the u-t channel is fully reproduced only by the operators (X, Y) we can argue as follows. Since the operators (X', Y') cannot contribute to the u-channel one is forced to set $P_{\bar{X}'X'}^0 = P_{Y'\bar{Y}'}^0 = 0$, because these coefficients do not have a $(-1)^\ell$ factor as was argued below (3.41) and would give a non-zero contribution otherwise. However this requirement is inconsistent with the coefficients of anomalous dimensions (3.39), (3.40) which would immediately blow up. Thus we conclude that $(X, Y) = (X', Y')$.

We can then neatly combine the results of sections 3.2.1 and 3.2.2 as follows. The twists of large spin fermionic operators read as

$$\tau_X = \tau_{\bar{X}} = (\tau_\phi + \tau_\psi + 2n) + \frac{\gamma_{\bar{X}}^b}{\ell^{\tau_{\mathcal{O}_m}}} + \frac{\gamma_{\bar{X}}^f}{\ell^{\tau_{\Psi_m}}}, \quad (3.45)$$

$$\tau_Y = \tau_{\bar{Y}} = (\tau_\phi + \tau_\psi + 2n + 1) + \frac{\gamma_{\bar{Y}}^b}{\ell^{\tau_{\mathcal{O}_m}}} + \frac{\gamma_{\bar{Y}}^f}{\ell^{\tau_{\Psi_m}}}, \quad (3.46)$$

where the coefficients of anomalous dimensions γ^b are given in (3.26), (3.27) and γ^f are given in (3.39), (3.40). The OPE coefficients have the following form

$$P_{\bar{X}X} = 4^{-\ell} \ell^{\tau_\phi + \tau_\psi - \frac{1}{2}} \left(P_{\bar{X}X}^0 + \frac{P_{\bar{X}X}^{1b}}{\ell^{\tau_{\mathcal{O}_m}}} + \frac{P_{\bar{X}X}^{1f}}{\ell^{\tau_{\Psi_m}}} \right), \quad (3.47)$$

$$P_{Y\bar{Y}} = 4^{-\ell} \ell^{\tau_\phi + \tau_\psi - \frac{3}{2}} \left(P_{Y\bar{Y}}^0 + \frac{P_{Y\bar{Y}}^{1b}}{\ell^{\tau_{\mathcal{O}_m}}} + \frac{P_{Y\bar{Y}}^{1f}}{\ell^{\tau_{\Psi_m}}} \right), \quad (3.48)$$

where $P_{\overline{X}X}^0$ and $P_{\overline{Y}Y}^0$ are given in (3.30), $P_{\overline{X}X}^{1b}$ and $P_{\overline{Y}Y}^{1b}$ are given in (3.33), $P_{\overline{X}X}^{1f}$ and $P_{\overline{Y}Y}^{1f}$ are given in (3.43) and

$$P_{\overline{X}X} = P_{\overline{Y}Y} = 0 \tag{3.49}$$

to the same order of expansion.

Looking at the final result (3.45)–(3.48) one notices that all the “fermionic” quantities (labeled by a superscript f) contain a factor $(-1)^\ell$ and thus their contribution to the u-t bootstrap equation completely vanishes, while all the “bosonic” quantities (labeled by a superscript b) do not have a $(-1)^\ell$ factor and thus their contribution completely vanishes in the s-t equation.

3.3 Generalized free theory

Here we consider a GFT with two primary fundamental fields: a real scalar ϕ and a fermion ψ . See footnote 3 for the definition of GFTs. All the double-twist composite primary operators $\Psi^{(\ell, \bar{\ell})}$ ²² are constructed from ϕ , ψ and their derivatives. We will not need their precise expressions and instead are interested only in their schematic form. For that consider a 3-point function

$$\langle \phi(\mathbf{p}_1) \psi(\mathbf{p}_2) \Psi^{(\ell, \bar{\ell})}(\mathbf{p}_3) \rangle. \tag{3.50}$$

It can be computed using Wick contractions and give a non vanishing result only if the operators $\Psi^{(\ell, \bar{\ell})}$ are of the following two types

$$\overline{\mathcal{X}}^{(\ell, \ell+1)}(\mathbf{p}_3) = \left(s_3 \sigma \partial \bar{s}_3 \right)^\ell [\partial^2]^n \phi(x_3) \left(\bar{s}_3^{\dot{\alpha}} \bar{\psi}_{\dot{\alpha}}(x_3) \right), \tag{3.51}$$

$$\mathcal{Y}^{(\ell+1, \ell)}(\mathbf{p}_3) = \left(s_3 \sigma \partial \bar{s}_3 \right)^\ell [\partial^2]^n \phi(x_3) \left(s_3^\alpha \sigma_{\alpha\dot{\beta}}^\mu \partial_\mu \bar{\psi}^{\dot{\beta}}(x_3) \right). \tag{3.52}$$

We choose the curly font for the operators $(\mathcal{X}, \mathcal{Y})$ in order to distinguish them from the operators (3.22) and (3.35). The twists of these operators are easy to read off from their schematic expressions

$$\tau_{\overline{\mathcal{X}}} = \tau_\phi + \tau_\psi + 2n, \quad \tau_{\mathcal{Y}} = \tau_\phi + \tau_\psi + 2n + 1. \tag{3.53}$$

In GFT one can also compute the 4-point function (3.2) using Wick contractions

$$\langle \phi(\mathbf{p}_1) \psi(\mathbf{p}_2) \phi(\mathbf{p}_3) \bar{\psi}(\mathbf{p}_4) \rangle = \langle \phi(\mathbf{p}_1) \phi(\mathbf{p}_3) \rangle \langle \psi(\mathbf{p}_2) \bar{\psi}(\mathbf{p}_4) \rangle = \frac{-i \hat{\mathbb{I}}^{42}}{(x_{13}^2)^{\tau_\phi} (x_{24}^2)^{\tau_\psi+1}}. \tag{3.54}$$

It is clear that in OPE of the 4-point function (3.2) only the double-twist operators (3.51) and (3.52) can be exchanged. Thus, given the explicit expression for the 4-point functions (3.54), the explicit values of twists of exchanged operators (3.53), one can use the s-, t- and u- channel expansions (3.5), (3.6) and (3.7) in conformal blocks to compute products of OPE coefficients in the GFT.

²²We have suspended here the convention (2.3) for $\Psi^{(\ell, \bar{\ell})}$ for simplicity of narration.

u-channel is the simplest case since the identity operator (the first term in (3.7)) reproduces (3.54) precisely. Thus there are no other bosonic operators in our GFT which can be exchanged in the 4-point function (3.2).

s-channel suites the best for determining the OPE coefficients of the operators (3.51) and (3.52). Equating the s-channel expansion (3.5) with (3.54) and splitting the obtained expression into independent tensor structures we get two equations of the schematic form

$$(z\bar{z})^\# \delta_1^I = \sum_{\ell=0}^{\infty} \sum_{n=0}^{\infty} f_{\ell,n}^I(z, \bar{z}), \quad (3.55)$$

where δ is the Kronecker symbol and $f_{\ell,n}^I(z, \bar{z})$ represents conformal blocks together with the OPE coefficients. Expanding these equations around $z = 0$ and $\bar{z} = 0$ and equating coefficients in front of the same powers of z and \bar{z} on both sides, one gets a system of linear equations for the coefficients $P_{\bar{x}\mathcal{X}}$ and $P_{\mathcal{Y}\bar{y}}$. Only a finite number of coefficients P contribute at each order of expansion, thus, the system is exactly solvable. We found a solution for several values of ℓ and n and guessed the generic solution, which is

$$\begin{aligned} P_{\bar{x}\mathcal{X}}^{GFT}(n, \ell) &= -\frac{(\tau_\phi - 1)_n (\tau_\psi - 1)_n}{n! (\tau_\phi + \tau_\psi + n - 3)_n} \times \\ &\quad \times \frac{(\tau_\phi)_{\ell+n} (\tau_\psi + 1)_{\ell+n}}{\ell! (\ell + 2)_n (\tau_\phi + \tau_\psi + \ell + n - 1)_n (\tau_\phi + \tau_\psi + \ell + 2n)_\ell}, \\ P_{\mathcal{Y}\bar{y}}^{GFT}(n, \ell) &= +\frac{(\tau_\phi - 1)_n (\tau_\psi - 1)_{n+1}}{n! (\tau_\phi + \tau_\psi + n - 2)_n} \times \\ &\quad \times \frac{(\tau_\phi)_{\ell+n+1} (\tau_\psi + 1)_{\ell+n}}{\ell! (\ell + 2)_{n+1} (\tau_\phi + \tau_\psi + \ell + n - 1)_{1+n} (\tau_\phi + \tau_\psi + \ell + 2n + 1)_\ell} \end{aligned} \quad (3.56)$$

together with

$$P_{\mathcal{X}\bar{x}}^{GFT}(n, \ell) = P_{\bar{y}\mathcal{Y}}^{GFT}(n, \ell) = 0. \quad (3.57)$$

Notice that signs of the above expression neatly match the signs in (3.14) providing a nice consistency check.

t-channel is very similar to the s-channel. We can equate the t-channel expansion (3.6) with (3.54), split the resulting expression in two independent tensor structures and get two equations of the schematic form

$$(z\bar{z})^\# \delta_1^I = \sum_{\ell=0}^{\infty} \sum_{n=0}^{\infty} (z\bar{z})^\# \left((1-z)(1-\bar{z}) \right)^\# \tilde{f}_{\ell,n}^I(1-z, 1-\bar{z}) \quad (3.58)$$

for the OPE coefficients. These equations are apparently very different from (3.55)²³ but are in fact equivalent. Expanding (3.55) around $z = \bar{z} = 1$ one finds a solution for the OPE coefficients which is identical to (3.56). This is another nice consistency check.

²³Modulo the obvious $z \leftrightarrow 1-z$ and $\bar{z} \leftrightarrow 1-\bar{z}$ exchange, we have a multiplier coming from the kinematic factor and we have a mixing of conformal blocks.

Connection to the analytic bootstrap. Taking the leading behavior of (3.47), (3.48) and comparing it with (3.56) one can notice that the following holds

$$4^{-\ell} \ell^{\tau_\phi + \tau_\psi - \frac{1}{2}} P_{\overline{X}X}^0 = \lim_{\ell \rightarrow \infty} P_{\overline{\mathcal{X}}\mathcal{X}}^{\text{GFT}}, \quad 4^{-\ell} \ell^{\tau_\phi + \tau_\psi - \frac{3}{2}} P_{\overline{Y}Y}^0 = \lim_{\ell \rightarrow \infty} P_{\overline{\mathcal{Y}}\mathcal{Y}}^{\text{GFT}}. \quad (3.59)$$

This happens because the equations for the GFT OPE coefficients match the bootstrap equations in the light-cone limit. More precisely, take the t -channel GFT equation (3.58) and change variables according to (2.21) and the prescription below it. This expression will then be equivalent to (2.25) in the light-cone limit (3.21). Thus both equations should have the same asymptotic solution.

4 Conclusions

In this paper we discuss the analytic bootstrap approach [1, 2] to general 4-point functions in 4D CFTs [3, 4, 31, 32]. To simplify computations in practice we develop and attach to the paper a little Mathematica code “analyticBootstrap4D.m”. We proceed by studying in detail the s-t and u-t bootstrap equations of the scalar-fermion correlator $\langle \phi \psi \phi \bar{\psi} \rangle$ and show how the results from these two channels complement each other. We find that for every pair of scalar ϕ and fermion ψ operators in the spectrum correspond two infinite towers of large spin fermionic operators. We compute their twist and products of OPE coefficients in the leading and sub-leading order (3.45)–(3.48). The sub-leading corrections are governed by the minimal-twist operators in the CFT. They can be both bosonic (light scalars, conserved currents and the energy-momentum tensor) and fermionic (light (1,0) and (0,1) fermions and the supersymmetric current). We provide details of all the computations in the attached Mathematica file “Example.nb”.

To complement the discussion we have also studied the scalar-fermion GFT. We derive closed-form expression for the GFT data (3.53) and (3.56). We show that in the large spin limit the GFT data perfectly matches the leading twist and OPE coefficients obtained using the analytic bootstrap.

In the same way of this paper one can study other spinning correlators. To complement numerical bootstrap studies in future it might be interesting to consider correlators of the form $\langle \bar{\psi} \psi \bar{\psi} \psi \rangle$ and $\langle JJJJ \rangle$, where J is the conserved current. One can also study $\langle \phi \mathcal{J} \bar{\mathcal{J}} \phi \rangle$, where \mathcal{J} is (2,1) fermion (spin 3/2 fermion). In case \mathcal{J} is conserved, analogously to [87, 88] one can access the supersymmetric conformal collider bounds.

The results of section 3 can be interpreted in the context of AdS. One can say that the double-twist operators X and Y on the CFT side are dual to a system of largely separated scalar and fermion particle orbiting each other with the large relative angular momentum ℓ .²⁴ The anomalous dimensions of operators X and Y would then correspond in AdS to energy shifts of the original system caused by interactions between orbiting particles. For our system we have two types of such interactions bosonic attractive/repulsive forces (gravity, Higgs-like force) or fermionic interactions which cause swapping of orbiting particles. It would be interesting to compute the energy shifts due to these interactions in

²⁴This system will also have two states $\ell \otimes \frac{1}{2} = (\ell - \frac{1}{2}) \oplus (\ell + \frac{1}{2})$. Here we use half-integer values to label representations. It is different from the rest of the paper where we use only integer values.

AdS [82, 86]²⁵ and compare them to anomalous dimensions found in this work. Here we only notice that the anomalous dimensions induced by the energy-momentum tensor are negative. This can be easily seen by plugging (3.15) into (3.26) and (3.27), indicating that gravity in AdS between scalar and fermion particle is attractive.

Recent discovery of the Lorentizan inversion formula [74] for scalars brings analytic studies to a new level. Its generalization to spin is a matter of time. Our results might serve as a benchmark for checking future spinning inversion formula in 4D.

Acknowledgments

The authors are grateful to Marco Serone for collaboration at the initial stage of this project and for numerous discussions later on. We thank Agnese Bissi, Gabriel Cuomo, Jared Kaplan, Petr Kravchuk, Dalimil Mazac, David Meltzer, João Penedones, David Poland, David Simmons-Duffin and Matthew Walters for useful discussions. DK is supported by the Simons Foundation grant 488649 (Simons collaboration on the non-perturbative bootstrap) and by the National Centre of Competence in Research SwissMAP funded by the Swiss National Science Foundation. The research of EE is supported in part by the Knut and Alice Wallenberg Foundation under grant Dnr KAW 2015.0083.

A Ward identities

As a consequence of conformal symmetry there exist a conserved traceless symmetric spin two operator, the energy momentum tensor $T^{\mu\nu}(x)$. In radial quantization²⁶ one can form 15 special non-local operators (conserved charges) Q_ϵ [11, 12]

$$Q_\epsilon \equiv - \int |x|^3 dS^3 \hat{x}_\mu \left(\epsilon_\nu(x) T^{\mu\nu}(x) \right), \quad \hat{x}^\mu \equiv \frac{x^\mu}{|x|}, \quad \int dS^3 = 2\pi^2, \quad (\text{A.1})$$

where $\epsilon_\nu(x)$ is the Killing vector corresponding to the most general infinitesimal conformal transformation $x_\nu \rightarrow x_\nu + \epsilon_\nu(x)$ which has the form

$$\epsilon_\nu(x) \equiv a_\nu + \lambda x_\nu + \omega_{[\nu\rho]} x^\rho + \left(b_\nu x^2 - 2(b \cdot x) x_\nu \right). \quad (\text{A.2})$$

Here a_ν , λ , $\omega_{[\nu\rho]}$ and b_ν are some constants parameters associated to translations, dilatation, rotations and special conformal transformations respectively. We denote the associated conserved charges Q_ϵ by P^μ , D , $M^{\mu\rho}$ and K^μ . They form the conformal algebra and give rise to commutation relations with primary operators, see (A.14)-(A.17) in [32]. By injecting the charges Q_ϵ between two states and evaluating them using (A.1) on one side and commutation relations on another side, one arrives at Ward identities.

²⁵In doing that techniques similar to [101] might be of help.

²⁶To work with radial quantization we need to analytically continue all our operators to Euclidean signature. As a result we get an overall factor $-1 = (-i)^2$ in (A.1), see [37].

Tensor vs. spinor notation. Conserved bosonic traceless symmetric currents are naturally defined in tensor language. To make connection to operators in spinor formalism used in this work we need to provide a map between tensor and spinor notation. This map is not uniquely defined, we make the following choice

$$\mathcal{O}(x)^{\alpha_1 \dots \alpha_\ell; \dot{\beta}_1 \dots \dot{\beta}_\ell} = \overline{\sigma}_{\mu_1}^{\dot{\beta}_1 \alpha_1} \dots \overline{\sigma}_{\mu_\ell}^{\dot{\beta}_\ell \alpha_\ell} \times \mathcal{O}(x)^{\mu_1 \dots \mu_\ell}, \quad (\text{A.3})$$

where symmetrization is performed for both sets of dotted and undotted indices independently. It has the following inverse operation

$$\mathcal{O}(x)^{\mu_1 \dots \mu_\ell} \equiv \frac{(-1)^\ell}{2^\ell} \times \sigma_{\alpha_1 \dot{\beta}_1}^{\mu_1} \dots \sigma_{\alpha_\ell \dot{\beta}_\ell}^{\mu_\ell} \times \mathcal{O}(x)^{\alpha_1 \dots \alpha_\ell; \dot{\beta}_1 \dots \dot{\beta}_\ell}. \quad (\text{A.4})$$

Combined with an index-free spinor notation

$$\mathcal{O}(x)^{\alpha_1 \dots \alpha_\ell; \dot{\beta}_1 \dots \dot{\beta}_\ell} = \frac{(-1)^\ell}{\ell!^2} \prod_{i=1}^{\ell} \prod_{j=1}^{\ell} [\partial_s]^{\alpha_i} [\partial_{\bar{s}}]^{\dot{\alpha}_j} \mathcal{O}(x, s, \bar{s}), \quad (\text{A.5})$$

defined in equation (2.3) in [32], we arrive at a compact formula²⁷

$$\mathcal{O}(x)^{\mu_1 \dots \mu_\ell} \equiv \frac{1}{2^\ell \ell!^2} \prod_{i=1}^{\ell} (\partial_s \sigma^{\mu_i} \partial_{\bar{s}}) \mathcal{O}(x, s, \bar{s}). \quad (\text{A.7})$$

Using (A.7) and the definitions of conformal conserved charges (A.1) together with (A.2) one can write for example²⁸

$$D = -\frac{1}{16} \int |x|^2 dS^3 (\partial_s x \partial_{\bar{s}})^2 T(x, s, \bar{s}), \quad (\text{A.8})$$

$$P^\mu = -\frac{1}{16} \int |x|^2 dS^3 (\partial_s \sigma^\mu \partial_{\bar{s}}) (\partial_s x \partial_{\bar{s}}) T(x, s, \bar{s}). \quad (\text{A.9})$$

Applications. Consider first a scalar correlator with a traceless symmetric operator (3.12). It can be used to derive an OPE which in the leading order reads as

$$\mathcal{O}_\Delta^{(\ell, \ell)}(x, s, \bar{s}) \phi(0) = (-1)^\ell \lambda_{\langle \mathcal{O} \phi \bar{\phi} \rangle} \frac{(\bar{s} \bar{x} s)^\ell}{x^{\Delta+l}} \phi(0) + \dots \quad (\text{A.10})$$

In case $\mathcal{O}_\Delta^{(\ell, \ell)}$ is the energy-momentum tensor, the Ward identities for the charge D lead to

$$\lambda_{\langle T \phi \phi \rangle} = \lambda_{\langle \phi \phi T \rangle} = -\frac{2\Delta_\phi}{3\pi^2}, \quad (\text{A.11})$$

²⁷We have defined the following short-hand notation for derivatives in auxiliary spinors

$$[\partial_s]^\alpha \equiv \frac{\partial}{\partial s_\alpha}, \quad [\partial_{\bar{s}}]^{\dot{\alpha}} \equiv \frac{\partial}{\partial s_{\dot{\alpha}}}, \quad [\partial_s]_\alpha \equiv -\frac{\partial}{\partial s^\alpha}, \quad [\partial_{\bar{s}}]_{\dot{\alpha}} \equiv -\frac{\partial}{\partial s^{\dot{\alpha}}}. \quad (\text{A.6})$$

The extra minus signs in the above expressions are needed to define the standard raising and lowering procedure in a consistent way. We also define coordinates in spinor notations as $x_{\alpha\dot{\beta}} \equiv x_\mu \sigma_{\alpha\dot{\beta}}^\mu$ and $\bar{x}^{\dot{\alpha}\beta} \equiv x^\mu \bar{\sigma}_\mu^{\dot{\alpha}\beta}$.

²⁸Analogous expression can also be written for $M^{\mu\nu}$ and K^μ .

where we have used the commutation relation $[D, \phi(0)] = \Delta_\phi \phi(0)$. The OPE in the case of fermion correlator (3.13) reads as

$$\begin{aligned} \mathcal{O}_\Delta^{(\ell, \ell)}(x, s, \bar{s}) \psi(0, t) &= \\ &= i(-1)^\ell \frac{(\bar{s}\bar{x}s)^{\ell-1}}{x^{\Delta+l}} \times \left(\lambda_{\langle \mathcal{O}_{\psi\bar{\psi}} \rangle}^1(\bar{s}\bar{x}s) + \lambda_{\langle \mathcal{O}_{\psi\bar{\psi}} \rangle}^2(\bar{s}\bar{x}t)(s \cdot \partial_t) \right) \psi(0, t) + \dots \end{aligned} \quad (\text{A.12})$$

Analogously to the scalar case, if $\mathcal{O}_\Delta^{(\ell, \ell)}$ is the energy-momentum tensor, the charge D gives one constraint on the OPE coefficients

$$2\lambda_{\langle \mathcal{O}_{\psi\bar{\psi}} \rangle}^1 - \lambda_{\langle \mathcal{O}_{\psi\bar{\psi}} \rangle}^2 = \frac{4i\Delta_\psi}{3\pi^2}, \quad (\text{A.13})$$

where we have used $[D, \psi(0, t)] = \Delta_\psi \psi(0, t)$. One can verify that the result (3.15) obeys this constraint. To completely fix both OPE coefficients the charge D is obviously not enough and one should use other conserved charges, for example P_μ . Unfortunately its action on the leading OPE term (A.12) vanishes and one should extend the OPE to sub-leading order. We find however that working with full correlation function at this point is more straightforward. We do not report the details, but only the final result (3.15).

Open Access. This article is distributed under the terms of the Creative Commons Attribution License ([CC-BY 4.0](https://creativecommons.org/licenses/by/4.0/)), which permits any use, distribution and reproduction in any medium, provided the original author(s) and source are credited.

References

- [1] A.L. Fitzpatrick, J. Kaplan, D. Poland and D. Simmons-Duffin, *The analytic bootstrap and AdS superhorizon locality*, *JHEP* **12** (2013) 004 [[arXiv:1212.3616](https://arxiv.org/abs/1212.3616)] [[INSPIRE](#)].
- [2] Z. Komargodski and A. Zhiboedov, *Convexity and liberation at large spin*, *JHEP* **11** (2013) 140 [[arXiv:1212.4103](https://arxiv.org/abs/1212.4103)] [[INSPIRE](#)].
- [3] A. Castedo Echeverri, E. Elkhidir, D. Karateev and M. Serone, *Deconstructing conformal blocks in 4D CFT*, *JHEP* **08** (2015) 101 [[arXiv:1505.03750](https://arxiv.org/abs/1505.03750)] [[INSPIRE](#)].
- [4] A. Castedo Echeverri, E. Elkhidir, D. Karateev and M. Serone, *Seed conformal blocks in 4D CFT*, *JHEP* **02** (2016) 183 [[arXiv:1601.05325](https://arxiv.org/abs/1601.05325)] [[INSPIRE](#)].
- [5] G. Mack and A. Salam, *Finite component field representations of the conformal group*, *Annals Phys.* **53** (1969) 174 [[INSPIRE](#)].
- [6] A.M. Polyakov, *Conformal symmetry of critical fluctuations*, *JETP Lett.* **12** (1970) 381 [*Pisma Zh. Eksp. Teor. Fiz.* **12** (1970) 538] [[INSPIRE](#)].
- [7] S. Ferrara, A.F. Grillo and R. Gatto, *Tensor representations of conformal algebra and conformally covariant operator product expansion*, *Annals Phys.* **76** (1973) 161 [[INSPIRE](#)].
- [8] A.M. Polyakov, *Nonhamiltonian approach to conformal quantum field theory*, *Zh. Eksp. Teor. Fiz.* **66** (1974) 23 [*Sov. Phys. JETP* **39** (1974) 9] [[INSPIRE](#)].
- [9] G. Mack, *Duality in quantum field theory*, *Nucl. Phys.* **B 118** (1977) 445 [[INSPIRE](#)].
- [10] S. Rychkov, *EPFL lectures on conformal field theory in $D \geq 3$ dimensions*, *SpringerBriefs Phys.* (2016) [[arXiv:1601.05000](https://arxiv.org/abs/1601.05000)] [[INSPIRE](#)].

- [11] D. Simmons-Duffin, *The conformal bootstrap*, in *Proceedings, Theoretical Advanced Study Institute in Elementary Particle Physics: New Frontiers in Fields and Strings (TASI 2015)*, Boulder, CO, U.S.A., 1–26 June 2015, [World Scientific](#), Singapore (2017), pg. 1 [[arXiv:1602.07982](#)] [[INSPIRE](#)].
- [12] J. Penedones, *TASI lectures on AdS/CFT*, in *Proceedings, Theoretical Advanced Study Institute in Elementary Particle Physics: New Frontiers in Fields and Strings (TASI 2015)*, Boulder, CO, U.S.A., 1–26 June 2015, [World Scientific](#), Singapore (2017), pg. 75 [[arXiv:1608.04948](#)] [[INSPIRE](#)].
- [13] R. Rattazzi, V.S. Rychkov, E. Tonni and A. Vichi, *Bounding scalar operator dimensions in 4D CFT*, *JHEP* **12** (2008) 031 [[arXiv:0807.0004](#)] [[INSPIRE](#)].
- [14] H. Osborn and A.C. Petkou, *Implications of conformal invariance in field theories for general dimensions*, *Annals Phys.* **231** (1994) 311 [[hep-th/9307010](#)] [[INSPIRE](#)].
- [15] F.A. Dolan and H. Osborn, *Conformal four point functions and the operator product expansion*, *Nucl. Phys.* **B 599** (2001) 459 [[hep-th/0011040](#)] [[INSPIRE](#)].
- [16] F.A. Dolan and H. Osborn, *Conformal partial waves and the operator product expansion*, *Nucl. Phys.* **B 678** (2004) 491 [[hep-th/0309180](#)] [[INSPIRE](#)].
- [17] F.A. Dolan and H. Osborn, *Conformal partial waves: further mathematical results*, [arXiv:1108.6194](#) [[INSPIRE](#)].
- [18] S. Weinberg, *Six-dimensional methods for four-dimensional conformal field theories*, *Phys. Rev.* **D 82** (2010) 045031 [[arXiv:1006.3480](#)] [[INSPIRE](#)].
- [19] S. Weinberg, *Six-dimensional methods for four-dimensional conformal field theories II: irreducible fields*, *Phys. Rev.* **D 86** (2012) 085013 [[arXiv:1209.4659](#)] [[INSPIRE](#)].
- [20] M.S. Costa, J. Penedones, D. Poland and S. Rychkov, *Spinning conformal correlators*, *JHEP* **11** (2011) 071 [[arXiv:1107.3554](#)] [[INSPIRE](#)].
- [21] M.S. Costa, J. Penedones, D. Poland and S. Rychkov, *Spinning conformal blocks*, *JHEP* **11** (2011) 154 [[arXiv:1109.6321](#)] [[INSPIRE](#)].
- [22] D. Simmons-Duffin, *Projectors, shadows and conformal blocks*, *JHEP* **04** (2014) 146 [[arXiv:1204.3894](#)] [[INSPIRE](#)].
- [23] P. Kravchuk and D. Simmons-Duffin, *Counting conformal correlators*, *JHEP* **02** (2018) 096 [[arXiv:1612.08987](#)] [[INSPIRE](#)].
- [24] M. Hogervorst and S. Rychkov, *Radial coordinates for conformal blocks*, *Phys. Rev.* **D 87** (2013) 106004 [[arXiv:1303.1111](#)] [[INSPIRE](#)].
- [25] P. Kravchuk, *Casimir recursion relations for general conformal blocks*, *JHEP* **02** (2018) 011 [[arXiv:1709.05347](#)] [[INSPIRE](#)].
- [26] D. Karateev, P. Kravchuk and D. Simmons-Duffin, *Weight shifting operators and conformal blocks*, *JHEP* **02** (2018) 081 [[arXiv:1706.07813](#)] [[INSPIRE](#)].
- [27] J. Penedones, E. Trevisani and M. Yamazaki, *Recursion relations for conformal blocks*, *JHEP* **09** (2016) 070 [[arXiv:1509.00428](#)] [[INSPIRE](#)].
- [28] M.S. Costa, T. Hansen, J. Penedones and E. Trevisani, *Projectors and seed conformal blocks for traceless mixed-symmetry tensors*, *JHEP* **07** (2016) 018 [[arXiv:1603.05551](#)] [[INSPIRE](#)].
- [29] M.S. Costa, T. Hansen, J. Penedones and E. Trevisani, *Radial expansion for spinning conformal blocks*, *JHEP* **07** (2016) 057 [[arXiv:1603.05552](#)] [[INSPIRE](#)].

- [30] L. Iliesiu, F. Kos, D. Poland, S.S. Pufu, D. Simmons-Duffin and R. Yacoby, *Fermion-scalar conformal blocks*, *JHEP* **04** (2016) 074 [[arXiv:1511.01497](#)] [[INSPIRE](#)].
- [31] E. Elkhidir, D. Karateev and M. Serone, *General three-point functions in 4D CFT*, *JHEP* **01** (2015) 133 [[arXiv:1412.1796](#)] [[INSPIRE](#)].
- [32] G.F. Cuomo, D. Karateev and P. Kravchuk, *General bootstrap equations in 4D CFTs*, *JHEP* **01** (2018) 130 [[arXiv:1705.05401](#)] [[INSPIRE](#)].
- [33] A. Dymarsky, *On the four-point function of the stress-energy tensors in a CFT*, *JHEP* **10** (2015) 075 [[arXiv:1311.4546](#)] [[INSPIRE](#)].
- [34] F. Caracciolo and V.S. Rychkov, *Rigorous limits on the interaction strength in quantum field theory*, *Phys. Rev. D* **81** (2010) 085037 [[arXiv:0912.2726](#)] [[INSPIRE](#)].
- [35] V.S. Rychkov and A. Vichi, *Universal constraints on conformal operator dimensions*, *Phys. Rev. D* **80** (2009) 045006 [[arXiv:0905.2211](#)] [[INSPIRE](#)].
- [36] R. Rattazzi, S. Rychkov and A. Vichi, *Central charge bounds in 4D conformal field theory*, *Phys. Rev. D* **83** (2011) 046011 [[arXiv:1009.2725](#)] [[INSPIRE](#)].
- [37] D. Poland and D. Simmons-Duffin, *Bounds on 4D conformal and superconformal field theories*, *JHEP* **05** (2011) 017 [[arXiv:1009.2087](#)] [[INSPIRE](#)].
- [38] R. Rattazzi, S. Rychkov and A. Vichi, *Bounds in 4D conformal field theories with global symmetry*, *J. Phys. A* **44** (2011) 035402 [[arXiv:1009.5985](#)] [[INSPIRE](#)].
- [39] A. Vichi, *Improved bounds for CFT's with global symmetries*, *JHEP* **01** (2012) 162 [[arXiv:1106.4037](#)] [[INSPIRE](#)].
- [40] D. Poland, D. Simmons-Duffin and A. Vichi, *Carving out the space of 4D CFTs*, *JHEP* **05** (2012) 110 [[arXiv:1109.5176](#)] [[INSPIRE](#)].
- [41] S. Rychkov, *Conformal bootstrap in three dimensions?*, [arXiv:1111.2115](#) [[INSPIRE](#)].
- [42] S. El-Showk and M.F. Paulos, *Bootstrapping conformal field theories with the extremal functional method*, *Phys. Rev. Lett.* **111** (2013) 241601 [[arXiv:1211.2810](#)] [[INSPIRE](#)].
- [43] F. Gliozzi, *More constraining conformal bootstrap*, *Phys. Rev. Lett.* **111** (2013) 161602 [[arXiv:1307.3111](#)] [[INSPIRE](#)].
- [44] F. Kos, D. Poland and D. Simmons-Duffin, *Bootstrapping the $O(N)$ vector models*, *JHEP* **06** (2014) 091 [[arXiv:1307.6856](#)] [[INSPIRE](#)].
- [45] Y. Nakayama and T. Ohtsuki, *Approaching the conformal window of $O(n) \times O(m)$ symmetric Landau-Ginzburg models using the conformal bootstrap*, *Phys. Rev. D* **89** (2014) 126009 [[arXiv:1404.0489](#)] [[INSPIRE](#)].
- [46] F. Caracciolo, A. Castedo Echeverri, B. von Harling and M. Serone, *Bounds on OPE coefficients in 4D conformal field theories*, *JHEP* **10** (2014) 020 [[arXiv:1406.7845](#)] [[INSPIRE](#)].
- [47] Y. Nakayama and T. Ohtsuki, *Bootstrapping phase transitions in QCD and frustrated spin systems*, *Phys. Rev. D* **91** (2015) 021901 [[arXiv:1407.6195](#)] [[INSPIRE](#)].
- [48] M.F. Paulos, *JuliBootS: a hands-on guide to the conformal bootstrap*, [arXiv:1412.4127](#) [[INSPIRE](#)].
- [49] F. Kos, D. Poland, D. Simmons-Duffin and A. Vichi, *Bootstrapping the $O(N)$ archipelago*, *JHEP* **11** (2015) 106 [[arXiv:1504.07997](#)] [[INSPIRE](#)].

- [50] L. Iliesiu, F. Kos, D. Poland, S.S. Pufu, D. Simmons-Duffin and R. Yacoby, *Bootstrapping 3D fermions*, *JHEP* **03** (2016) 120 [[arXiv:1508.00012](#)] [[INSPIRE](#)].
- [51] H. Kim, P. Kravchuk and H. Ooguri, *Reflections on conformal spectra*, *JHEP* **04** (2016) 184 [[arXiv:1510.08772](#)] [[INSPIRE](#)].
- [52] S.M. Chester and S.S. Pufu, *Towards bootstrapping QED₃*, *JHEP* **08** (2016) 019 [[arXiv:1601.03476](#)] [[INSPIRE](#)].
- [53] C. Behan, *PyCFTBoot: a flexible interface for the conformal bootstrap*, *Commun. Comput. Phys.* **22** (2017) 1 [[arXiv:1602.02810](#)] [[INSPIRE](#)].
- [54] Y. Nakayama, *Bootstrap bound for conformal multi-flavor QCD on lattice*, *JHEP* **07** (2016) 038 [[arXiv:1605.04052](#)] [[INSPIRE](#)].
- [55] S. El-Showk and M.F. Paulos, *Extremal bootstrapping: go with the flow*, *JHEP* **03** (2018) 148 [[arXiv:1605.08087](#)] [[INSPIRE](#)].
- [56] S. El-Showk, M.F. Paulos, D. Poland, S. Rychkov, D. Simmons-Duffin and A. Vichi, *Solving the 3D Ising model with the conformal bootstrap*, *Phys. Rev. D* **86** (2012) 025022 [[arXiv:1203.6064](#)] [[INSPIRE](#)].
- [57] S. El-Showk, M.F. Paulos, D. Poland, S. Rychkov, D. Simmons-Duffin and A. Vichi, *Solving the 3D Ising model with the conformal bootstrap II. c-minimization and precise critical exponents*, *J. Stat. Phys.* **157** (2014) 869 [[arXiv:1403.4545](#)] [[INSPIRE](#)].
- [58] F. Kos, D. Poland and D. Simmons-Duffin, *Bootstrapping mixed correlators in the 3D Ising model*, *JHEP* **11** (2014) 109 [[arXiv:1406.4858](#)] [[INSPIRE](#)].
- [59] D. Simmons-Duffin, *A semidefinite program solver for the conformal bootstrap*, *JHEP* **06** (2015) 174 [[arXiv:1502.02033](#)] [[INSPIRE](#)].
- [60] F. Kos, D. Poland, D. Simmons-Duffin and A. Vichi, *Precision islands in the Ising and O(N) models*, *JHEP* **08** (2016) 036 [[arXiv:1603.04436](#)] [[INSPIRE](#)].
- [61] A. Dymarsky, J. Penedones, E. Trevisani and A. Vichi, *Charting the space of 3D CFTs with a continuous global symmetry*, *JHEP* **05** (2019) 098 [[arXiv:1705.04278](#)] [[INSPIRE](#)].
- [62] A. Dymarsky, F. Kos, P. Kravchuk, D. Poland and D. Simmons-Duffin, *The 3d stress-tensor bootstrap*, *JHEP* **02** (2018) 164 [[arXiv:1708.05718](#)] [[INSPIRE](#)].
- [63] A. Kaviraj, K. Sen and A. Sinha, *Analytic bootstrap at large spin*, *JHEP* **11** (2015) 083 [[arXiv:1502.01437](#)] [[INSPIRE](#)].
- [64] L.F. Alday, A. Bissi and T. Lukowski, *Large spin systematics in CFT*, *JHEP* **11** (2015) 101 [[arXiv:1502.07707](#)] [[INSPIRE](#)].
- [65] A. Kaviraj, K. Sen and A. Sinha, *Universal anomalous dimensions at large spin and large twist*, *JHEP* **07** (2015) 026 [[arXiv:1504.00772](#)] [[INSPIRE](#)].
- [66] L.F. Alday and A. Zhiboedov, *Conformal bootstrap with slightly broken higher spin symmetry*, *JHEP* **06** (2016) 091 [[arXiv:1506.04659](#)] [[INSPIRE](#)].
- [67] L.F. Alday and A. Zhiboedov, *An algebraic approach to the analytic bootstrap*, *JHEP* **04** (2017) 157 [[arXiv:1510.08091](#)] [[INSPIRE](#)].
- [68] P. Dey, A. Kaviraj and K. Sen, *More on analytic bootstrap for O(N) models*, *JHEP* **06** (2016) 136 [[arXiv:1602.04928](#)] [[INSPIRE](#)].

- [69] L.F. Alday, *Large spin perturbation theory for conformal field theories*, *Phys. Rev. Lett.* **119** (2017) 111601 [[arXiv:1611.01500](#)] [[INSPIRE](#)].
- [70] L.F. Alday, *Solving CFTs with weakly broken higher spin symmetry*, *JHEP* **10** (2017) 161 [[arXiv:1612.00696](#)] [[INSPIRE](#)].
- [71] D. Li, D. Meltzer and D. Poland, *Non-Abelian binding energies from the lightcone bootstrap*, *JHEP* **02** (2016) 149 [[arXiv:1510.07044](#)] [[INSPIRE](#)].
- [72] D. Simmons-Duffin, *The lightcone bootstrap and the spectrum of the 3d Ising CFT*, *JHEP* **03** (2017) 086 [[arXiv:1612.08471](#)] [[INSPIRE](#)].
- [73] J. Qiao and S. Rychkov, *A tauberian theorem for the conformal bootstrap*, *JHEP* **12** (2017) 119 [[arXiv:1709.00008](#)] [[INSPIRE](#)].
- [74] S. Caron-Huot, *Analyticity in spin in conformal theories*, *JHEP* **09** (2017) 078 [[arXiv:1703.00278](#)] [[INSPIRE](#)].
- [75] D. Simmons-Duffin, D. Stanford and E. Witten, *A spacetime derivation of the Lorentzian OPE inversion formula*, *JHEP* **07** (2018) 085 [[arXiv:1711.03816](#)] [[INSPIRE](#)].
- [76] M. Hogervorst, *Crossing kernels for boundary and crosscap CFTs*, [arXiv:1703.08159](#) [[INSPIRE](#)].
- [77] M. Hogervorst and B.C. van Rees, *Crossing symmetry in alpha space*, *JHEP* **11** (2017) 193 [[arXiv:1702.08471](#)] [[INSPIRE](#)].
- [78] A. Gadde, *In search of conformal theories*, [arXiv:1702.07362](#) [[INSPIRE](#)].
- [79] T. Hartman, S. Jain and S. Kundu, *Causality constraints in conformal field theory*, *JHEP* **05** (2016) 099 [[arXiv:1509.00014](#)] [[INSPIRE](#)].
- [80] T. Hartman, S. Jain and S. Kundu, *A new spin on causality constraints*, *JHEP* **10** (2016) 141 [[arXiv:1601.07904](#)] [[INSPIRE](#)].
- [81] T. Hartman, S. Kundu and A. Tajdini, *Averaged null energy condition from causality*, *JHEP* **07** (2017) 066 [[arXiv:1610.05308](#)] [[INSPIRE](#)].
- [82] A.L. Fitzpatrick, J. Kaplan and M.T. Walters, *Universality of long-distance AdS physics from the CFT bootstrap*, *JHEP* **08** (2014) 145 [[arXiv:1403.6829](#)] [[INSPIRE](#)].
- [83] L. Cornalba, M.S. Costa, J. Penedones and R. Schiappa, *Eikonal approximation in AdS/CFT: conformal partial waves and finite N four-point functions*, *Nucl. Phys. B* **767** (2007) 327 [[hep-th/0611123](#)] [[INSPIRE](#)].
- [84] L. Cornalba, M.S. Costa, J. Penedones and R. Schiappa, *Eikonal approximation in AdS/CFT: from shock waves to four-point functions*, *JHEP* **08** (2007) 019 [[hep-th/0611122](#)] [[INSPIRE](#)].
- [85] L. Cornalba, M.S. Costa and J. Penedones, *Eikonal approximation in AdS/CFT: resumming the gravitational loop expansion*, *JHEP* **09** (2007) 037 [[arXiv:0707.0120](#)] [[INSPIRE](#)].
- [86] A.L. Fitzpatrick, E. Katz, D. Poland and D. Simmons-Duffin, *Effective conformal theory and the flat-space limit of AdS*, *JHEP* **07** (2011) 023 [[arXiv:1007.2412](#)] [[INSPIRE](#)].
- [87] D. Li, D. Meltzer and D. Poland, *Conformal collider physics from the lightcone bootstrap*, *JHEP* **02** (2016) 143 [[arXiv:1511.08025](#)] [[INSPIRE](#)].
- [88] D.M. Hofman, D. Li, D. Meltzer, D. Poland and F. Rejon-Barrera, *A proof of the conformal collider bounds*, *JHEP* **06** (2016) 111 [[arXiv:1603.03771](#)] [[INSPIRE](#)].

- [89] D.M. Hofman and J. Maldacena, *Conformal collider physics: energy and charge correlations*, *JHEP* **05** (2008) 012 [[arXiv:0803.1467](#)] [[INSPIRE](#)].
- [90] M. van Loon, *The analytic bootstrap in fermionic CFTs*, *JHEP* **01** (2018) 104 [[arXiv:1711.02099](#)] [[INSPIRE](#)].
- [91] S. Giombi, V. Kirilin and E. Skvortsov, *Notes on spinning operators in fermionic CFT*, *JHEP* **05** (2017) 041 [[arXiv:1701.06997](#)] [[INSPIRE](#)].
- [92] F. Rejon-Barrera and D. Robbins, *Scalar-vector bootstrap*, *JHEP* **01** (2016) 139 [[arXiv:1508.02676](#)] [[INSPIRE](#)].
- [93] Wolfram Research Inc., *Mathematica*, version 11.0, U.S.A. (2016).
- [94] G. Mack, *All unitary ray representations of the conformal group $SU(2, 2)$ with positive energy*, *Commun. Math. Phys.* **55** (1977) 1 [[INSPIRE](#)].
- [95] S. Minwalla, *Restrictions imposed by superconformal invariance on quantum field theories*, *Adv. Theor. Math. Phys.* **2** (1998) 783 [[hep-th/9712074](#)] [[INSPIRE](#)].
- [96] S. Weinberg, *Minimal fields of canonical dimensionality are free*, *Phys. Rev.* **D 86** (2012) 105015 [[arXiv:1210.3864](#)] [[INSPIRE](#)].
- [97] J. Qiao and S. Rychkov, *Cut-touching linear functionals in the conformal bootstrap*, *JHEP* **06** (2017) 076 [[arXiv:1705.01357](#)] [[INSPIRE](#)].
- [98] A. Jeffrey and D. Zwillinger, *Table of integrals, series and products*, Academic Press, U.S.A. (2007).
- [99] D. Pappadopulo, S. Rychkov, J. Espin and R. Rattazzi, *OPE convergence in conformal field theory*, *Phys. Rev.* **D 86** (2012) 105043 [[arXiv:1208.6449](#)] [[INSPIRE](#)].
- [100] S. Rychkov and P. Yvernay, *Remarks on the convergence properties of the conformal block expansion*, *Phys. Lett.* **B 753** (2016) 682 [[arXiv:1510.08486](#)] [[INSPIRE](#)].
- [101] M.S. Costa, V. Gonçalves and J. Penedones, *Spinning AdS propagators*, *JHEP* **09** (2014) 064 [[arXiv:1404.5625](#)] [[INSPIRE](#)].